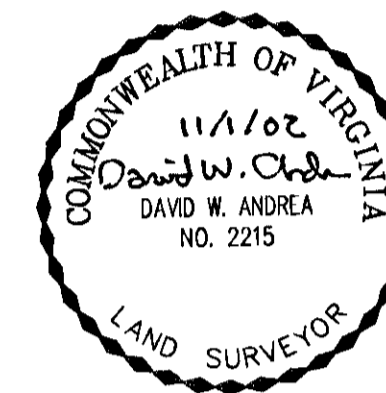


PLAT OF SUBDIVISION
THE GREENLANDS
 PHASE FOUR
 BETHEL MAGISTERIAL DISTRICT
 COUNTY OF YORK, VIRGINIA

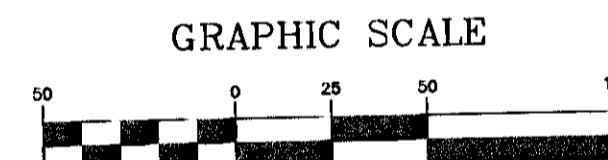
DATE: 8/15/02 SHEET 3 OF 6 SCALE: 1"=50'
 PROJECT NO: 30858.00 DRAWN BY: DWP

VHB Vanasse Hangen Brustlin, Inc.
 Transportation Land Development Environmental Services
 11832 Rock Landing Drive, Suite 203
 Newport News, Virginia 23606-4231
 (757) 873-3386 • FAX (757) 873-0757



NOW OR FORMERLY
 COVENTRY PUD
 FERGUSON GLADE
 SECTION 2E
 (P.B. 11, PG. 588-589)

TAX PARCEL NO.
 37-34-2E-LOT#



(IN FEET)
 1 inch = 50 ft.

APPROVED:
 YORK COUNTY BOARD OF SUPERVISORS

BY: Al Maddalena
 PLAT APPROVING AGENT

DATE: 2/20/2003

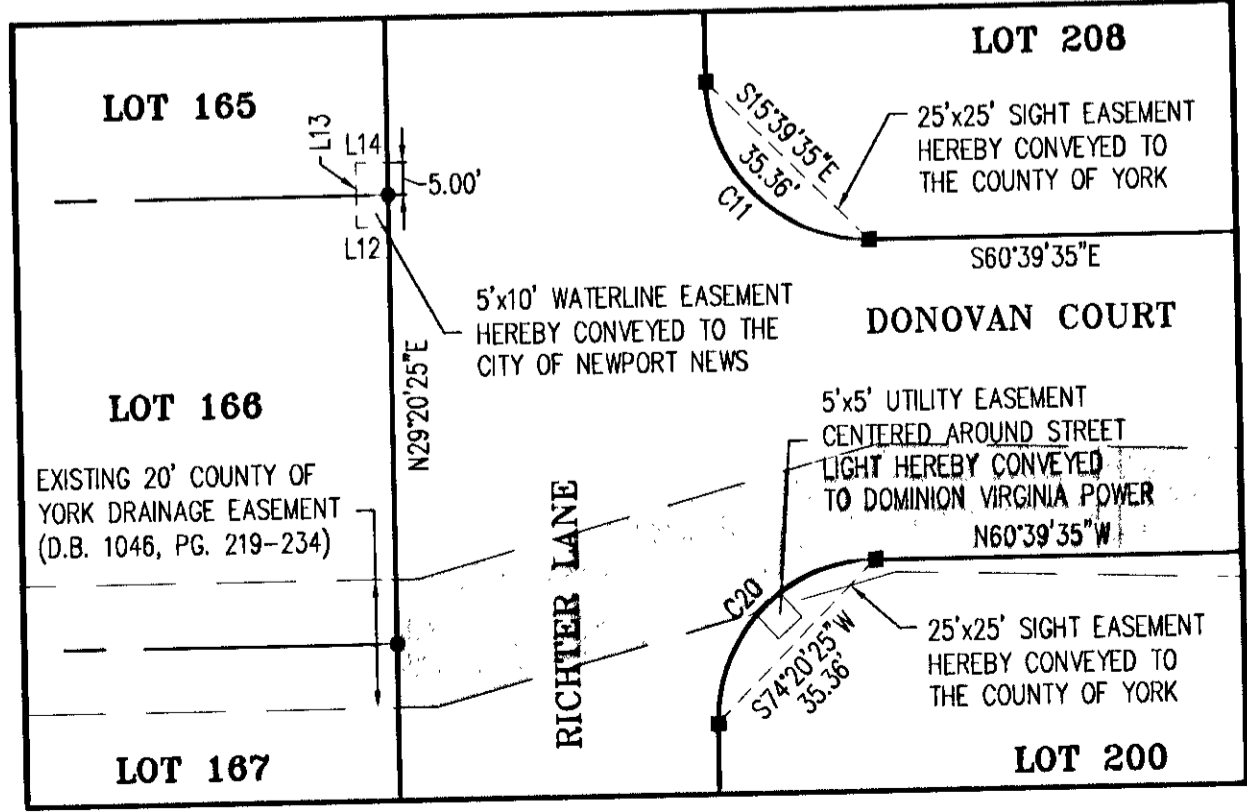
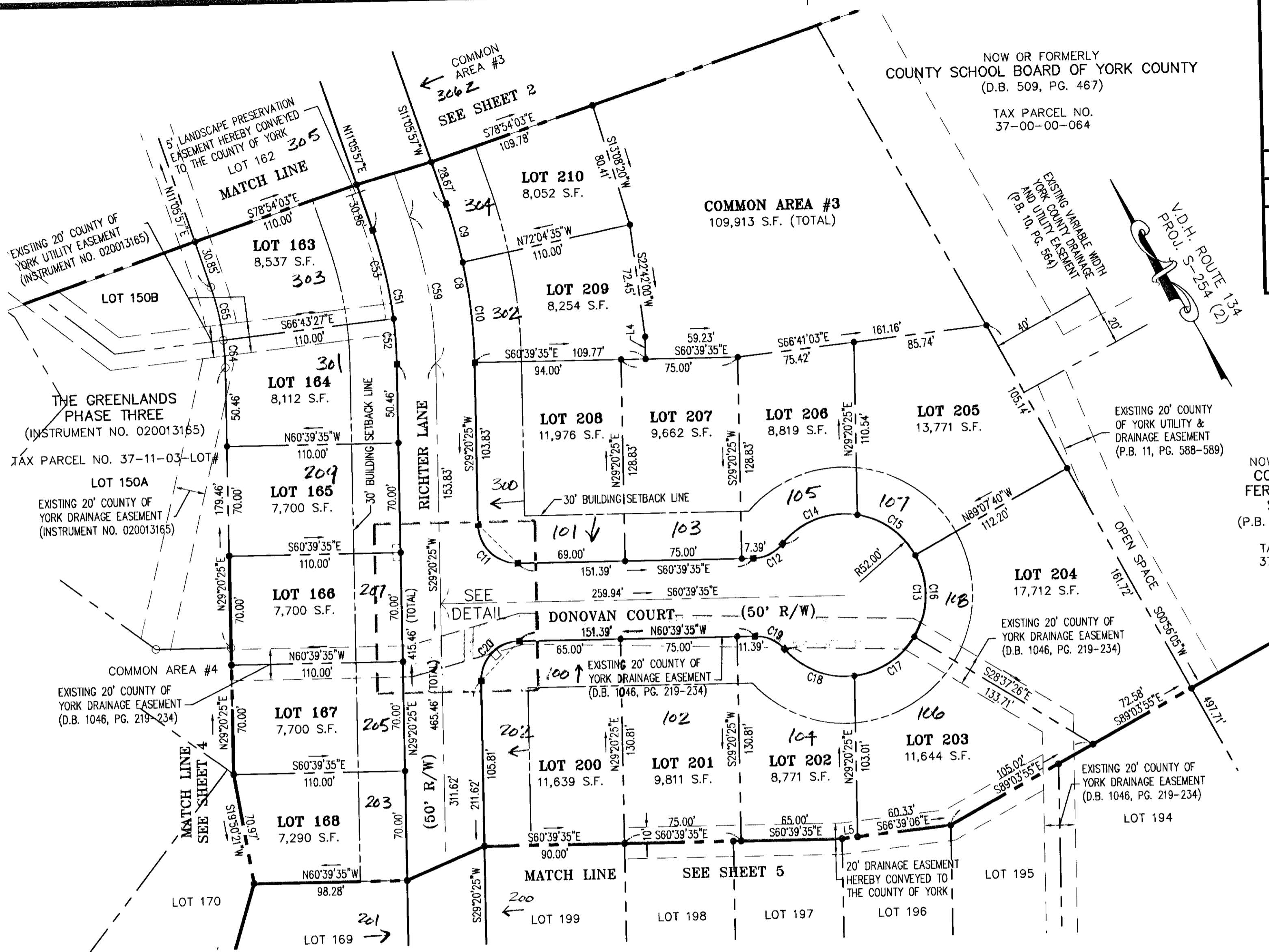
STATE OF VIRGINIA
 COUNTY OF YORK

IN THE CLERK'S OFFICE OF THE CIRCUIT COURT FOR
 THE COUNTY OF YORK, THE 7th DAY OF March, 2003
 THIS MAP WAS PRESENTED AND ADMITTED TO RECORD AS
 THE LAW DIRECTS AS INSTRUMENT NO. 03000872

TESTE: Lynn S. Jenkins
 CLERK

BY: Josi Brogan, D.C.

FILE # 30858-4-PLA



DETAIL
 SCALE 1"=30'

LEGEND

- INDICATES IRON ROD FOUND
- INDICATES IRON ROD TO BE SET
- INDICATES V.D.H. CONC. MON. FOUND
- INDICATES CONC. MON. TO BE SET
- - - - - INDICATES APPROXIMATE TOP OF BANK
- - - - - INDICATES APPROXIMATE EDGE OF WATER
- INDICATES EXISTING 20' COUNTY OF YORK DRAINAGE EASEMENT (D.B. 1046, PG. 219-234) HEREBY VACATED.

NOTE:
 SEE SHEET SIX FOR LINE AND CURVE DATA TABLES.