

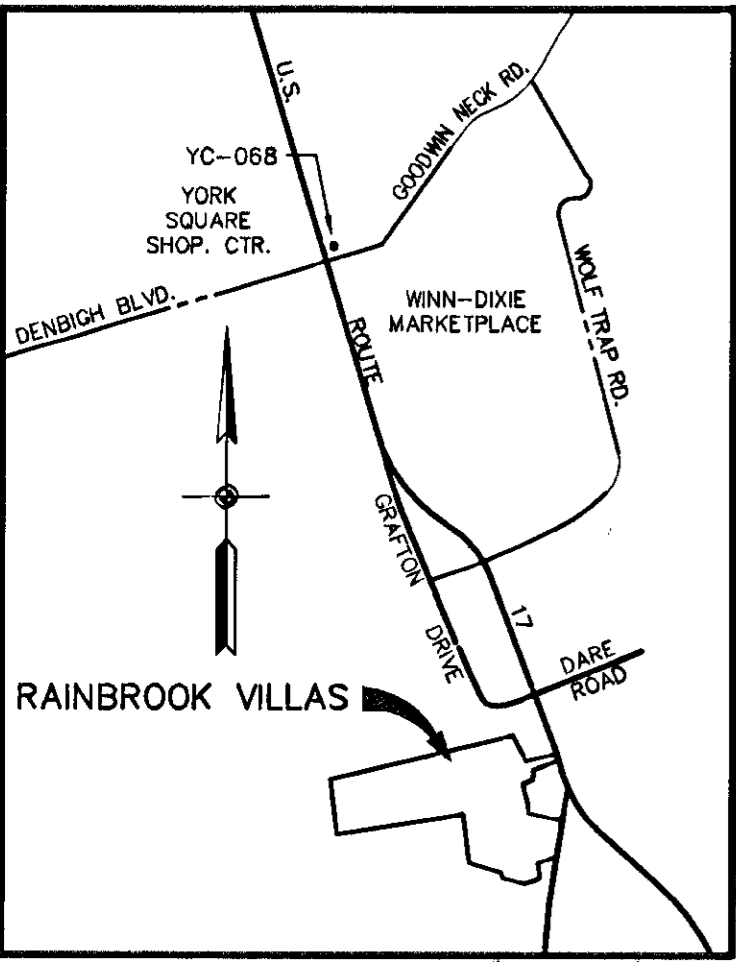
EXHIBIT "C"
PLAT OF
RAINBROOK VILLAS
A CONDOMINIUM
PHASE XIX (INSTR.#020005988)
SHEET 1 OF 5

GRAFTON DISTRICT - COUNTY OF YORK, VIRGINIA
 SCALE: 1" = 100' MARCH 27, 2003
 0 50 100 200 300 400 FEET
 GRAPHIC SCALE

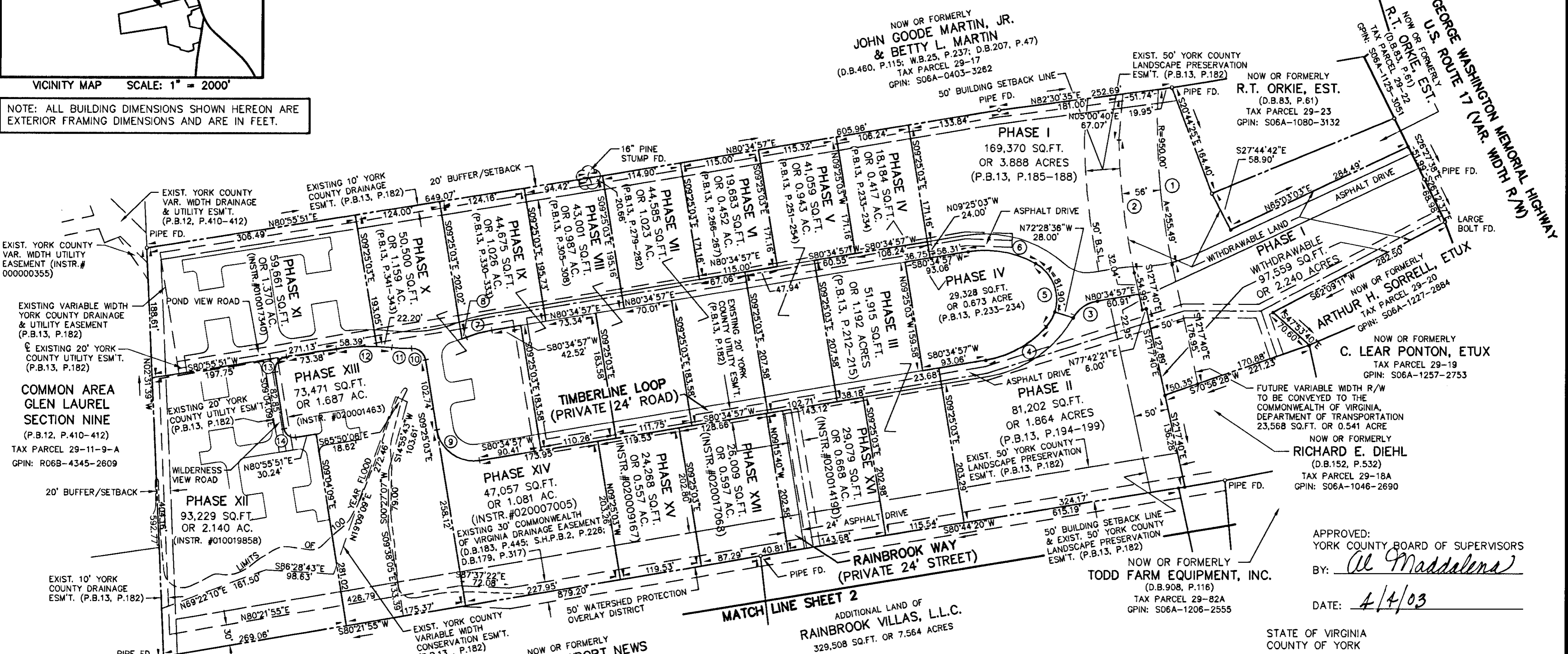
THE SIRINE GROUP, LTD.
 SURVEYORS • ENGINEERS • PLANNERS
 4794 GEORGE WASHINGTON MEMORIAL HIGHWAY
 U.S. ROUTE 17
 P.O. BOX 450
 WHITE MARSH, VIRGINIA 23183

NOTE: PROPERTY LIES IN ZONE X, WHITE, (AREAS DETERMINED TO BE OUTSIDE 500-YEAR FLOOD PLAIN), AS SHOWN ON FLOOD INSURANCE RATE MAP FOR YORK COUNTY, VIRGINIA, COMM. NO. 510182 0036B, 12/16/88 AND COMM. NO. 510182 0037B, 12/16/88.

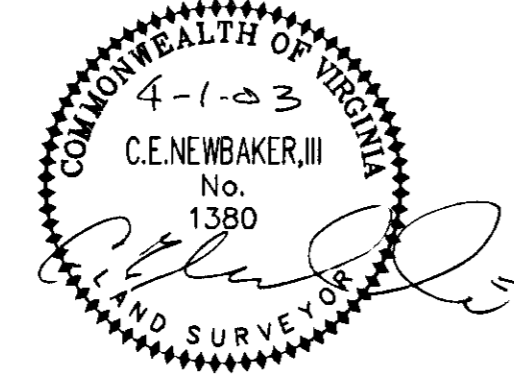
NO.	RADIUS	DELTA	ARC	TANGENT	CHORD	CHORD BRG.
1	950.00'	15°24'33"	255.49'	128.52'	254.72'	S04°35'23"E
2	1006.00'	11°02'41"	193.92'	97.26'	193.62'	N06°46'19"W
3	50.00'	50°45'18"	44.29'	23.72'	42.86'	N55°12'18"E
4	150.00'	38°43'45"	101.39'	52.72'	99.47'	N61°13'04"E
5	60.00'	102°32'30"	107.38'	74.81'	93.61'	N09°25'03"W
6	150.00'	38°43'45"	101.39'	52.72'	99.47'	N80°03'10"W
7	176.00'	12°28'12"	38.31'	19.23'	38.23'	N74°20'51"E
8	224.00'	01°45'06"	6.85'	3.42'	6.85'	N68°59'18"E
9	54.00'	90°00'00"	84.82'	54.00'	76.37'	N54°25'03"W
10	20.00'	81°37'46"	28.49'	17.27'	28.28'	N50°13'56"W
11	224.00'	07°22'12"	28.81'	14.43'	28.79'	N87°21'43"W
12	300.00'	15°23'32"	80.59'	40.54'	80.35'	S88°37'37"W
13	20.00'	90°00'00"	31.42'	20.00'	28.28'	S35°55'51"W
14	15.00'	90°00'00"	23.56'	15.00'	21.21'	S54°04'09"E
15	76.00'	46°31'09"	61.71'	32.67'	60.02'	S29°45'02"E
16	76.00'	16°42'46"	22.17'	11.16'	22.09'	S61°21'59"E
17	324.00'	07°22'59"	41.75'	20.90'	41.72'	S66°01'53"E



NOTE: ALL BUILDING DIMENSIONS SHOWN HEREON ARE EXTERIOR FRAMING DIMENSIONS AND ARE IN FEET.



UTILITY NOTES:
 WATER: EACH UNIT WITHIN THIS CONDOMINIUM IS SERVED BY PUBLIC WATER PROVIDED BY THE CITY OF NEWPORT NEWS.
 SEWER: EACH UNIT WITHIN THIS CONDOMINIUM IS SERVED BY PUBLIC SEWER PROVIDED BY THE COUNTY OF YORK AND H.R.S.D.
 PHASE XIX AREA = 52,013 SQ.FT. OR 1.194 ACRES
 ADDITIONAL AREA = 329,508 SQ.FT. OR 7.564 ACRES
 TOTAL AREA = 1,393,622 SQ.FT. OR 31.993 ACRES



NOW OR FORMERLY
CITY OF NEWPORT NEWS
 (D.B.591, P.385)
 TAX PARCEL 23-00-00-014
 GPIN: R06C-1589-2324

MATCH LINE SHEET 2
 ADDITIONAL LAND OF
RAINBROOK VILLAS, L.L.C.
 329,508 SQ.FT. OR 7.564 ACRES

NOW OR FORMERLY
TODD FARM EQUIPMENT, INC.
 (D.B.908, P.116)
 TAX PARCEL 29-82A
 GPIN: S06A-1206-2555

APPROVED:
 YORK COUNTY BOARD OF SUPERVISORS
 BY: *(Signature)*
 DATE: 4/4/03

STATE OF VIRGINIA
 COUNTY OF YORK
 IN THE CLERK'S OFFICE OF THE CIRCUIT COURT FOR THE COUNTY OF YORK, VIRGINIA, THE 9th DAY OF April, 2003, THIS PLAT WAS PRESENTED AND ADMITTED TO RECORD AS THE LAW DIRECTS AS INSTRUMENT NUMBER:
030009388 10:45 am
 TESTE: Lynn S. Jenkins
 CLERK
 BY: Runde St. Wagner
 DEPUTY CLERK
 PROPERTY IS ASSESSOR'S PARCEL 29-00-00-018
 GPIN: S06C-0684-2246