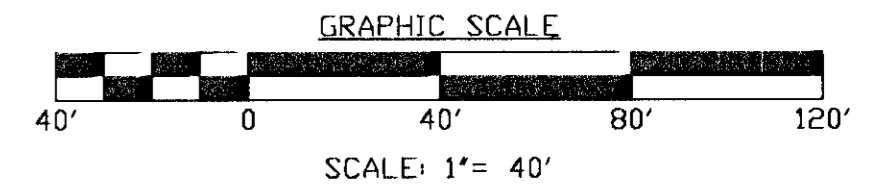
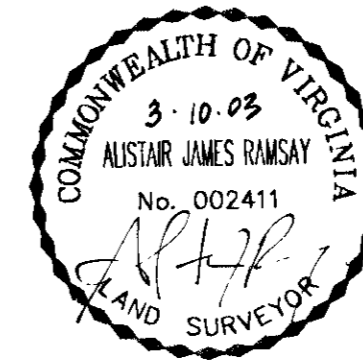


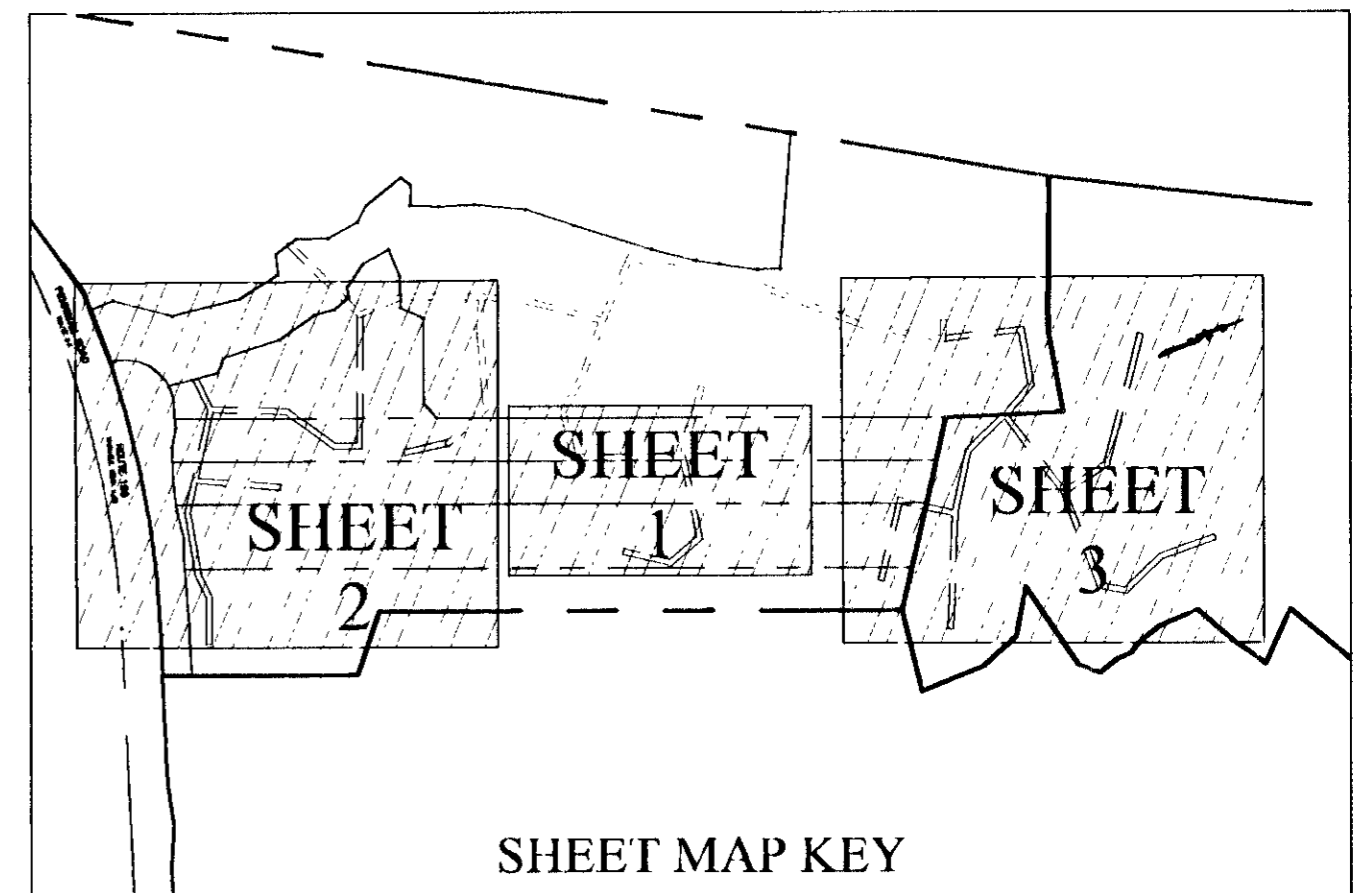
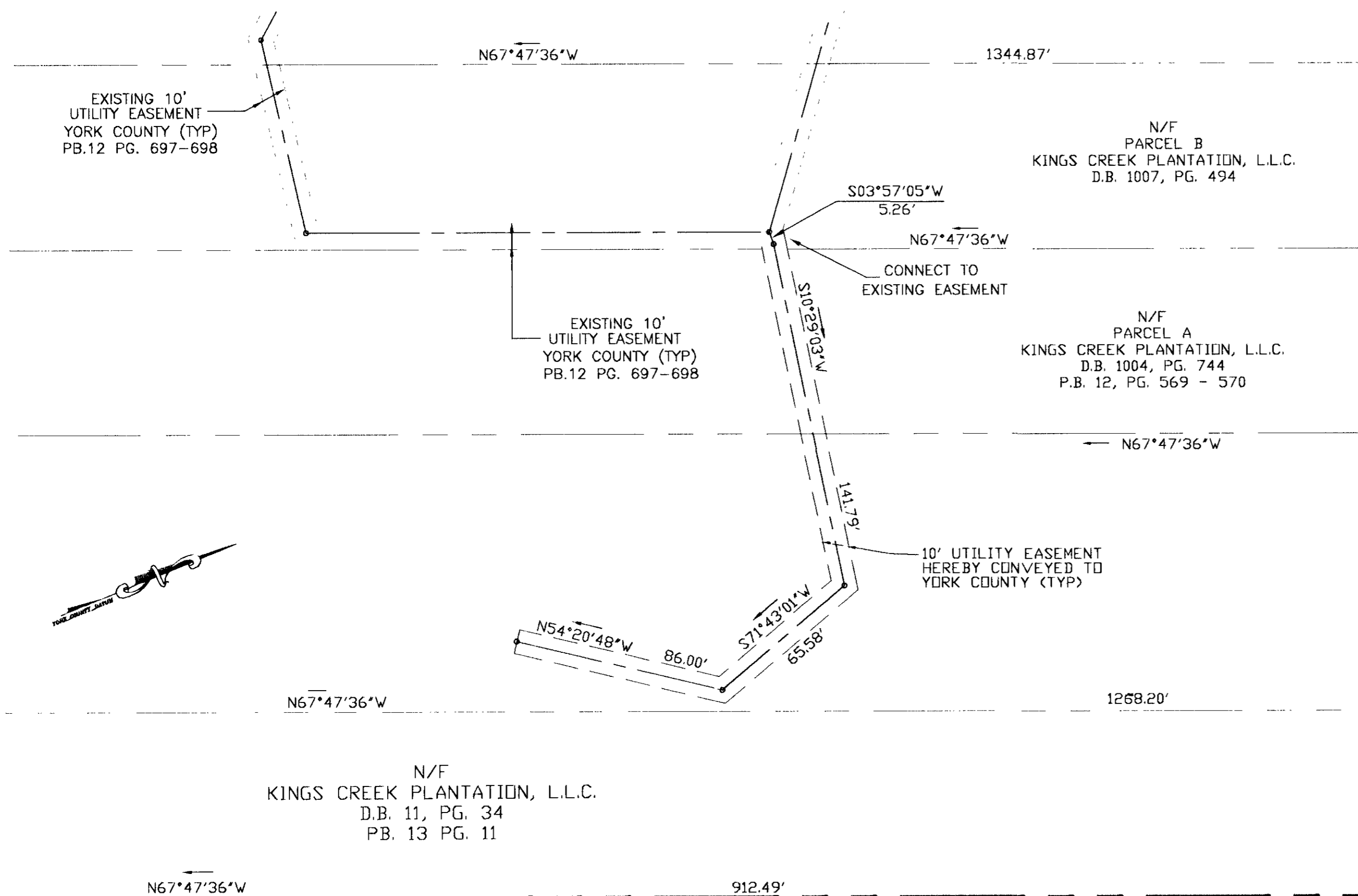
- NOTES:
1. THE RECORDATION OF THIS PLAT SHALL OPERATE TO TRANSFER TO THE COUNTY OF YORK ANY EASEMENT INDICATED ON THE PLAT FOR DRAINAGE AND/OR SANITARY SEWER TO CREATE A PUBLIC RIGHT-OF-PASSAGE OVER THE SAME, UNLESS OTHERWISE NOTED ON THIS PLAT.
 2. DRAINAGE AND UTILITY EASEMENTS CONVEYED TO THE COUNTY BY RECORDATION OF THIS PLAT SHALL BE EXCLUSIVE TO THE COUNTY, UNLESS OTHERWISE NOTED. CONVEYANCE OF SUCH EASEMENTS TO THE COUNTY ALSO INCLUDE: (i) THE COUNTY'S RIGHT OF INGRESS AND EGRESS OVER THE OWNER'S LAND ADJACENT TO THE EASEMENT AS NECESSARY TO INSPECT, MAINTAIN AND OPERATE THE COUNTY'S FACILITIES WITHIN THE EASEMENT AND (ii) THE RIGHT OF THE COUNTY TO ASSIGN TO OTHERS, FROM TIME TO TIME, THE RIGHT TO LOCATE FACILITIES THEREIN SERVING THE PUBLIC, INCLUDING, BUT NOT LIMITED TO, WATER, ELECTRIC, TELEPHONE, COMMUNICATIONS, AND GAS UTILITY FACILITIES.

PLAT OF EASEMENT DEDICATION
 FROM
KINGS CREEK PLANTATION, L.L.C.
 TO THE COUNTY OF YORK, VIRGINIA
 BEING
**KINGS CREEK PLANTATION,
 PHASE I-SPC & SPD**
 BRUTON DISTRICT
 YORK COUNTY, VIRGINIA
 DATE: MARCH 21, 2001
 SHEET 1 OF 3



LEGEND:

- CENTERLINE OF 10' UTILITY EASEMENT HEREBY CONVEYED TO YORK COUNTY
- - - - - LIMITS OF 10' UTILITY EASEMENT HEREBY CONVEYED TO YORK COUNTY
- PROPERTY LINE



APPROVED:
 YORK COUNTY BOARD OF SUPERVISORS
 BY: Al Maddalena
 PLAT APPROVING AGENT
 DATE: 4/28/03

STATE OF VIRGINIA
 COUNTY OF YORK
 IN THE CLERK'S OFFICE OF THE CIRCUIT COURT FOR THE
 COUNTY OF YORK THE 1st DAY OF May, 2003 THIS
 MAP WAS PRESENTED AND ADMITTED TO RECORD AS THE LAW
 DIRECTS IN PLAT BOOK PAGE 10:02am
 TESTE: Lynn S. Jenkins
 CLERK
 DATE: Lisa Bragden, D.C.