

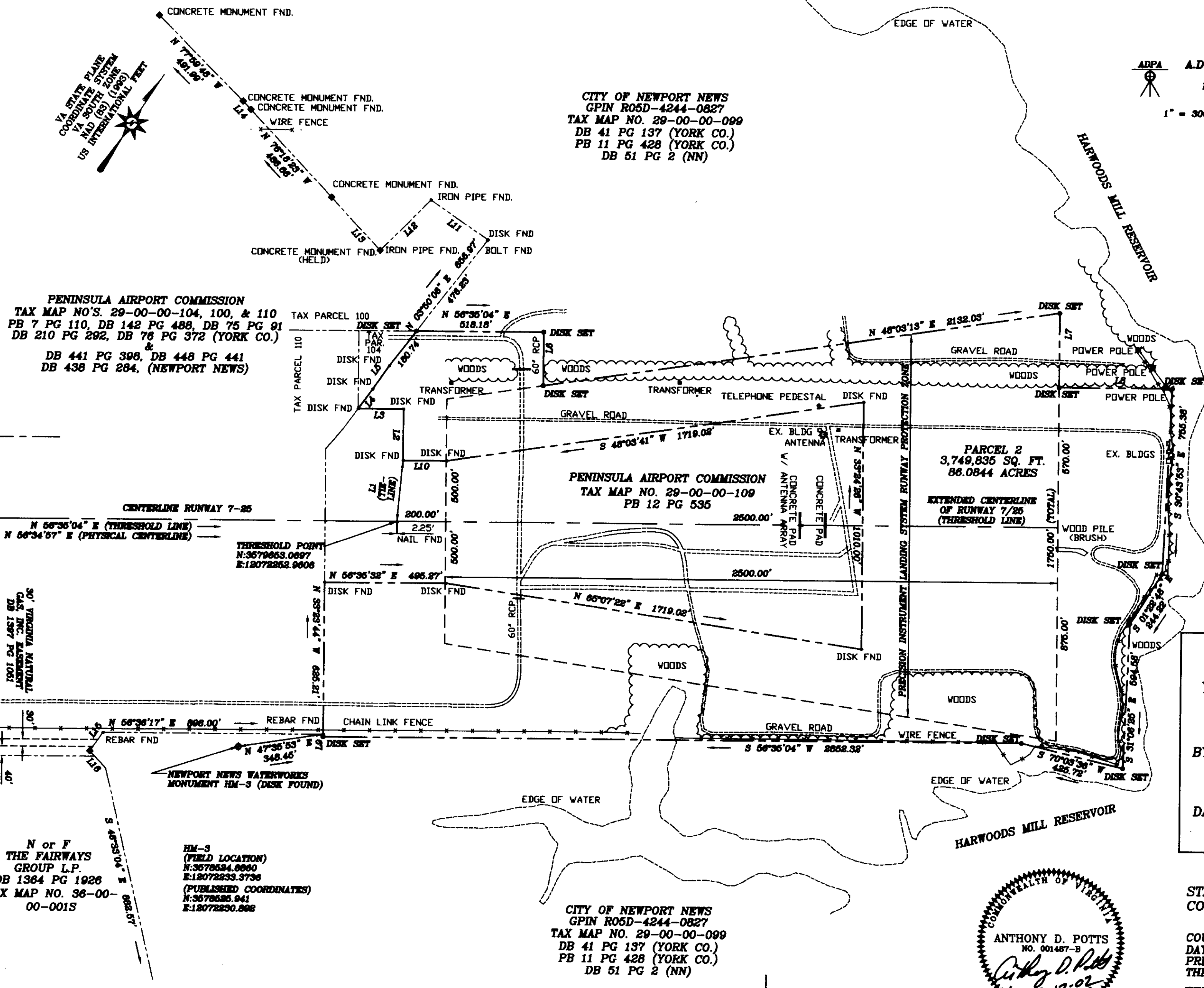
LINE	BEARING	DISTANCE	LINE	BEARING	DISTANCE
L1	N 28°00'01" W	249.80	L9	N 35°24'56" W	10.00
L2	N 35°24'28" W	208.20	L10	S 56°36'32" W	178.50
L3	S 56°36'32" W	185.80	L11	N 86°07'51" W	283.78
L4	N 08°41'08" E	100.52	L12	S 11°22'37" W	292.53
L5	N 01°33'06" E	116.82	L13	N 76°22'20" W	294.44
L6	S 38°24'56" E	290.00	L14	N 76°36'48" W	46.78
L7	S 38°24'56" E	306.00	L15	N 00°56'47" E	93.54
L8	N 56°36'04" E	461.72	L16	N 76°14'24" W	96.30

SUBDIVISION OF THE PROPERTY OF
CITY OF NEWPORT NEWS
 FOR CONVEYANCE TO
THE PENINSULA AIRPORT COMMISSION
 BEING A PARCEL OF LAND CONTAINING
86.0844 Ac.
 GRAFTON DISTRICT
 YORK COUNTY, VIRGINIA

ADPA **A.D. POTTS & ASSOCIATES, INC.**
 11624 JEFFERSON AVENUE
 NEWPORT NEWS, VIRGINIA 23001
 PHONE: (757) 596-4810

1" = 300'
 DECEMBER 17, 2002
 SHEET 2 OF 2

CITY OF NEWPORT NEWS
 GPIN R05D-4244-0827
 TAX MAP NO. 29-00-00-099
 DB 41 PG 137 (YORK CO.)
 PB 11 PG 428 (YORK CO.)
 DB 51 PG 2 (NN)



PENINSULA AIRPORT COMMISSION
 TAX MAP NO'S. 29-00-00-104, 100, & 110
 PB 7 PG 110, DB 142 PG 488, DB 75 PG 91
 DB 210 PG 292, DB 78 PG 372 (YORK CO.)
 &
 DB 441 PG 398, DB 448 PG 441
 DB 438 PG 284, (NEWPORT NEWS)

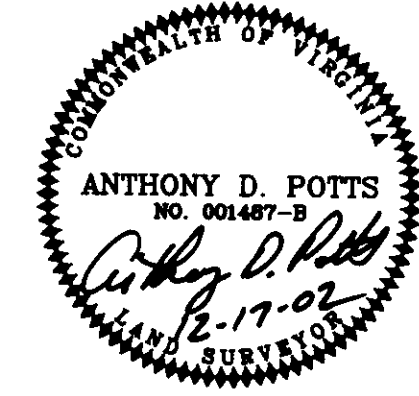
30' TYPICAL WOODS
 100' TYPICAL WOODS
 45' TYPICAL WOODS

N or F
 THE FAIRWAYS
 GROUP L.P.
 DB 1364 PG 1928
 TAX MAP NO. 36-00-
 00-0015

HM-3
 (FIELD LOCATION)
 N:3579854.6660
 E:18072253.3736
 (PUBLISHED COORDINATES)
 N:3579856.941
 E:18072250.882

CITY OF NEWPORT NEWS
 GPIN R05D-4244-0827
 TAX MAP NO. 29-00-00-099
 DB 41 PG 137 (YORK CO.)
 PB 11 PG 428 (YORK CO.)
 DB 51 PG 2 (NN)

APPROVED
 YORK COUNTY BOARD OF SUPERVISORS
 BY: *Al Maddalena*
 PLAT APPROVING AGENT
 DATE: 5/1/03



STATE OF VIRGINIA
 COUNTY OF YORK
 IN THE CLERK'S OFFICE OF THE CIRCUIT
 COURT FOR THE COUNTY OF YORK, THIS 2nd
 DAY OF May, 2003, THIS MAP WAS
 PRESENTED AND ADMITTED TO RECORD AS
 THE LAW DIRECTS AS INSTRUMENT NUMBER
 03001209
 TESTE *Lynn S. Jenkins* CLERK
 BY *Dick Bragdon* DEPUTY CLERK