

**LEGEND:**

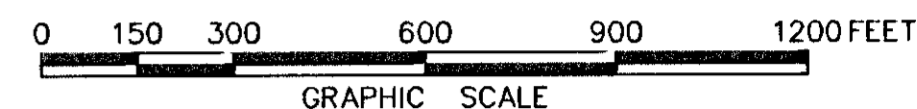
- DENOTES PIN SET
- DENOTES PIN, PIPE, OR MONUMENT FOUND
- RPA DENOTES RESOURCE PROTECTION AREA
- RMA DENOTES RESOURCE MANAGEMENT AREA

**SUBDIVISION OF PARCEL A,  
PROPERTY OF  
MID-ATLANTIC HOLDINGS, L.L.C.,  
A VIRGINIA LIMITED LIABILITY COMPANY**

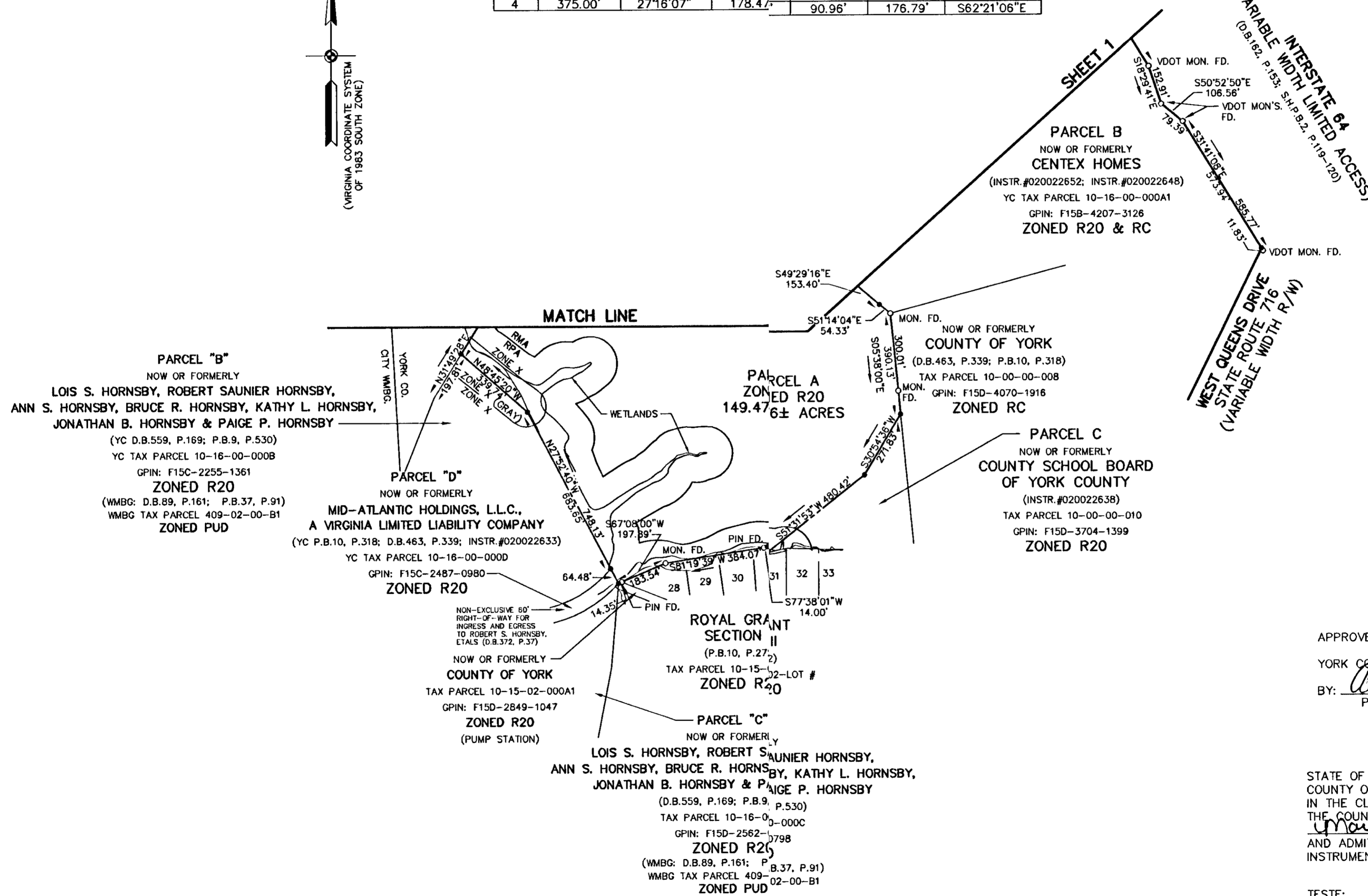
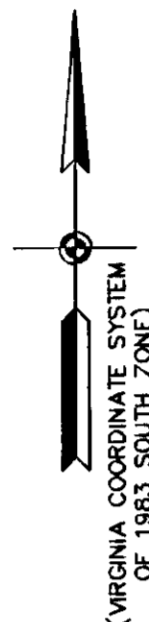
BRUTON DISTRICT - COUNTY OF YORK, VIRGINIA  
SCALE: 1"=300' JANUARY 26, 2003

**THE SIRINE GROUP, LTD.**  
SURVEYORS • ENGINEERS • PLANNERS  
P.O. BOX 450, ROUTE 17  
WHITE MARSH, VIRGINIA 23183

**SHEET 2 OF 2**



CURVE TABLE						
NO.	RADIUS	DELTA	ARC	TANGENT	CHORD	CHORD BRG.
1	310.00'	09°49'44"	53.18'	26.65'	53.11'	S45°25'36"W
2	575.00'	01°08'37"	11.48'	5.74'	11.48'	S73°34'54"W
3	425.00'	04°40'14"	34.64'	17.33'	34.63'	N80°46'35"E
4	375.00'	27°16'07"	178.47'	90.96'	176.79'	S62°21'06"E



APPROVED:  
YORK COUNTY BOARD OF SUPERVISORS  
BY: Al Maddalena DATE: 5/1/03  
PLAT APPROVING AGENT

STATE OF VIRGINIA  
COUNTY OF YORK  
IN THE CLERK'S OFFICE OF THE CIRCUIT COURT FOR THE COUNTY OF YORK, VIRGINIA, THE 2nd DAY OF May, 2003, THIS PLAT WAS PRESENTED AND ADMITTED TO RECORD AS THE LAW DIRECTS AS INSTRUMENT NUMBER 030012092. 3:14pm

TESTE: Lynn S. Jenkins  
CLERK  
BY: Lisa Brogden, D.C.

PROPERTY IS ASSESSOR'S PARCEL NUMBER:  
10-16-00-000A; GPIN: F15A-2498-4203

WATER: EACH LOT WITHIN THIS SUBDIVISION IS SERVED BY PUBLIC WATER PROVIDED BY THE CITY OF NEWPORT NEWS.

SEWER: EACH LOT WITHIN THIS SUBDIVISION IS SERVED BY PUBLIC SEWER PROVIDED BY THE COUNTY OF YORK.

TOTAL SUBDIVIDED AREA = 160.008± ACRES