

**SUBDIVISION PLAT
CREEKSIDE LANDING
SECTION ONE**

BRUTON DISTRICT - COUNTY OF YORK, VIRGINIA

SCALE: 1" = 60' MARCH 14, 2003

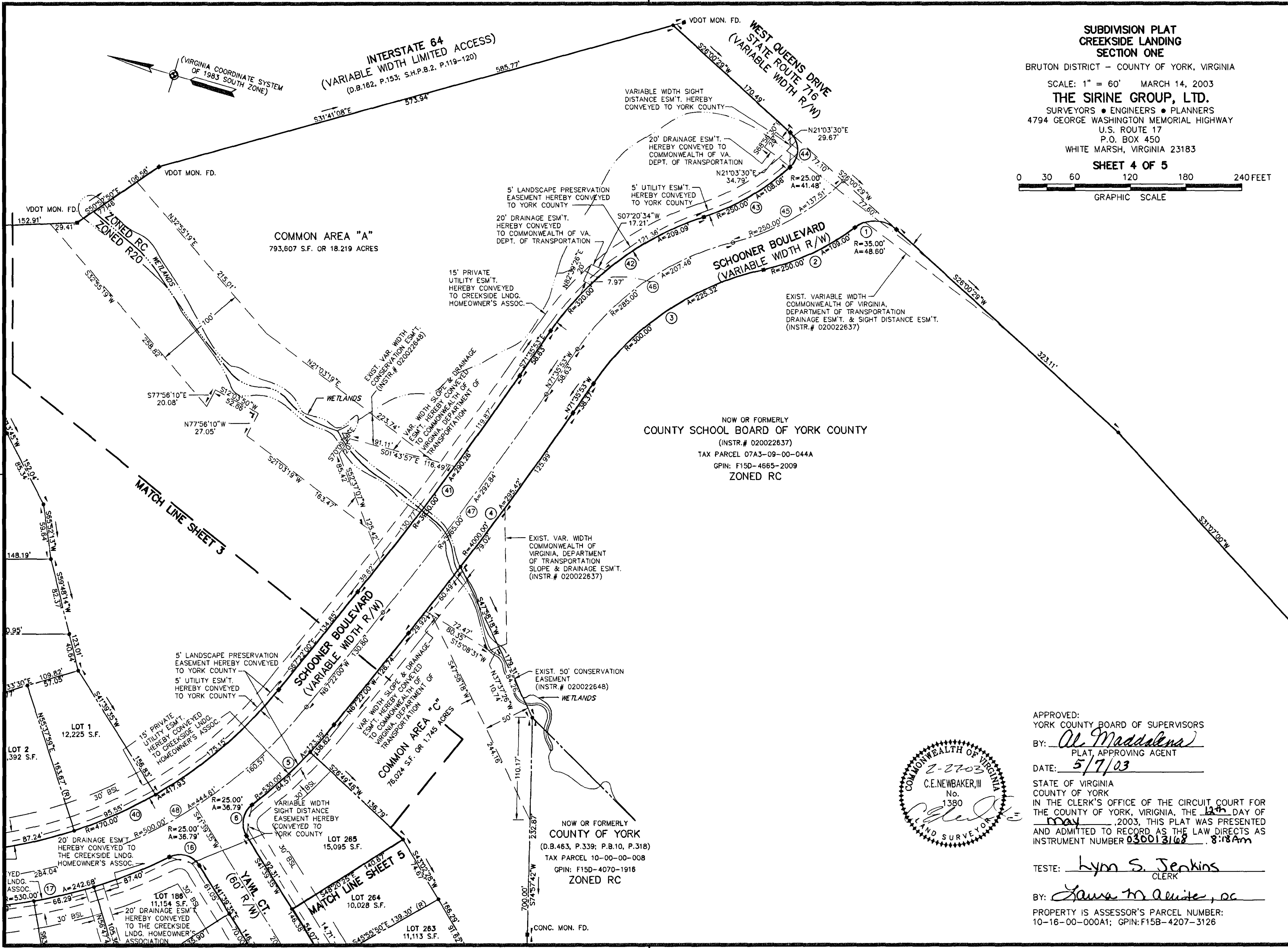
THE SIRINE GROUP, LTD.

SURVEYORS • ENGINEERS • PLANNERS
4794 GEORGE WASHINGTON MEMORIAL HIGHWAY
U.S. ROUTE 17
P.O. BOX 450
WHITE MARSH, VIRGINIA 23183

SHEET 4 OF 5

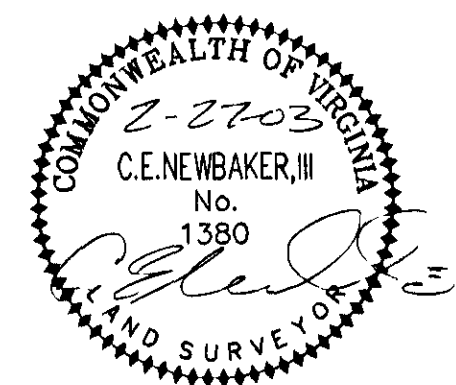
0 30 60 120 180 240 FEET

GRAPHIC SCALE



NOW OR FORMERLY
COUNTY SCHOOL BOARD OF YORK COUNTY
(INSTR.# 020022637)
TAX PARCEL 07A3-09-00-044A
GPIN: F15D-4665-2009
ZONED RC

NOW OR FORMERLY
COUNTY OF YORK
(D.B.463, P.339; P.B.10, P.318)
TAX PARCEL 10-00-00-008
GPIN: F15D-4070-1916
ZONED RC



APPROVED:
YORK COUNTY BOARD OF SUPERVISORS
BY: Al Maddalena
PLAT APPROVING AGENT
DATE: 5/7/03

STATE OF VIRGINIA
COUNTY OF YORK
IN THE CLERK'S OFFICE OF THE CIRCUIT COURT FOR
THE COUNTY OF YORK, VIRGINIA, THE 12th DAY OF
May, 2003, THIS PLAT WAS PRESENTED
AND ADMITTED TO RECORD AS THE LAW DIRECTS AS
INSTRUMENT NUMBER 030013168 8:18 Am

TESTE: Lynn S. Jenkins
CLERK

BY: Laura M. White, PC

PROPERTY IS ASSESSOR'S PARCEL NUMBER:
10-16-00-000A1; GPIN: F15B-4207-3126