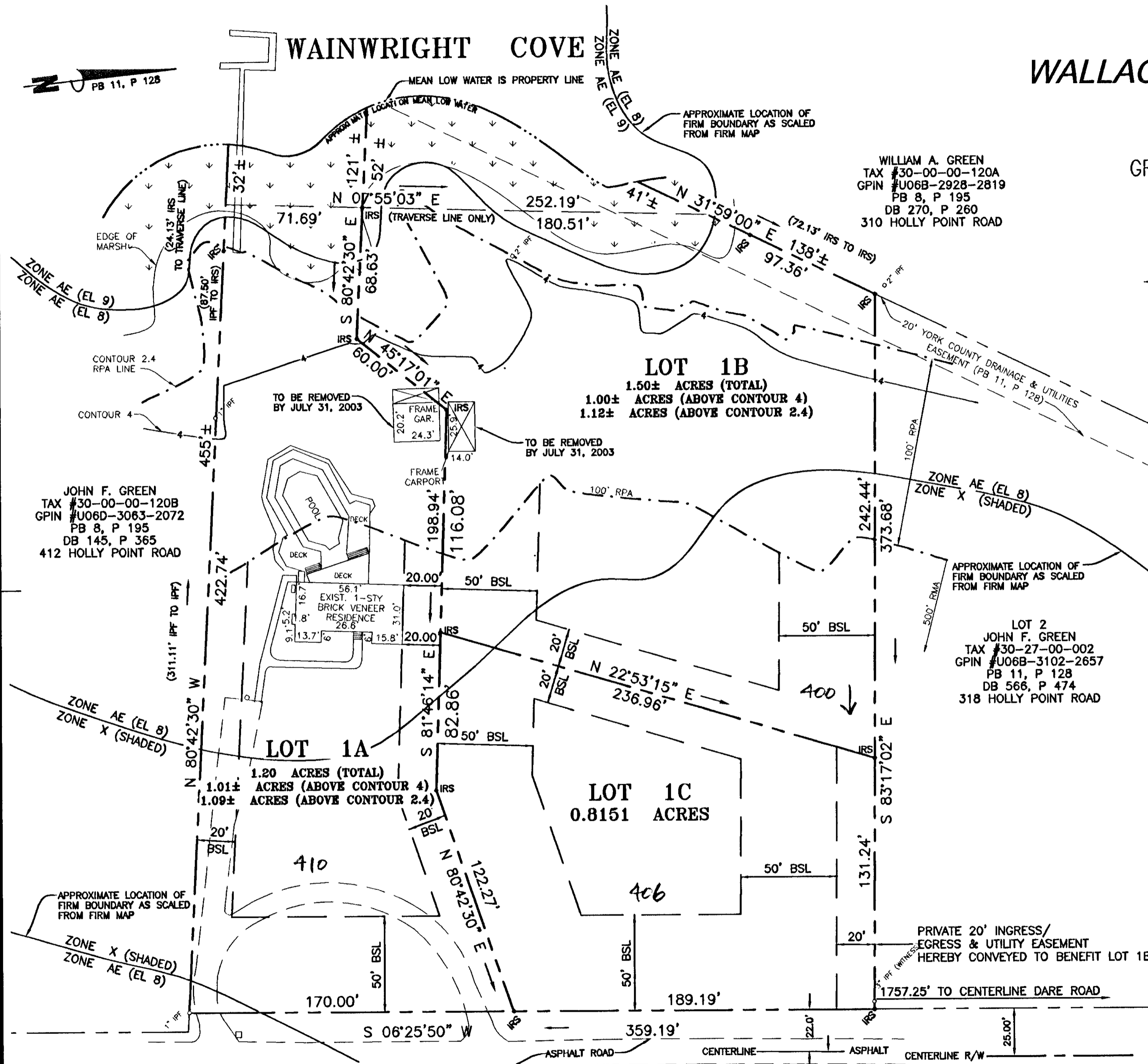
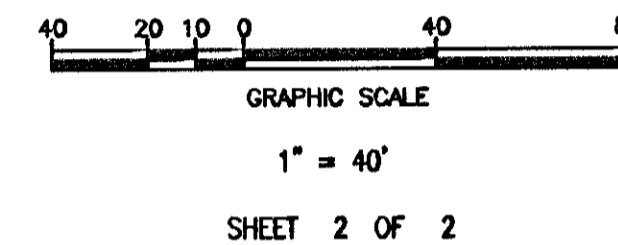
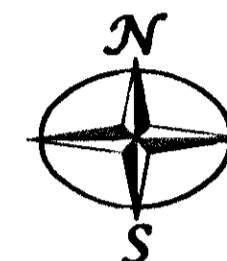


FAMILY SUBDIVISION OF LOT 1 BELONGING TO WALLACE C. GREEN & JUNE W. GREEN

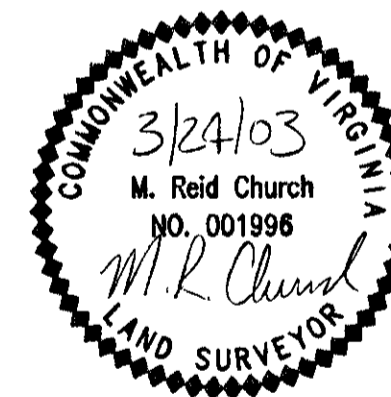
GRAFTON DISTRICT - YORK COUNTY, VIRGINIA
MARCH 24, 2003

Simmons Newsome, P.C.
Surveyors Planners
110A Dare Road
Yorktown, Virginia 23692
Phone (757) 898-4914 Fax (757) 898-4914



MONUMENT LEGEND

- AXF=AXLE FOUND
- CMF=CONCRETE MONUMENT FOUND
- CMS=CONCRETE MONUMENT SET
- DHF=DRILL HOLE FOUND
- DHS=DRILL HOLE SET
- INF=IRON NAIL FOUND
- INS=IRON NAIL SET
- IPF=IRON PIPE FOUND
- IPS=IRON PIPE SET
- IRF=IRON ROD FOUND
- IRS=IRON ROD SET
- X CUT=CHISELED "X"



APPROVED:
YORK COUNTY BOARD OF SUPERVISORS

BY: M. Maddalena
Plat Approving Agent

DATE: 5/29/03

STATE OF VIRGINIA
COUNTY OF YORK

In the Clerk's Office of the Circuit Court for the
County of York the 5th day of June, 2003 this
map was presented and admitted to record as
the law directs in Instrument # 030016016

TESTE: Lynn S. Jenkins 9:12am
Clerk
BY: Rosa Bradley, D.C. 02-08-2648
SHEET 2.DWG

HOLLY POINT ROAD STATE ROUTE 620
VARIABLE WIDTH R/W