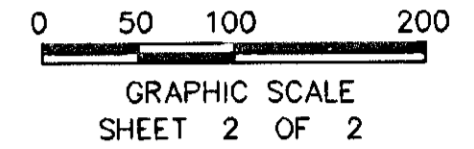
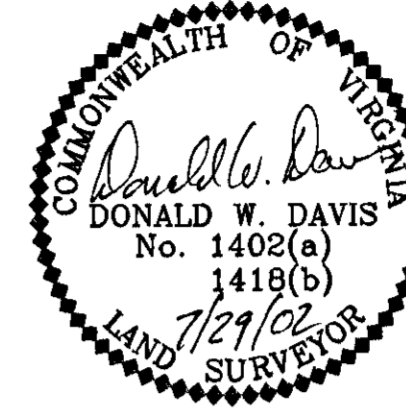
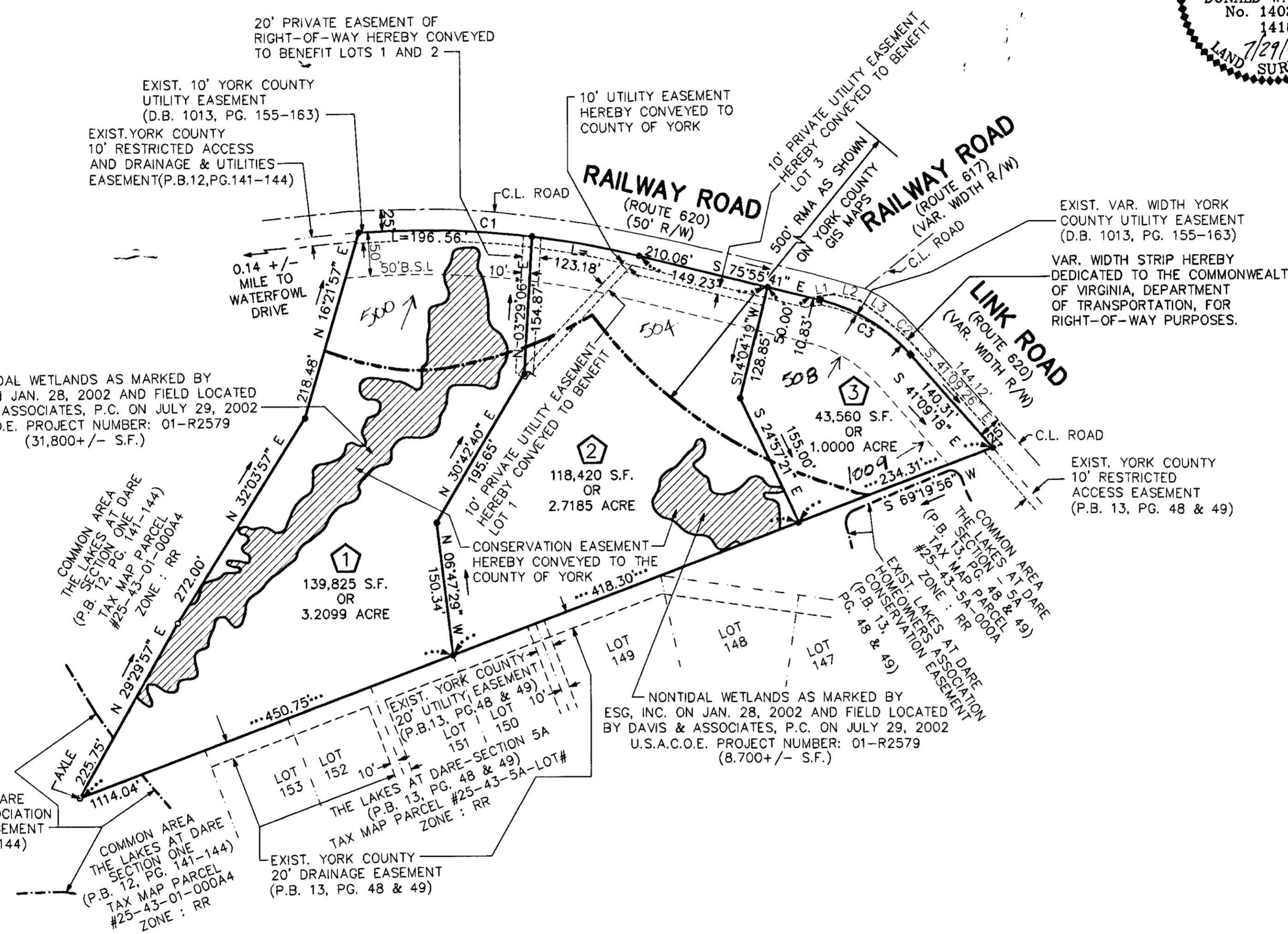


SUBDIVISION OF
 THE PROPERTY OF
**DAVID B. &
 RHONDA E. VENABLE
 AND STEPHEN B. AMARILLO**
 GRAFTON MAGISTERIAL DISTRICT
 COUNTY OF YORK, VIRGINIA
 SCALE : 1" = 100' DATE : 29 JULY 2002
DAVIS & ASSOCIATES, P.C.
 SURVEYORS - PLANNERS
 3630 GEORGE WASHINGTON
 MEMORIAL HIGHWAY - SUITE "G"
 YORKTOWN, VIRGINIA 23693



- SYMBOLS -

- DENOTES MINIMUM BUILDING SETBACK LINE
- DENOTES IRON PIPE FOUND
- DENOTES IRON PIPES TO BE SET AT ALL PROPERTY LINE JUNCTURES
- DENOTES CONCRETE MONUMENT FOUND
- DENOTES CONCRETE MONUMENT TO BE SET
- RMA DENOTES RESOURCE MANAGEMENT AREA



NONTIDAL WETLANDS AS MARKED BY
 ESG, INC. ON JAN. 28, 2002 AND FIELD LOCATED
 BY DAVIS & ASSOCIATES, P.C. ON JULY 29, 2002
 U.S.A.C.O.E. PROJECT NUMBER: 01-R2579
 (31,800+/- S.F.)

NONTIDAL WETLANDS AS MARKED BY
 ESG, INC. ON JAN. 28, 2002 AND FIELD LOCATED
 BY DAVIS & ASSOCIATES, P.C. ON JULY 29, 2002
 U.S.A.C.O.E. PROJECT NUMBER: 01-R2579
 (8,700+/- S.F.)

APPROVED

YORK COUNTY BOARD OF SUPERVISORS

BY: *Al Maddalena*
 PLAT APPROVING AGENT

DATE: 6/3/03

LINE NUMBER	DIRECTION	DISTANCE
L1	N 82°15'18" E	26.94'
L2	S 75°55'38" E	30.47'
L3	S 52°30'48" E	37.91'

NUMBER	CURVE DATA			TABLE		
	DELTA ANGLE	RADIUS	ARC LENGTH	TANGENT	CHORD LENGTH	CHORD DIRECTION
C1	18°01'05"	1016.74	319.74	161.20	318.42	S 84°56'22" E
C2	09°52'27"	267.74	46.14	23.13	46.08	S 46°49'44" E
C3	34°46'24"	200.00	121.38	62.63	119.53	S 58°32'29" E

STATE OF VIRGINIA
 COUNTY OF YORK
 IN THE CLERK'S OFFICE OF THE CIRCUIT
 COURT FOR THE COUNTY OF YORK THE 11th
 DAY OF June 2003 THIS MAP WAS 9:07 am
 PRESENTED AND ADMITTED TO RECORD AS
 THE LAW DIRECTS AS INSTRUMENT # 030016617

TESTE: *Lynn S Jenkins*
 CLERK

BY: *Amelia Corcoran DC*