

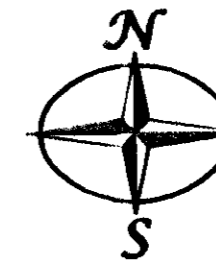
SUBDIVISION PLAT OF TIDE MILL ESTATES SECTION FOUR

BETHEL DISTRICT - YORK COUNTY, VIRGINIA

MAY 28, 2003

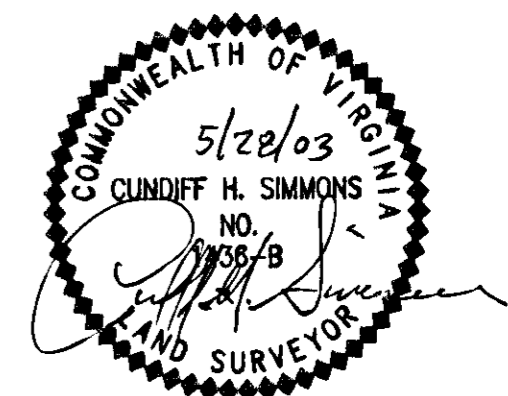
Simmons Newsome, P.C.

Surveyors Planners
110A Dare Road
Yorktown, Virginia 23692
Phone (757) 898-4914 Fax (757) 898-4914



1" = 100'
SHEET 2 OF 2

NOTE: ALL DRAINAGE AND/OR UTILITY EASEMENTS HEREBY CONVEYED TO YORK COUNTY.



| LINE TABLE | | |
|------------|--------|-------------|
| LINE | LENGTH | BEARING |
| L1 | 10.96 | N27°29'05"E |
| L2 | 80.75 | S31°01'51"W |
| L3 | 18.36 | S13°02'36"E |
| L4 | 29.19 | S11°20'43"W |
| L5 | 50.00 | N41°03'56"W |
| L6 | 83.40 | N53°24'03"W |
| L7 | 89.45 | N68°30'36"E |
| L8 | 62.07 | S23°29'24"E |
| L9 | 63.88 | S59°34'48"E |
| L10 | 63.88 | N59°34'48"W |
| L11 | 173.12 | N68°30'36"E |
| L12 | 113.88 | N59°34'48"W |
| L13 | 112.07 | N23°29'24"W |
| L14 | 289.50 | N23°29'24"W |
| L15 | 35.00 | N68°30'36"E |
| L16 | 223.12 | S68°30'36"W |
| L17 | 35.00 | S23°29'24"E |
| L18 | 401.57 | N23°29'24"W |

APPROVED:
YORK COUNTY BOARD OF SUPERVISORS

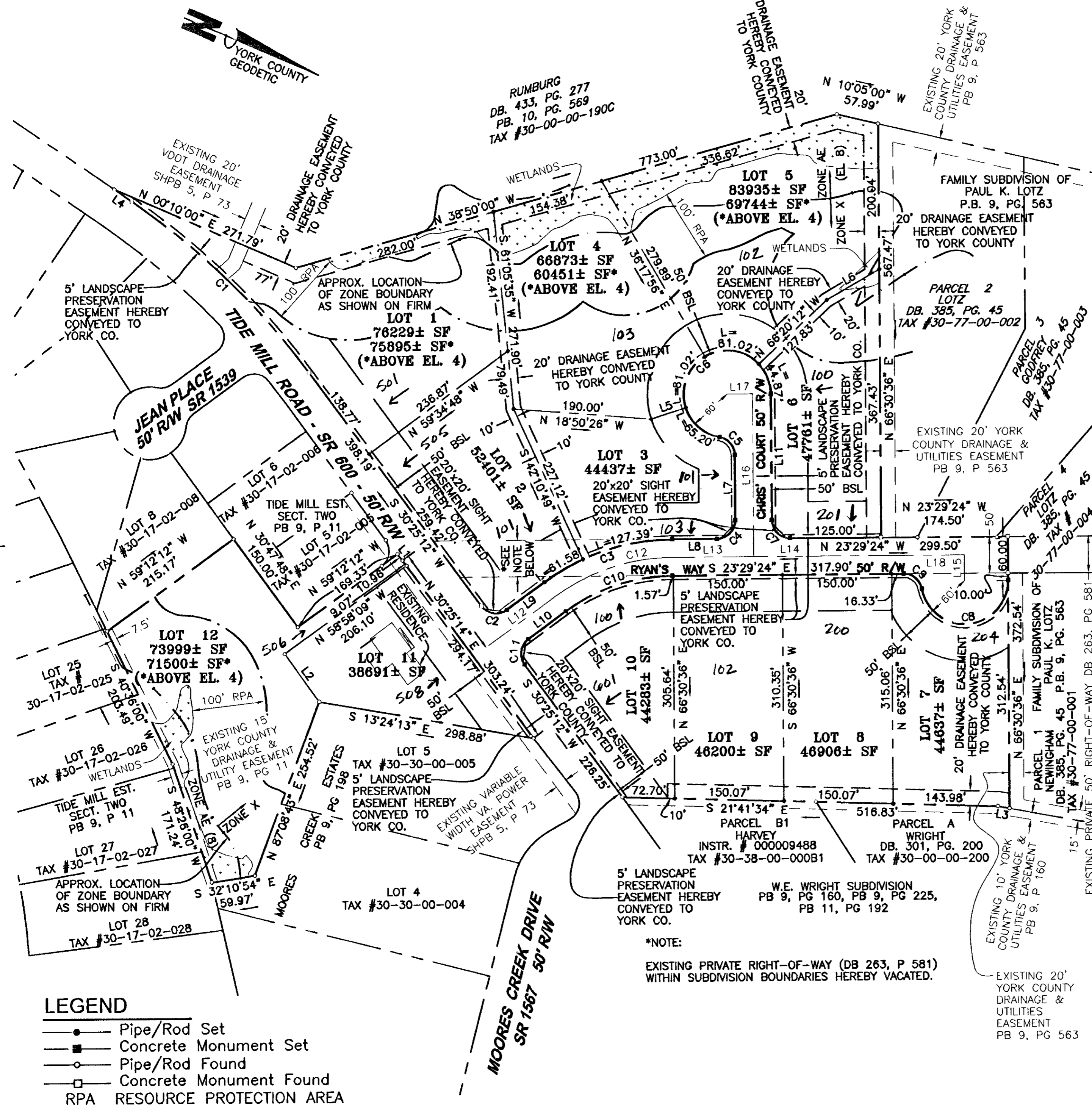
BY: Al. Maddalena
Plat Approving Agent

DATE: 6/25/03

STATE OF VIRGINIA
COUNTY OF YORK

In the Clerk's Office of the Circuit Court for the County of York the 29 day of July, 2003 this map was presented and admitted to record as the law directs in Instrument #030020073 10:35am

TESTE: Lynn S. Jenkins
Clerk
BY: Julia Ann D.C. 01-06-2586
SHEET 2 TME 4.DW



LEGEND

- Pipe/Rod Set
- Concrete Monument Set
- Pipe/Rod Found
- Concrete Monument Found
- RPA RESOURCE PROTECTION AREA

*NOTE:
EXISTING PRIVATE RIGHT-OF-WAY (DB 263, P 581)
WITHIN SUBDIVISION BOUNDARIES HEREBY VACATED.