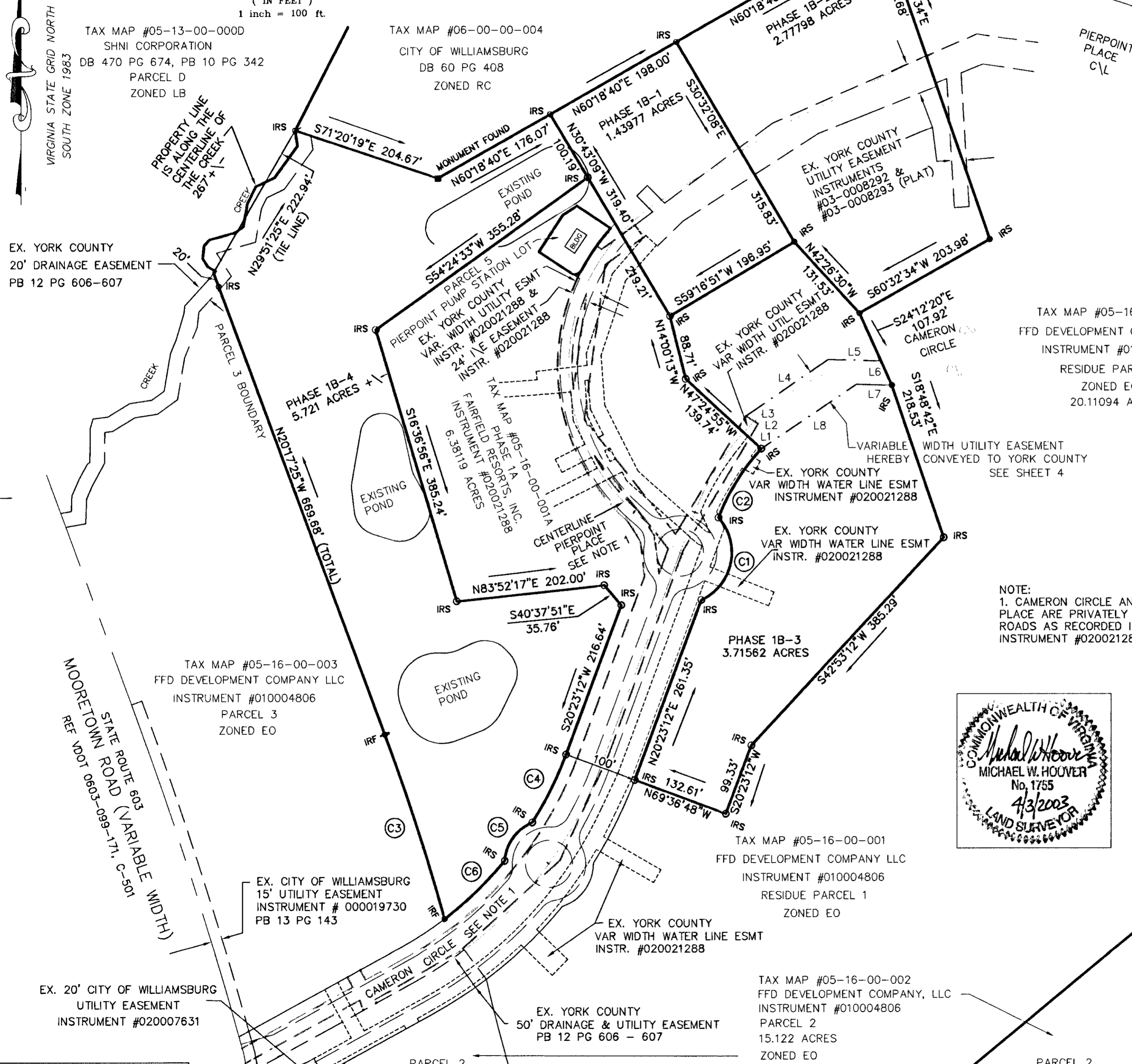
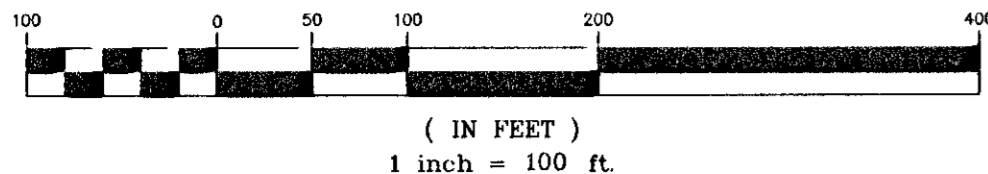


GRAPHIC SCALE



PLAT OF SUBDIVISION  
AND DEDICATION OF EASEMENTS  
PHASE 1B  
FAIRFIELD WILLIAMSBURG @  
GOVERNOR'S GREEN

BRUTON DISTRICT YORK COUNTY, VIRGINIA  
SCALE 1"=100'

DATE: SEPTEMBER 12, 2002 LAST REVISED APRIL 3, 2003

**Dewberry & Davis, Inc.**

A Dewberry Company  
Architects Engineers Planners Surveyors  
9881 MAYLAND DRIVE, SUITE 201  
RICHMOND, VA 23233 PHONE 804 290-7957, FAX 804 290-7928

LINE TABLE

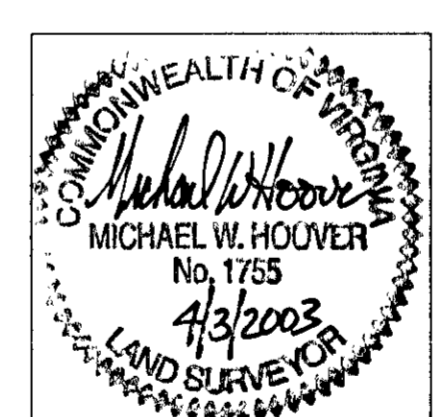
COURSE	BEARING	DISTANCE
L1	N47°24'55"W	21.16'
L2	N30°42'24"E	22.88'
L3	N59°17'36"W	20.00'
L4	N55°43'23"E	136.09'
L5	S88°24'41"E	71.75'
L6	S24°12'20"E	36.30'
L7	N88°17'39"W	48.09'
L8	S56°08'00"W	156.45'

CURVE TABLE

C1	Rad: 70.50' Tan: 96.78' Chd: N11°47'40"E	Arc: 132.72' CA: 107°51'33" 113.97'
C2	Rad: 297.50' Tan: 56.20' Chd: N31°53'16"E	Arc: 111.08' CA: 21°23'39" 110.44'
C3	Rad: 3307.50' Tan: 131.92' Chd: N18°00'23"W	Arc: 263.70' CA: 4°34'05" 263.63'
C4	Rad: 500.00' Tan: 51.99' Chd: S26°19'21"W	Arc: 103.60' CA: 11°52'17" 103.41'
C5	Rad: 60.50' Tan: 37.78' Chd: S35°55'58"W	Arc: 67.54' CA: 63°57'47" 64.09'
C6	Rad: 500.00' Tan: 57.09' Chd: S46°07'14"W	Arc: 113.68' CA: 13°01'36" 113.43'

TAX MAP #05-16-00-001  
FFD DEVELOPMENT COMPANY LLC  
INSTRUMENT #010004806  
RESIDUE PARCEL 1  
ZONED EO  
20.11094 ACRES

NOTE:  
1. CAMERON CIRCLE AND PIERPOINT PLACE ARE PRIVATELY MAINTAINED ROADS AS RECORDED IN INSTRUMENT #020021288.



APPROVED:  
YORK COUNTY BOARD OF SUPERVISORS  
BY: Al Maddalena PLAT APPROVING AGENT.  
DATE: 7-10-03

COMMONWEALTH OF VIRGINIA  
COUNTY OF YORK  
IN THE CLERK'S OFFICE OF THE CIRCUIT COURT FOR THE COUNTY OF YORK THE 11<sup>th</sup> DAY OF July, 2003.  
THIS MAP WAS PRESENTED AND ADMITTED TO RECORD AS THE LAW DIRECTS.  
INSTRUMENT NO. 030000999 9:16:07  
TESTE: Lynn S. Jenkins CLERK  
BY: Rose Bruden, D.C.