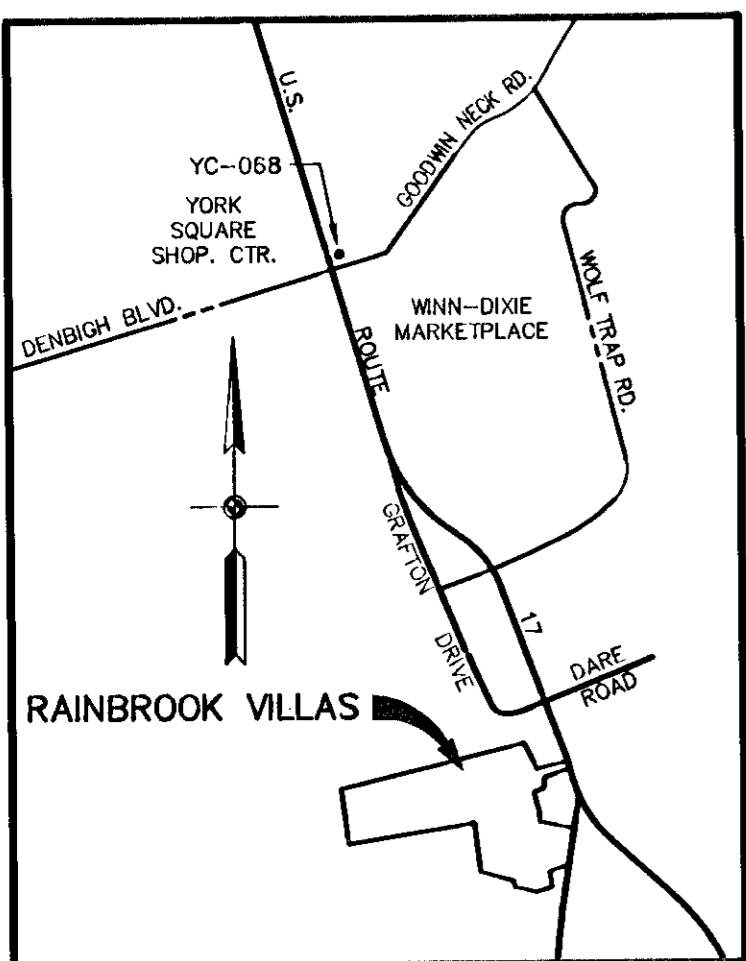


EXHIBIT "C"
PLAT OF
RAINBROOK VILLAS
A CONDOMINIUM
PHASE XX (INSTR. #020005988)
SHEET 1 OF 5

GRAFTON DISTRICT - COUNTY OF YORK, VIRGINIA
SCALE: 1" = 100' **JUNE 4, 2003**
0 50 100 200 300 400 FEET

THE SIRINE GROUP, LTD.
 SURVEYORS • ENGINEERS • PLANNERS
 4794 GEORGE WASHINGTON MEMORIAL HIGHWAY
 U.S. ROUTE 17
 P.O. BOX 450
 WHITE MARSH, VIRGINIA 23183

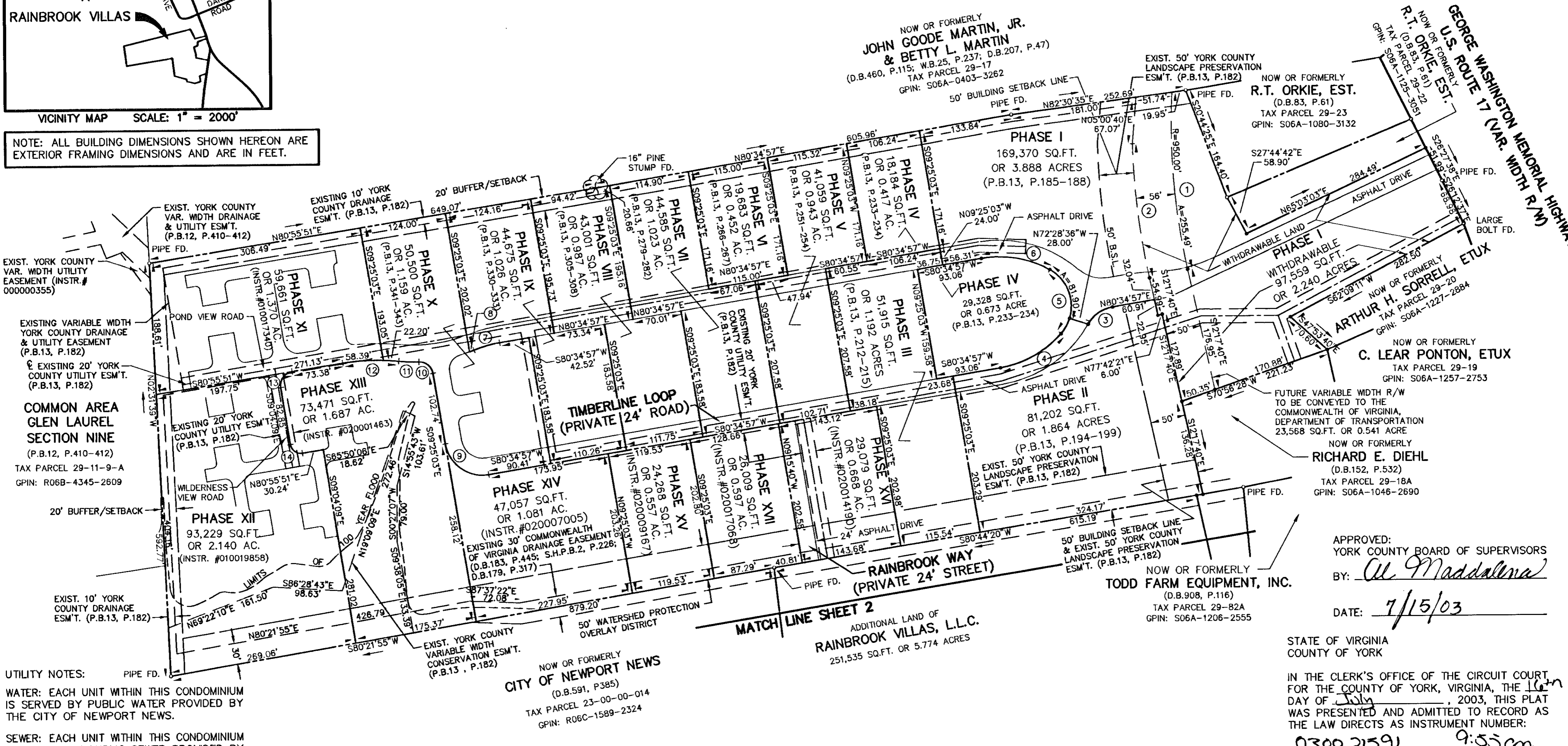
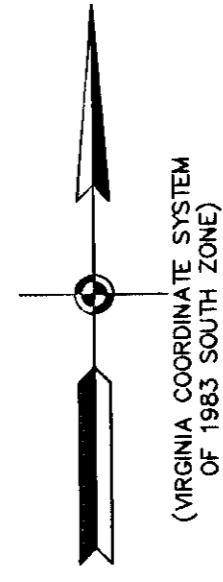


VICINITY MAP **SCALE: 1" = 2000'**

NOTE: ALL BUILDING DIMENSIONS SHOWN HEREON ARE EXTERIOR FRAMING DIMENSIONS AND ARE IN FEET.

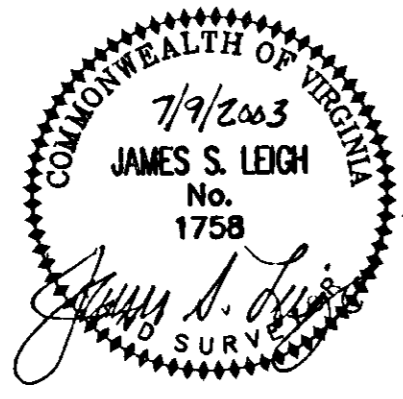
NOTE: PROPERTY LIES IN ZONE X, WHITE, (AREAS DETERMINED TO BE OUTSIDE 500-YEAR FLOOD PLAIN), AS SHOWN ON FLOOD INSURANCE RATE MAP FOR YORK COUNTY, VIRGINIA, COMM. NO. 510182 0036B, 12/16/88 AND COMM. NO. 510182 0037B, 12/16/88.

NO.	RADIUS	DELTA	ARC	TANGENT	CHORD	CHORD BRG.
1	950.00'	15°24'33"	255.49'	128.52'	254.72'	S04°35'23"E
2	1006.00'	11°02'41"	193.92'	97.26'	193.62'	N06°46'19"W
3	50.00'	50°45'18"	44.29'	23.72'	42.86'	N55°12'18"E
4	150.00'	38°43'45"	101.39'	52.72'	99.47'	N61°13'04"E
5	60.00'	102°32'30"	107.38'	74.81'	93.61'	N09°25'03"W
6	150.00'	38°43'45"	101.39'	52.72'	99.47'	N80°03'10"W
7	176.00'	12°28'12"	38.31'	19.23'	38.23'	N74°20'51"E
8	224.00'	01°45'06"	6.85'	3.42'	6.85'	N68°59'18"E
9	54.00'	90°00'00"	84.82'	54.00'	76.37'	N54°25'03"W
10	20.00'	81°37'46"	28.49'	17.27'	26.14'	N50°13'56"W
11	224.00'	07°22'12"	28.81'	14.43'	28.79'	N87°21'43"W
12	300.00'	15°23'32"	80.59'	40.54'	80.35'	S88°37'37"W
13	20.00'	90°00'00"	31.42'	20.00'	28.28'	S35°55'51"W
14	15.00'	90°00'00"	23.56'	15.00'	21.21'	S54°04'09"E
15	76.00'	46°31'09"	61.71'	32.67'	60.02'	S29°45'02"E
16	76.00'	16°42'46"	22.17'	11.16'	22.09'	S61°21'59"E
17	324.00'	07°22'59"	41.75'	20.90'	41.72'	S66°01'53"E



UTILITY NOTES:
 WATER: EACH UNIT WITHIN THIS CONDOMINIUM IS SERVED BY PUBLIC WATER PROVIDED BY THE CITY OF NEWPORT NEWS.
 SEWER: EACH UNIT WITHIN THIS CONDOMINIUM IS SERVED BY PUBLIC SEWER PROVIDED BY THE COUNTY OF YORK AND H.R.S.D.
 PHASE XX AREA = 77,973 SQ.FT. OR 1.790 ACRES
 ADDITIONAL AREA = 251,535 SQ.FT. OR 5.774 ACRES
 TOTAL AREA = 1,393,622 SQ.FT. OR 31.993 ACRES

THIS PROPERTY IS SUBJECT TO COVENANTS, CONDITIONS, RESTRICTIONS, EASEMENTS, LIENS FOR ASSESSMENTS, OPTIONS, POWER OF ATTORNEYS, AND LIMITATIONS ON TITLE, CREATED BY THE VIRGINIA CONDOMINIUM STATUTE.



CITY OF NEWPORT NEWS
 (D.B.591, P.385)
 TAX PARCEL 23-00-00-014
 GPIN: R06C-1589-2324

ADDITIONAL LAND OF RAINBROOK VILLAS, L.L.C.
 251,535 SQ.FT. OR 5.774 ACRES

TODD FARM EQUIPMENT, INC.
 (D.B.908, P.116)
 TAX PARCEL 29-82A
 GPIN: S06A-1206-2555

APPROVED:
 YORK COUNTY BOARD OF SUPERVISORS
 BY: *Al Maddalena*
 DATE: 7/15/03

STATE OF VIRGINIA
 COUNTY OF YORK
 IN THE CLERK'S OFFICE OF THE CIRCUIT COURT FOR THE COUNTY OF YORK, VIRGINIA, THE 16th DAY OF July, 2003, THIS PLAT WAS PRESENTED AND ADMITTED TO RECORD AS THE LAW DIRECTS AS INSTRUMENT NUMBER:
030021591 9:55am
 TESTE: *Lyn S Jenkins*
 CLERK
 BY: *Shelie Coan D.C.*
 DEPUTY CLERK
 PROPERTY IS ASSESSOR'S PARCEL 29-00-00-018
 GPIN: S06C-0684-2246