

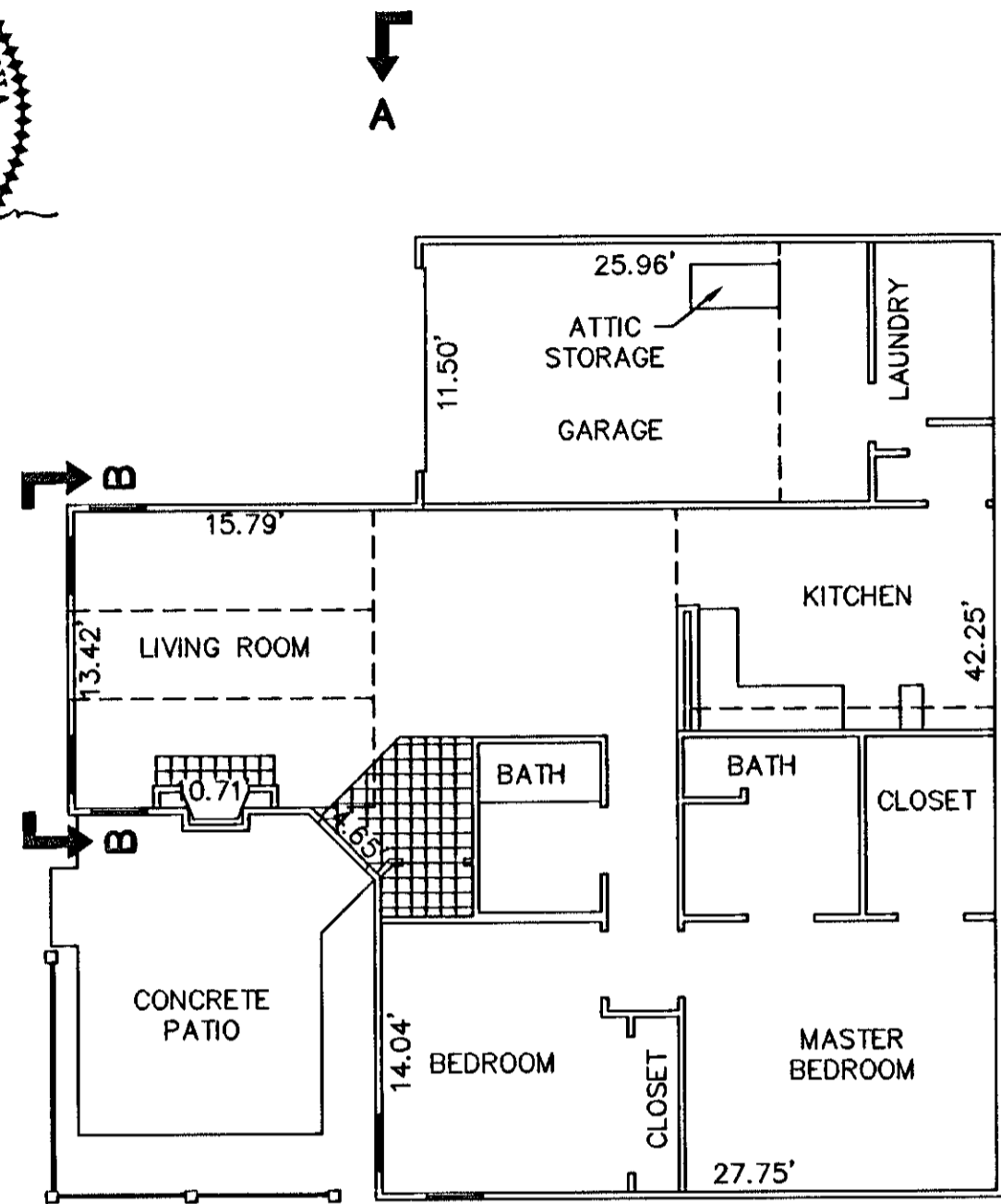
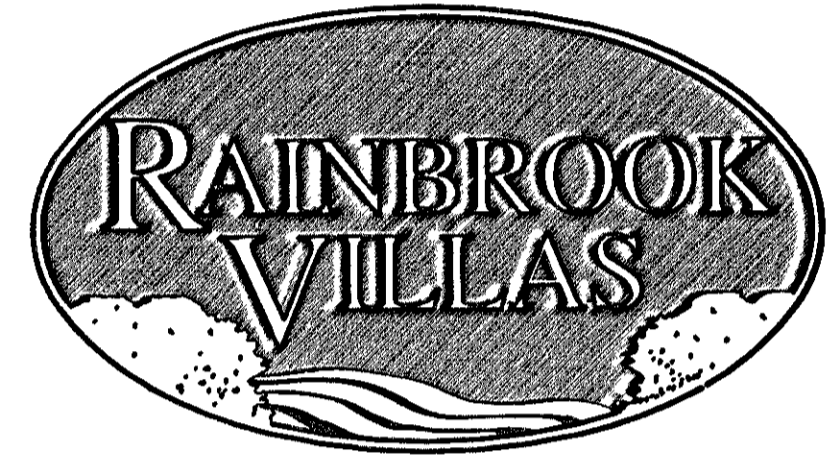
THE UNDERSIGNED CERTIFIES THAT THIS PLAN IS ACCURATE AND COMPLIES WITH THE PROVISIONS OF THE CODE OF VIRGINIA SECTION 55-79.58 (b) AND ALL UNITS DEPICTED HEREON HAVE BEEN SUBSTANTIALLY COMPLETED.

SIGNED: C.L. Pittman DATE: 7/9/2003
C.L. PITTMAN, P.E.

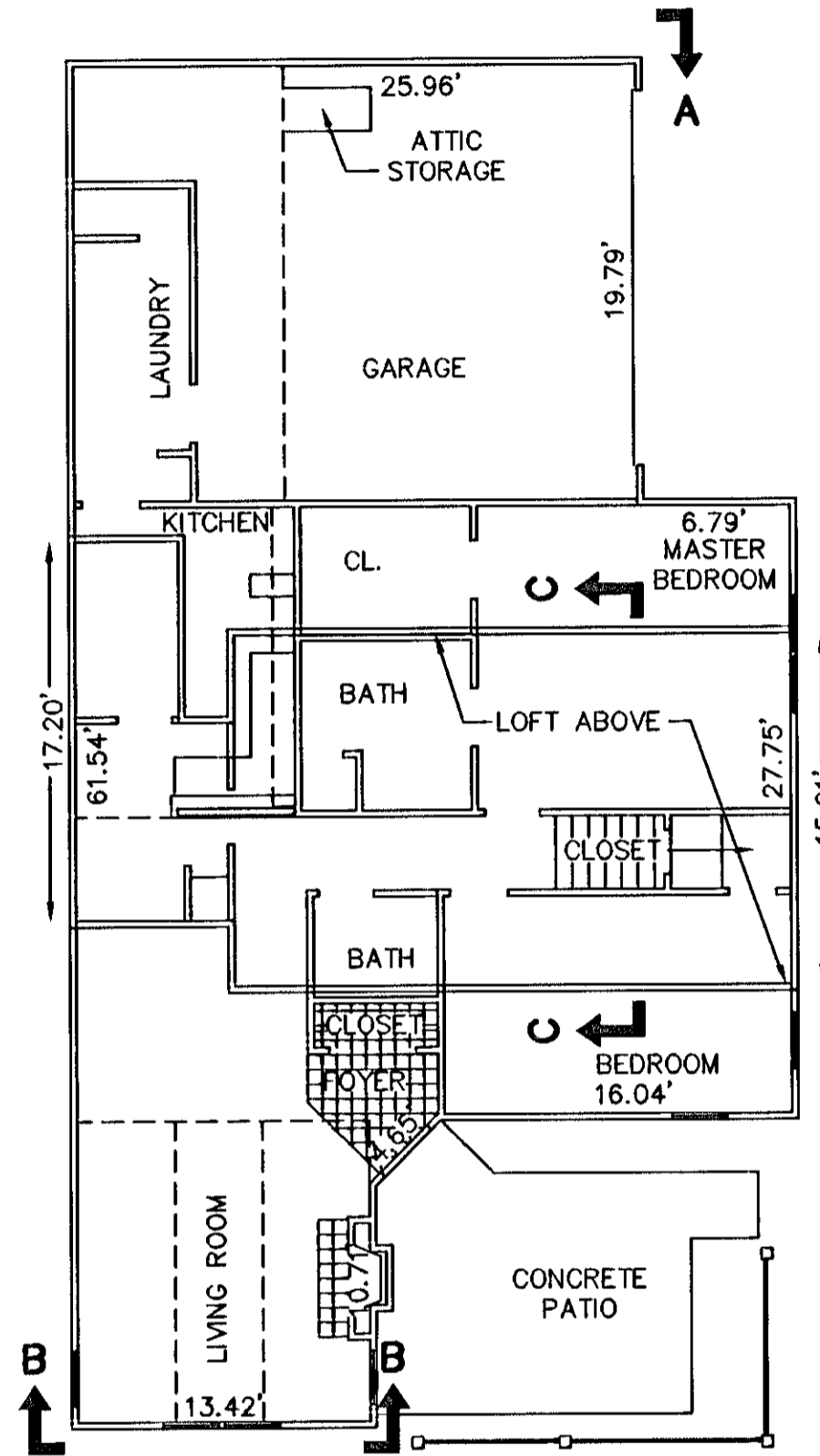


EXHIBIT "D"
PLAT OF
RAINBROOK VILLAS
A CONDOMINIUM
PHASE XX
SHEET 5 OF 5
GRAFTON DISTRICT - COUNTY OF YORK, VIRGINIA
SCALE: 1/8" = 1'-0" JUNE 4, 2003
0 4 8 16 24 32 FEET
GRAPHIC SCALE

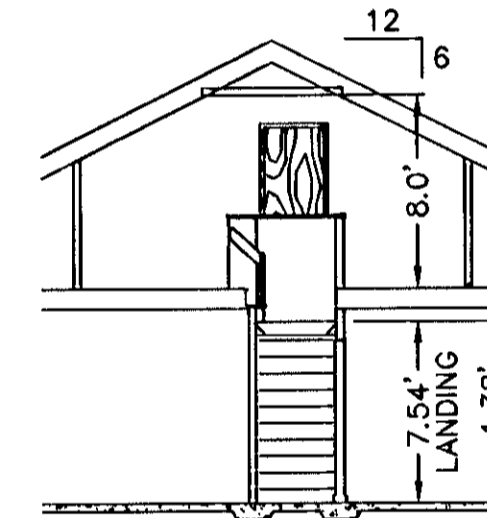
THE SIRINE GROUP, LTD.
SURVEYORS • ENGINEERS • PLANNERS
4794 GEORGE WASHINGTON MEMORIAL HIGHWAY
U.S. ROUTE 17
P.O. BOX 450
WHITE MARSH, VIRGINIA 23183



BUILDING 34-1, & 34-3 - VILLA
FLOOR PLAN
W/ CONCRETE PATIO



BUILDING 34-2, & 34-4 - CHATEAU
FLOOR PLAN
W/ CONCRETE PATIO



SECTION C-C
LOFT

APPROVED:
YORK COUNTY BOARD OF SUPERVISORS

BY: Al Maddalena

DATE: 7/15/03

NOTES:
1. ALL BUILDING DIMENSIONS SHOWN HEREON ARE INTERIOR DIMENSIONS AND ARE IN FEET.

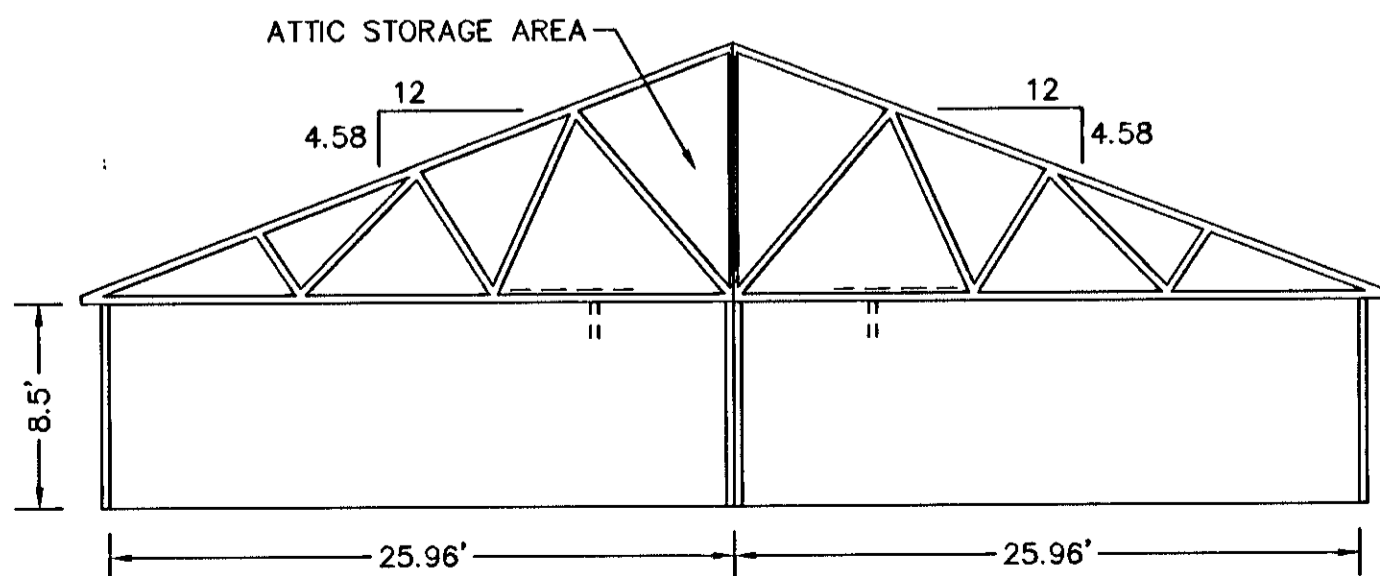
STATE OF VIRGINIA
COUNTY OF YORK

IN THE CLERK'S OFFICE OF THE CIRCUIT COURT FOR THE COUNTY OF YORK THE 16 DAY OF July, 2003, THIS PLAT WAS PRESENTED AND ADMITTED TO RECORD AS THE LAW DIRECTS IN PLAT BOOK _____, PAGE _____.

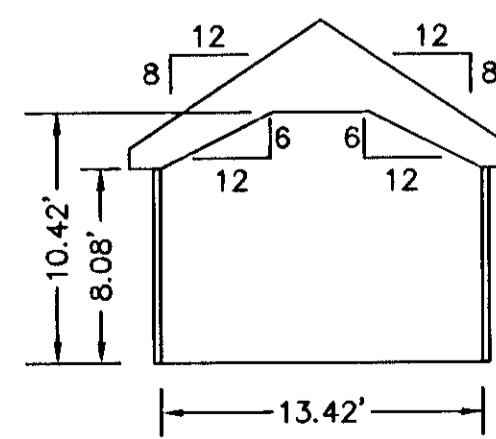
Inst # 030021691 9:55 am

TESTE: Lyn S. Jenkins
CLERK

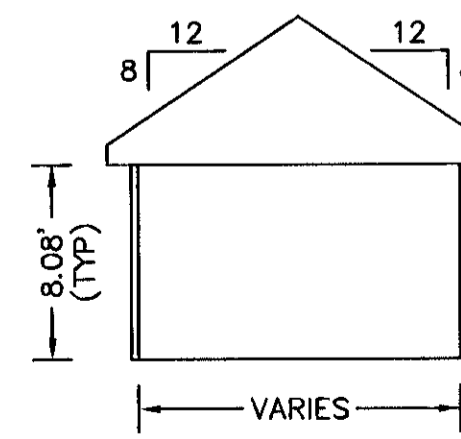
BY: Shelia Carson D.C.



SECTION A-A
GARAGE



SECTION B-B



TYPICAL
ROOM SECTION