

VICINITY MAP SCALE: 1" = 2000'

NOTE: PROPERTY LIES IN ZONE X, WHITE, (AREAS DETERMINED TO BE OUTSIDE 500-YEAR FLOOD PLAIN), AS SHOWN ON FLOOD INSURANCE RATE MAP FOR YORK COUNTY, VIRGINIA, COMM. NO. 510182 0036B, 12/16/88 AND COMM. NO. 510182 0037B, 12/16/88.

| NO. | RADIUS | DELTA | ARC | TANGENT | CHORD | CHORD BRG. |
|-----|----------|------------|---------|---------|---------|-------------|
| 1 | 950.00' | 15°24'33" | 255.49' | 128.52' | 254.72' | S04°35'23"E |
| 2 | 1006.00' | 11°02'41" | 193.92' | 97.26' | 193.62' | N06°46'19"W |
| 3 | 50.00' | 50°45'18" | 44.29' | 23.72' | 42.86' | N55°12'18"E |
| 4 | 150.00' | 38°43'45" | 101.39' | 52.72' | 99.47' | N61°13'04"E |
| 5 | 60.00' | 102°32'30" | 107.38' | 74.81' | 93.61' | N09°25'03"W |
| 6 | 150.00' | 38°43'45" | 101.39' | 52.72' | 99.47' | N80°03'10"W |
| 7 | 176.00' | 12°28'12" | 38.31' | 19.23' | 38.23' | N74°20'51"E |
| 8 | 224.00' | 01°45'06" | 6.85' | 3.42' | 6.85' | N68°59'18"E |
| 9 | 54.00' | 90°00'00" | 84.82' | 54.00' | 76.37' | N54°13'56"W |
| 10 | 20.00' | 81°37'46" | 28.49' | 17.27' | 26.14' | N50°13'56"W |
| 11 | 224.00' | 07°22'12" | 28.81' | 14.43' | 28.79' | N87°21'43"W |
| 12 | 300.00' | 15°23'32" | 80.59' | 40.54' | 80.35' | S88°37'37"W |
| 13 | 20.00' | 90°00'00" | 31.42' | 20.00' | 28.28' | S35°55'51"W |
| 14 | 15.00' | 90°00'00" | 23.56' | 15.00' | 21.21' | S54°04'09"E |
| 15 | 76.00' | 46°31'09" | 61.71' | 32.67' | 60.02' | S29°45'02"E |
| 16 | 76.00' | 16°42'46" | 22.17' | 11.16' | 22.09' | S61°21'59"E |
| 17 | 324.00' | 07°22'59" | 41.75' | 20.90' | 41.72' | S66°01'53"E |
| 18 | 100.00' | 66°34'40" | 116.20' | 65.66' | 109.77' | N39°46'52"W |
| 19 | 86.00' | 47°06'09" | 70.70' | 48.06' | 68.72' | N45°56'52"E |
| 20 | 10.00' | 90°00'00" | 15.71' | 10.00' | 14.14' | N54°15'39"W |

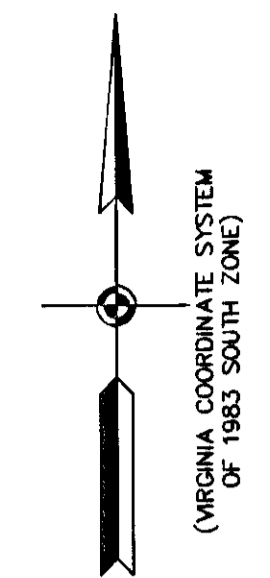
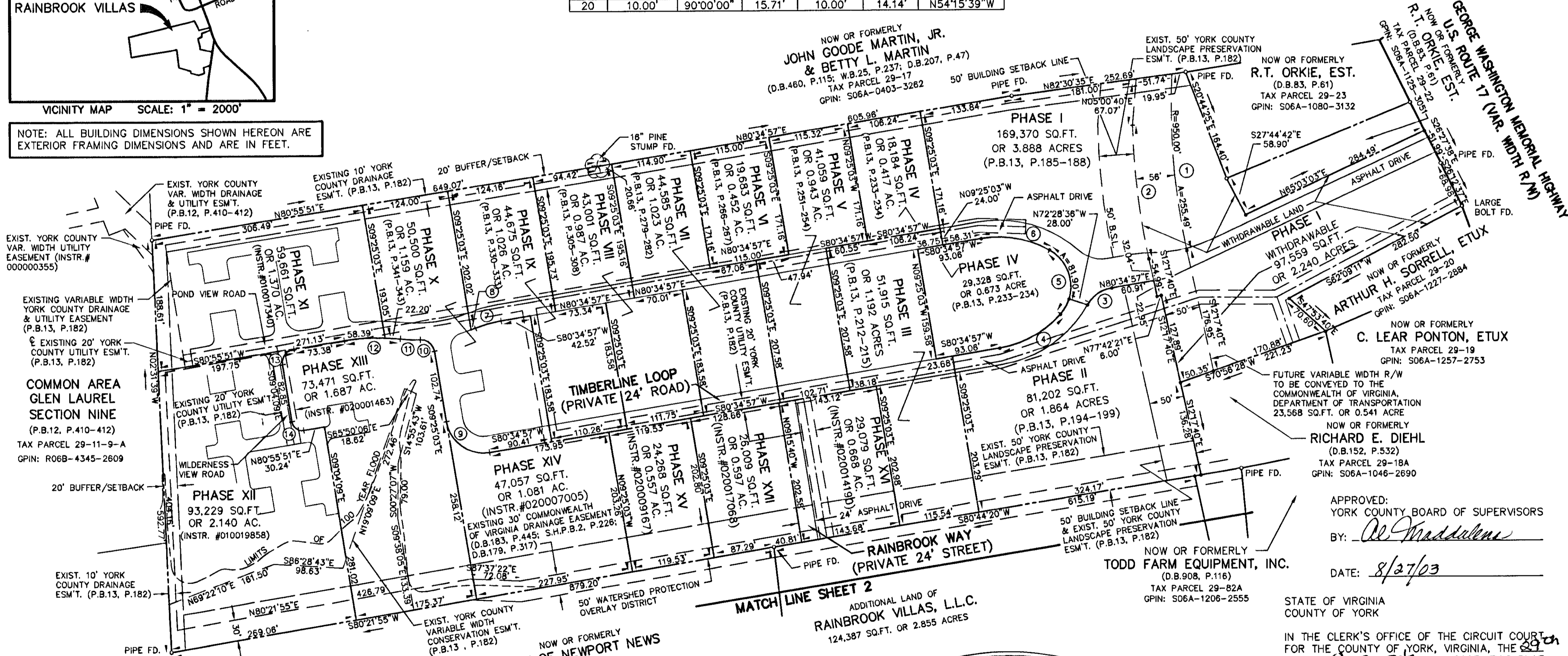


EXHIBIT "C"
 PLAT OF
RAINBROOK VILLAS
 A CONDOMINIUM
 PHASE XXII (INSTR.# 020005988)
 SHEET 1 OF 4
 GRAFTON DISTRICT - COUNTY OF YORK, VIRGINIA
 SCALE: 1" = 100' AUGUST 25, 2003
 0 50 100 200 300 400 FEET
 GRAPHIC SCALE

THE SIRINE GROUP, LTD.
 SURVEYORS • ENGINEERS • PLANNERS
 4794 GEORGE WASHINGTON MEMORIAL HIGHWAY
 U.S. ROUTE 17
 P.O. BOX 450
 WHITE MARSH, VIRGINIA 23183

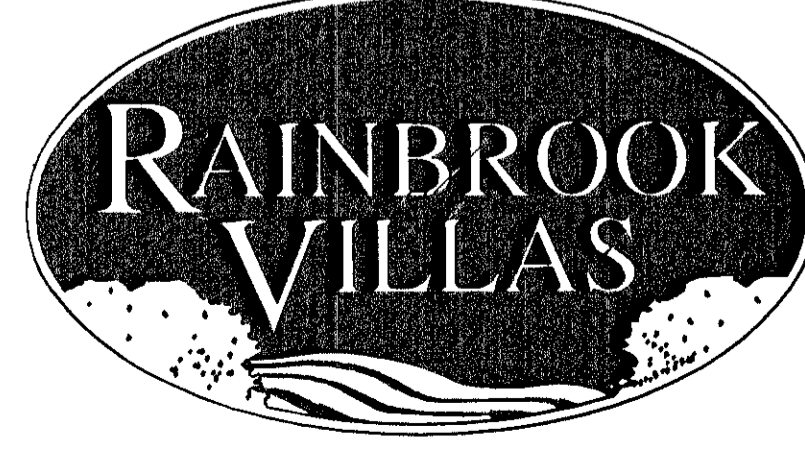
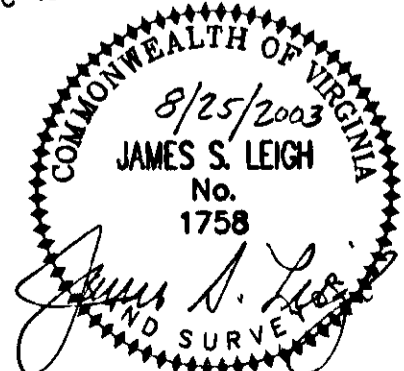
NOTE: ALL BUILDING DIMENSIONS SHOWN HEREON ARE EXTERIOR FRAMING DIMENSIONS AND ARE IN FEET.



UTILITY NOTES:
 WATER: EACH UNIT WITHIN THIS CONDOMINIUM IS SERVED BY PUBLIC WATER PROVIDED BY THE CITY OF NEWPORT NEWS.
 SEWER: EACH UNIT WITHIN THIS CONDOMINIUM IS SERVED BY PUBLIC SEWER PROVIDED BY THE COUNTY OF YORK AND H.R.S.D.

PHASE XXII AREA = 92,786 SQ.FT. OR 2.130 ACRES
 ADDITIONAL AREA = 124,387 SQ.FT. OR 2.855 ACRES
 TOTAL AREA = 1,393,622 SQ.FT. OR 31.993 ACRES

THIS PROPERTY IS SUBJECT TO COVENANTS, CONDITIONS, RESTRICTIONS, EASEMENTS, LIENS FOR ASSESSMENTS, OPTIONS, POWER OF ATTORNEYS, AND LIMITATIONS ON TITLE, CREATED BY THE VIRGINIA CONDOMINIUM STATUTE.



APPROVED:
 YORK COUNTY BOARD OF SUPERVISORS
 BY: *Al Maddalena*
 DATE: 8/27/03

STATE OF VIRGINIA
 COUNTY OF YORK
 IN THE CLERK'S OFFICE OF THE CIRCUIT COURT FOR THE COUNTY OF YORK, VIRGINIA, THE 29th DAY OF August, 2003, THIS PLAT WAS PRESENTED AND ADMITTED TO RECORD AS THE LAW DIRECTS AS INSTRUMENT NUMBER:
 030027966 10:46 am
 TESTE: *Lynn S. Jenkins* CLERK
 BY: *Debra Hughes* DEPUTY CLERK
 PROPERTY IS ASSESSOR'S PARCEL 29-00-00-018
 GPIN: S06C-0684-2246