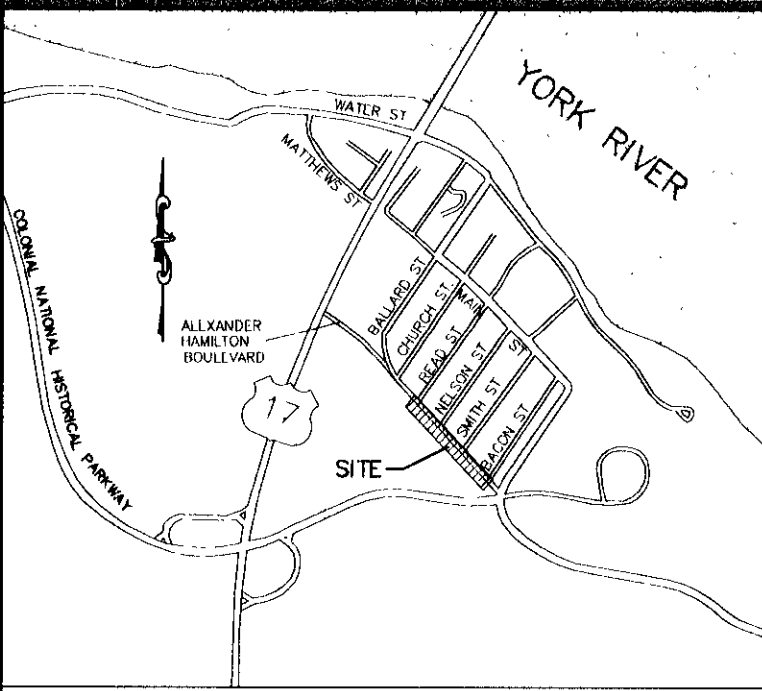


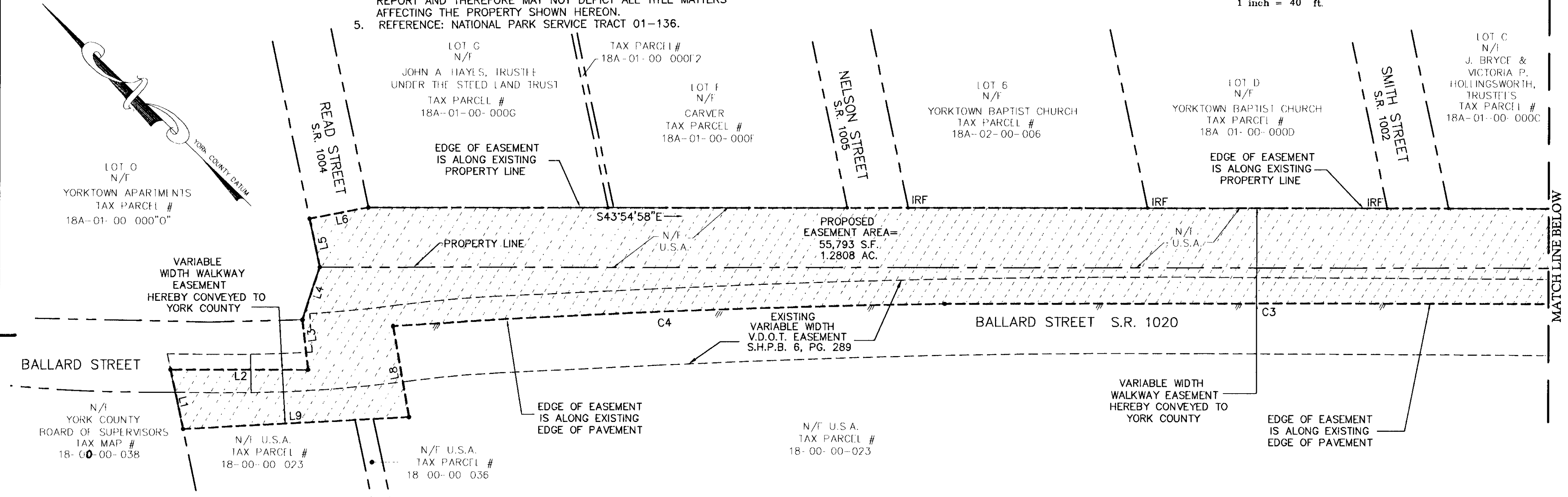
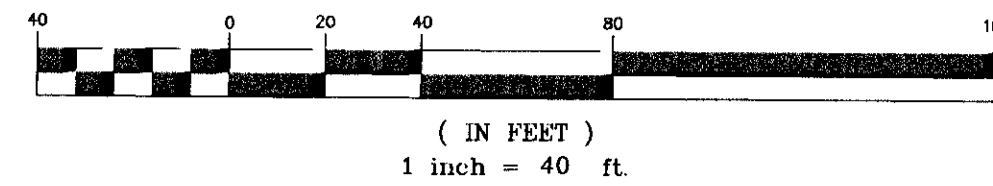
PLAT SHOWING AREA OF EASEMENT  
TO BE QUITCLAIMED FROM  
THE UNITED STATES OF AMERICA  
TO THE  
COUNTY OF YORK, VIRGINIA  
NELSON DISTRICT  
YORK COUNTY, VIRGINIA  
DATE: JULY 29, 2003 SCALE 1" = 40'



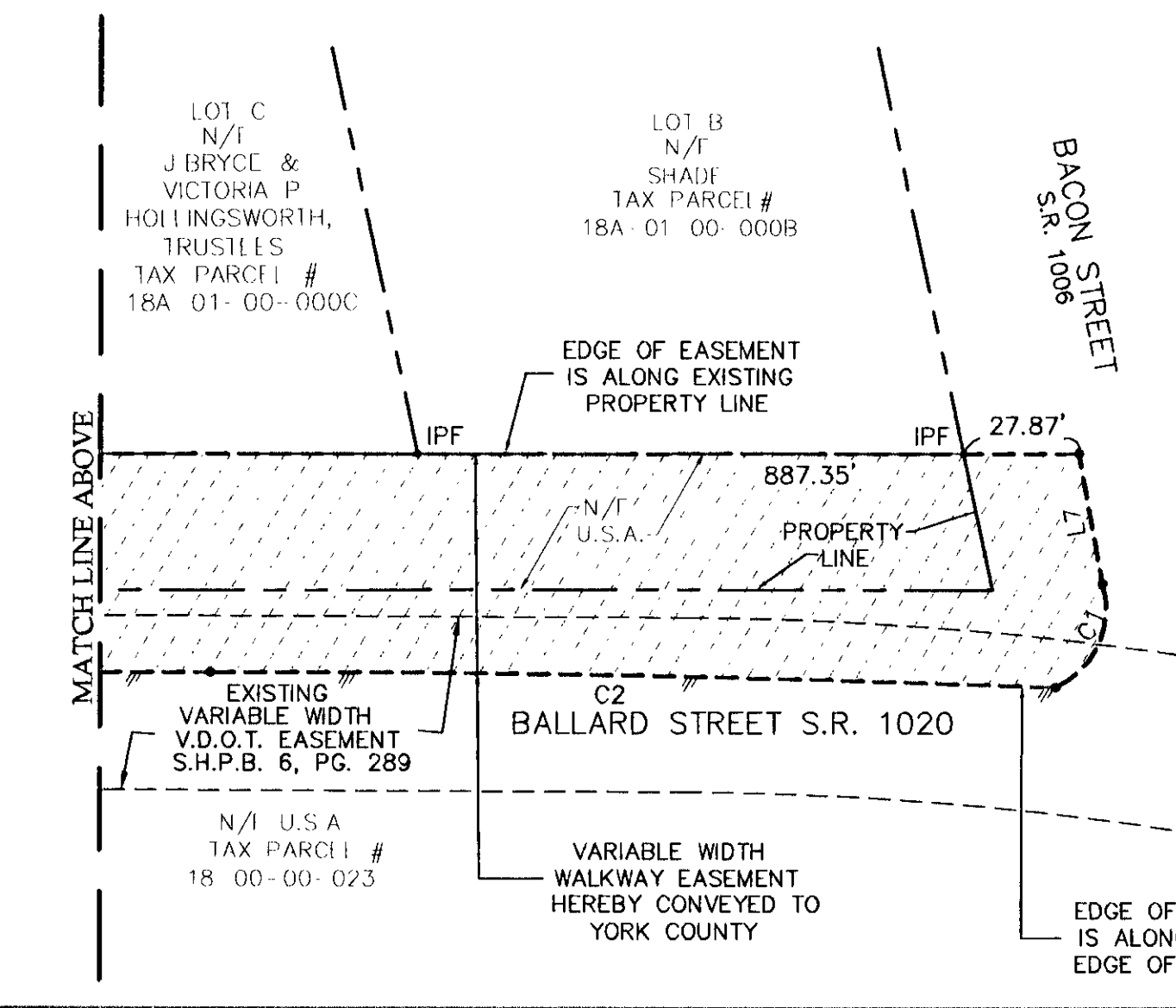
VICINITY MAP 1" = 2000'

- NOTES:
1. THE RECORDATION OF THIS PLAT SHALL OPERATE TO TRANSFER TO THE COUNTY OF YORK ANY EASEMENT INDICATED ON THE PLAT TO CREATE A PUBLIC RIGHT-OF-PASSAGE OVER THE SAME, UNLESS OTHERWISE NOTED ON THIS PLAT.
  2. EASEMENTS CONVEYED TO THE COUNTY BY RECORDATION OF THIS PLAT SHALL BE EXCLUSIVE TO THE COUNTY, UNLESS OTHERWISE NOTED. CONVEYANCE OF SUCH EASEMENTS TO THE COUNTY ALSO INCLUDE: (i) THE COUNTY'S RIGHT OF INGRESS AND EGRESS OVER THE OWNER'S LAND ADJACENT TO THE EASEMENT AS NECESSARY TO INSPECT, MAINTAIN AND OPERATE THE COUNTY'S FACILITIES WITHIN THE EASEMENT AND (ii) THE RIGHT OF THE COUNTY TO ASSIGN TO OTHERS, FROM TIME TO TIME, THE RIGHT TO LOCATE FACILITIES THEREIN SERVING THE PUBLIC, INCLUDING, BUT NOT LIMITED TO, WATER, ELECTRIC, TELEPHONE, COMMUNICATIONS, AND GAS UTILITY FACILITIES.
  3. BEARINGS SHOWN ON THIS PLAT DO NOT NECESSARILY REFLECT BEARINGS SHOWN ON PLATS OF RECORD, BUT ARE BASED ON COUNTY OF YORK, VA 1989 HORIZONTAL CONTROL MONUMENTATION. (VA STATE PLANE COORDINATES-SOUTH ZONE-NAD 1983), AS PER COUNTY OF YORK SUBDIVISION ORDINANCE 20.5-57.
  4. THIS PLAT WAS PREPARED WITHOUT THE BENEFIT OF A TITLE REPORT AND THEREFORE MAY NOT DEPICT ALL TITLE MATTERS AFFECTING THE PROPERTY SHOWN HEREON.
  5. REFERENCE: NATIONAL PARK SERVICE TRACT 01-136.

GRAPHIC SCALE



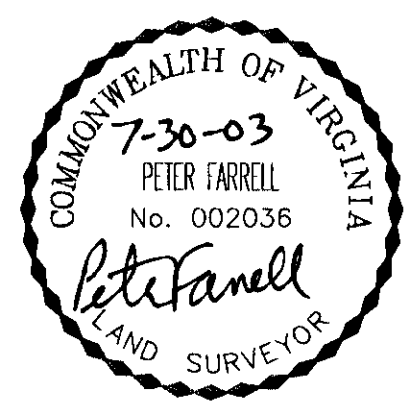
2003 SEP -5 PM 2:28



LINE TABLE		
LINE	LENGTH	BEARING
L1	33.43'	N34°01'25"E
L2	75.79'	S43°50'12"E
L3	27.52'	N39°25'56"E
L4	30.65'	N64°09'43"E
L5	27.34'	N34°05'02"E
L6	33.01'	S54°50'02"E
L7	32.07'	S35°47'47"W
L8	50.69'	S36°01'54"W
L9	124.61'	N46°59'45"W

CURVE TABLE						
CURVE	RADIUS	LENGTH	TANGENT	CHORD	CHORD BEARING	DELTA
C1	20.67'	29.84'	18.19'	27.32'	S70°27'57"W	82°42'17"
C2	4843.12'	204.28'	102.16'	204.27'	N42°52'17"W	2°25'00"
C3	62920.57'	359.57'	179.78'	359.57'	N43°58'08"W	0°19'39"
C4	5628.46'	304.57'	152.32'	304.53'	N46°15'11"W	3°06'01"

APPROVED:  
YORK COUNTY BOARD OF SUPERVISORS  
BY: Al. Maddalena  
PLAT APPROVING AGENT  
DATE: 8/21/03



STATE OF VIRGINIA  
COUNTY OF YORK  
IN THE CLERK'S OFFICE OF THE CIRCUIT COURT FOR THE COUNTY OF YORK THE 5th DAY OF September 2003 THIS MAP WAS PRESENTED AND ADMITTED TO RECORD AS THE LAW DIRECTS AS INSTRUMENT NO. 030028639  
TESTE: Lynn S. Jenkins  
CLERK  
by: Lisa Brogden, D.C.  
DATE: \_\_\_\_\_