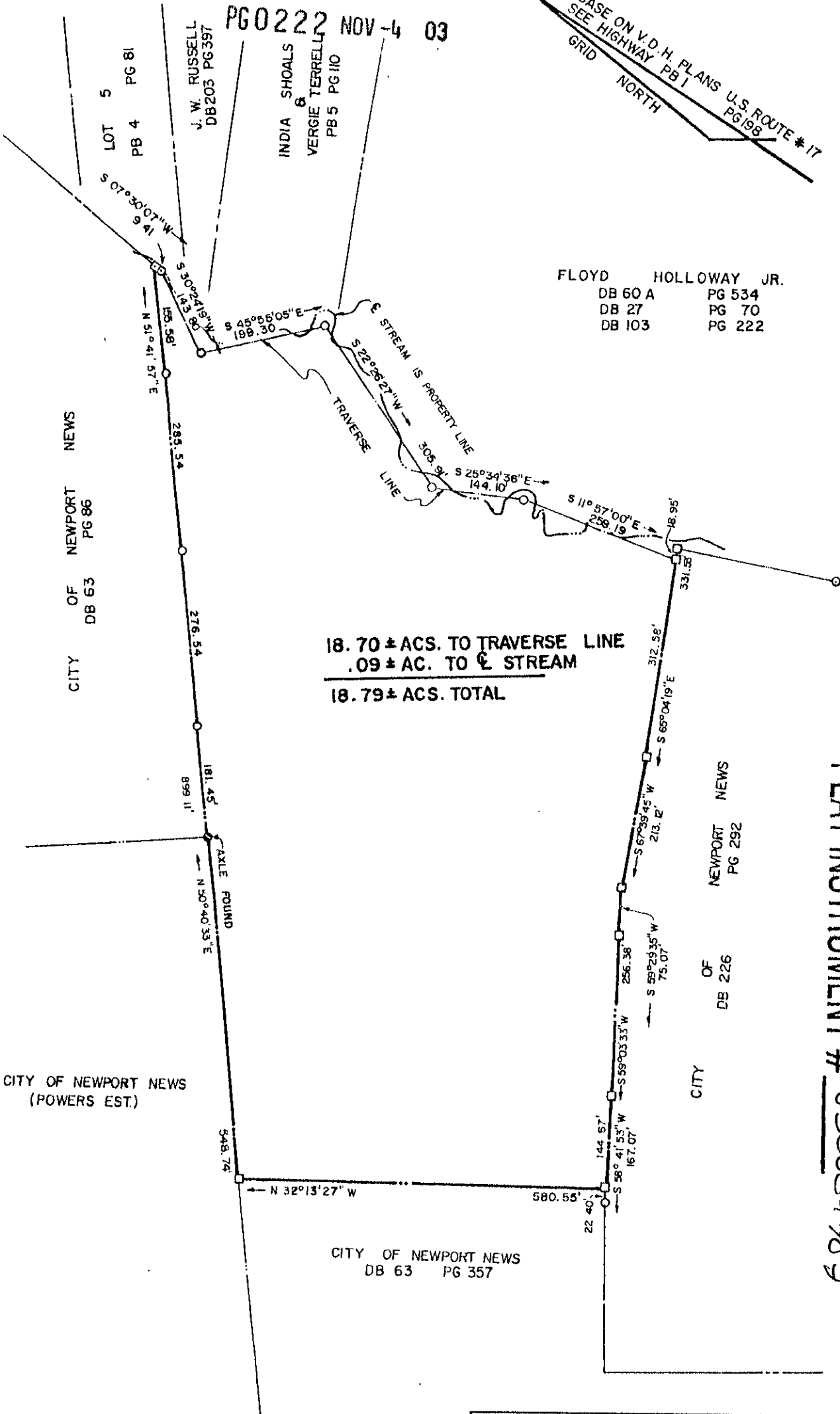


PG0222 NOV-4 03

BASE ON V.D.H. PLANS U.S. ROUTE # 17  
SEE HIGHWAY PB 1 PG 198  
GRID NORTH



PLAT INSTRUMENT # 030034787

*Hugh C. Dischinger*  
HUGH C. DISCHINGER P.E. & C.L.S.

PLAT OF PROPERTY OF	
<b>THOMAS D. WOOD ESTATE</b>	
GRAFTON DISTRICT YORK COUNTY, VIRGINIA	
Murray & Dischinger — Engineers Newport News & Hampton, Virginia	
Scale: 1" = 200'	Revisions:
Date: MARCH 11, 1975	
Job No. 68-10-1078	