

**SUBDIVISION OF
THE PROPERTY OF THE
COLONIAL WILLIAMSBURG
FOUNDATION**
Bruton Magisterial District
County of York, Virginia

DATE: 7/11/03 SHEET 2 OF 2 SCALE: 1"=50'

PROJECT No.: 31531 DRAWN BY: RWP

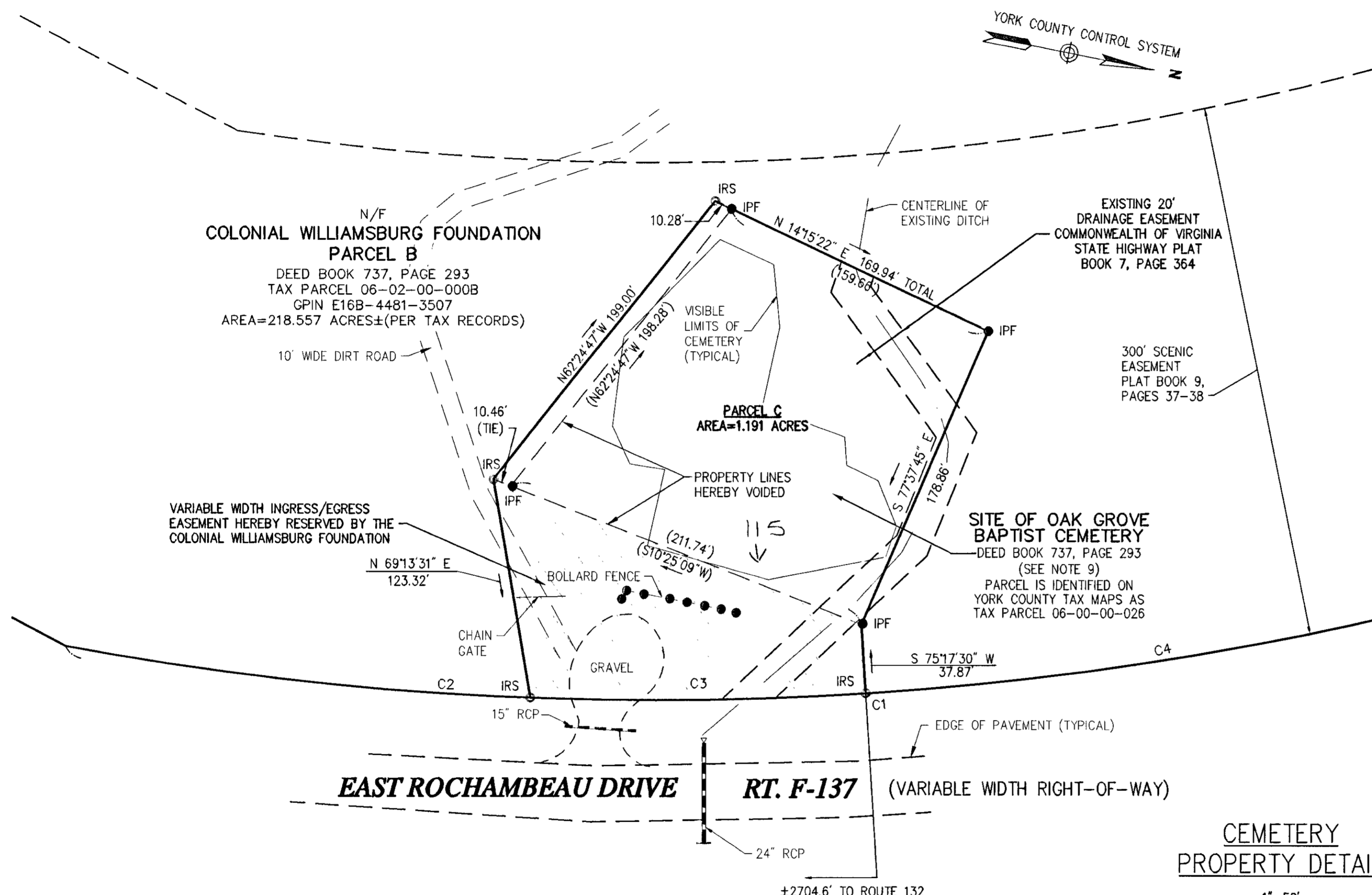
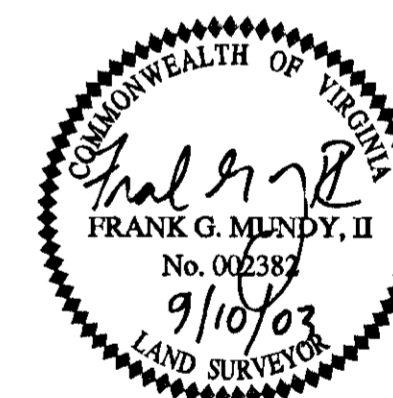
VHIB Vanasse Hangen Brustlin, Inc.
Transportation Land Development Environmental Services
477 McLaws Circle, Suite 1
Williamsburg, Virginia 23185
(757) 220-0500 • FAX (757) 220-8544

REVISED 9/10/03



LEGEND

- IPF IRON PIPE FOUND
- IRS IRON ROD SET
- CMF CONCRETE MONUMENT FOUND
- ▬ RCP REINFORCED CONCRETE PIPE
- ▨ INGRESS/EGRESS EASEMENT



CURVE TABLE						
CURVE	DELTA	RADIUS	LENGTH	TANGENT	CH BEARING	CHORD
C1	30°58'23"	1849.86'	1000.00'	512.54'	N16°13'17"W	987.87'
C2	8°08'10"	1849.86'	262.68'	131.56'	N04°48'11"W	262.46'
C3	5°50'15"	1849.86'	188.47'	94.32'	N11°47'23"W	188.39'
C4	16°59'58"	1849.86'	548.85'	276.46'	N23°12'30"W	546.84'

**CEMETERY
PROPERTY DETAIL**
1"=50'

APPROVED:
YORK COUNTY BOARD OF SUPERVISORS
BY: Al Maddalena
PLAT APPROVING AGENT

DATE: 11/24/03

**STATE OF VIRGINIA
COUNTY OF YORK**

IN THE CLERK'S OFFICE OF THE CIRCUIT COURT FOR THE COUNTY OF YORK, THE 25th DAY OF Nov, 2003 THIS MAP WAS PRESENTED AND ADMITTED TO RECORD AS THE LAW DIRECTS AS INSTRUMENT NO. 030037183
10:24 am

TESTE: Lynn S Jenkins
CLERK

BY: Amelia Corcoran