

PLAT SHOWING
CONSERVATION EASEMENTS
LOCATED WITHIN

**KING PROPERTY
APARTMENTS**

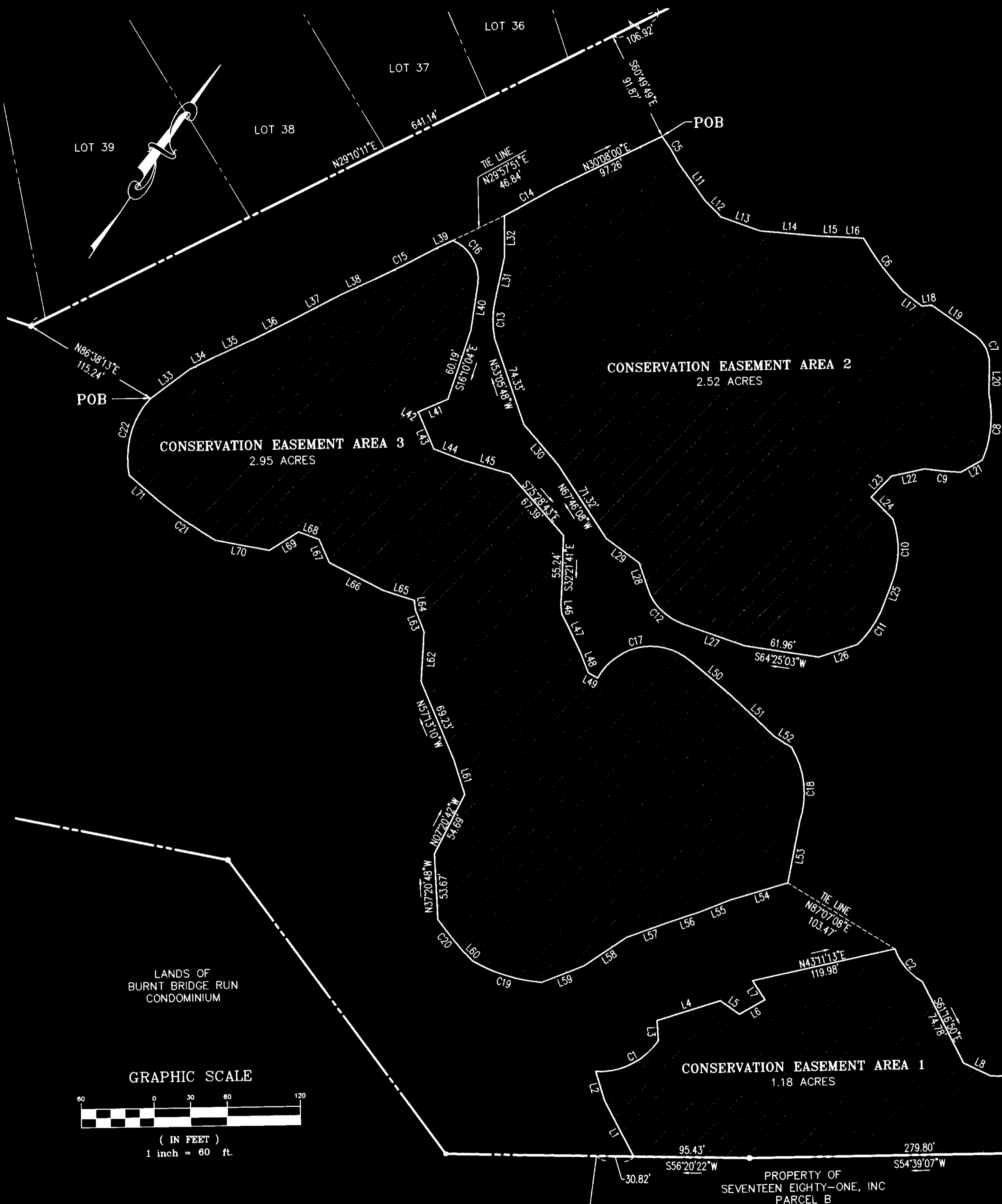
NELSON MAGISTERIAL DISTRICT
COUNTY OF YORK, VIRGINIA



DATE: 9/11/01 SHEET 2 OF 2 SCALE: 1" = 60'

PROJECT NO: 30969.00 DRAWN BY: DWP

VHIB *Vanessa Hengen Brustin, Inc.*
Transportation Land Development Environmental Services
11832 Rock Landing Drive, Suite 203
Newport News, Virginia 23606-4231
(757) 873-3386 • FAX (757) 873-0737



CONSERVATION EASEMENT AREA 2
2.52 ACRES

CONSERVATION EASEMENT AREA 3
2.95 ACRES

CONSERVATION EASEMENT AREA 1
1.18 ACRES

LINE	BEARING	LENGTH
L1	N62°15'45"W	51.73'
L2	N51°22'39"W	25.03'
L3	N37°40'22"W	16.52'
L4	N38°16'40"E	54.51'
L5	S89°05'18"E	19.27'
L6	N25°59'07"E	24.30'
L7	N67°47'32"W	18.81'
L8	N80°59'37"E	25.09'
L9	N78°46'31"E	8.78'
L10	N68°26'55"E	25.26'
L11	S69°38'10"E	36.76'
L12	S79°13'20"E	18.51'
L13	N75°19'22"E	34.07'
L14	N60°50'32"E	48.90'
L15	N57°32'07"E	18.18'
L16	N59°14'07"E	18.37'
L17	S86°50'12"E	20.58'
L18	N48°43'57"E	7.80'
L19	S89°23'35"E	40.36'
L20	S33°28'17"E	24.34'
L21	S26°10'00"W	20.76'
L22	S43°22'42"W	28.19'
L23	S09°20'24"W	23.96'
L24	S79°11'40"E	25.18'
L25	S15°05'15"E	22.38'
L26	S37°30'30"W	33.09'
L27	S74°59'11"W	51.92'
L28	N53°09'09"W	21.47'
L29	N87°49'16"W	34.15'
L30	N75°24'47"W	43.52'
L31	N21°56'29"W	35.74'
L32	N34°34'46"W	33.75'
L33	N18°59'01"E	40.03'
L34	N28°58'45"E	22.26'
L35	N30°59'52"E	34.40'
L36	N28°57'29"E	38.26'

LINE	BEARING	LENGTH
L37	N28°16'50"E	41.55'
L38	N31°11'16"E	32.09'
L39	N30°27'51"E	16.88'
L40	S25°57'51"E	38.80'
L41	S32°35'58"W	27.17'
L42	S82°57'06"E	1.14'
L43	S57°27'58"E	31.64'
L44	N76°12'31"E	24.87'
L45	N71°13'21"E	40.69'
L46	S38°39'54"E	9.85'
L47	S59°49'28"E	33.80'
L48	S56°03'09"E	19.23'
L49	N83°11'52"E	8.93'
L50	S83°59'05"E	44.58'
L51	S81°14'56"E	47.38'
L52	N88°24'31"E	17.69'
L53	S23°29'37"E	51.22'
L54	S39°21'51"W	49.97'
L55	S34°08'45"W	26.53'
L56	S37°10'27"W	26.08'
L57	S36°15'37"W	37.55'
L58	S21°56'00"W	42.37'
L59	S34°26'38"W	37.34'
L60	N79°29'22"W	10.34'
L61	N51°36'25"W	29.55'
L62	N31°18'27"W	41.08'
L63	N54°40'44"W	19.01'
L64	N42°49'01"W	8.59'
L65	S73°34'20"W	26.05'
L66	S82°54'36"W	50.97'
L67	N58°02'22"W	20.88'
L68	S75°17'54"W	18.17'
L69	S23°23'56"W	28.31'
L70	S66°07'35"W	44.50'
L71	N83°34'42"W	30.61'

LANDS OF
BURNT BRIDGE RUN
CONDOMINIUM

PROPERTY OF
SEVENTEEN EIGHTY-ONE, INC
PARCEL B

GRAPHIC SCALE



(IN FEET)
1 inch = 60 ft.