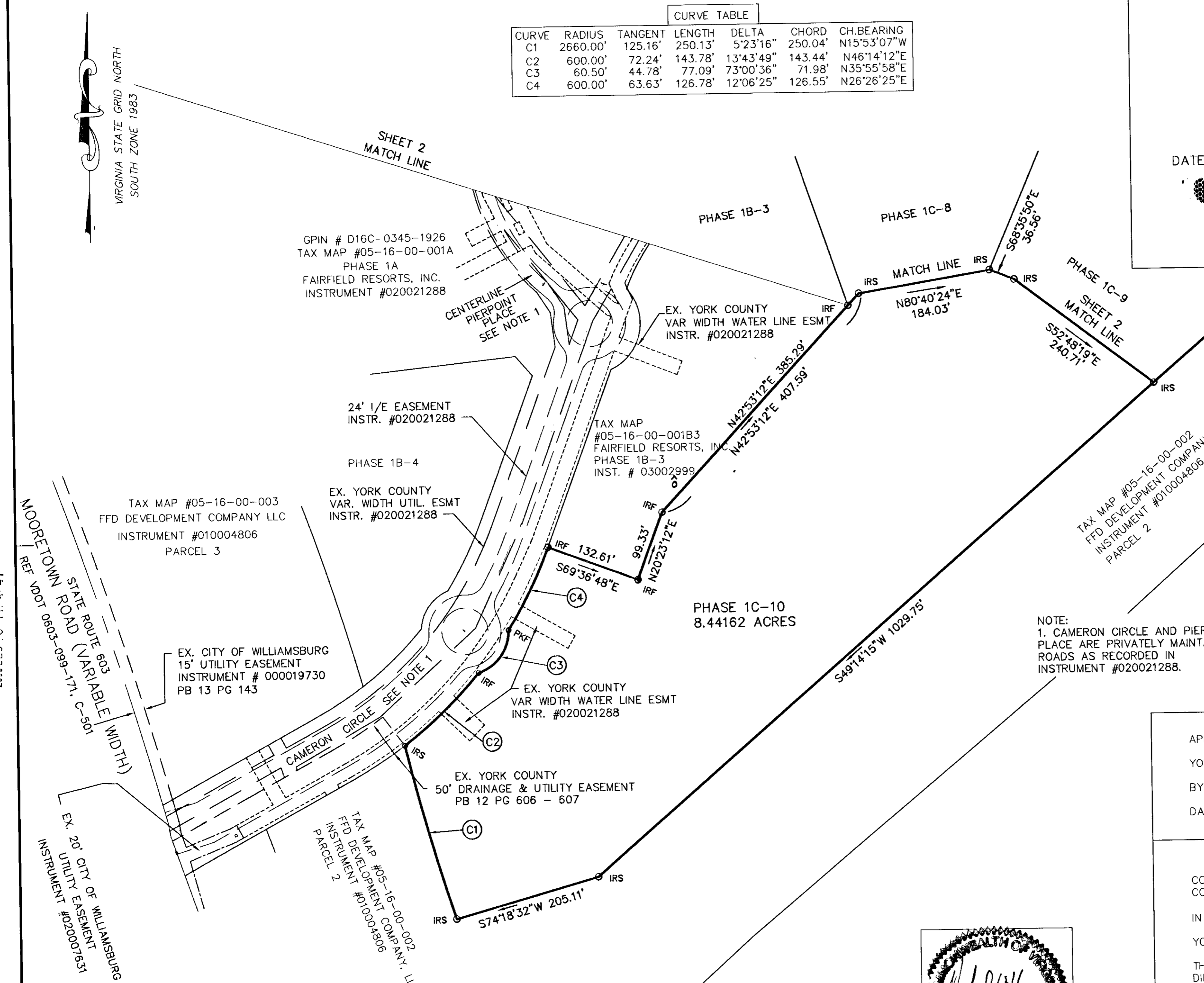


PLAT OF SUBDIVISION
 PHASE 1C
 FAIRFIELD WILLIAMSBURG @
 GOVERNOR'S GREEN

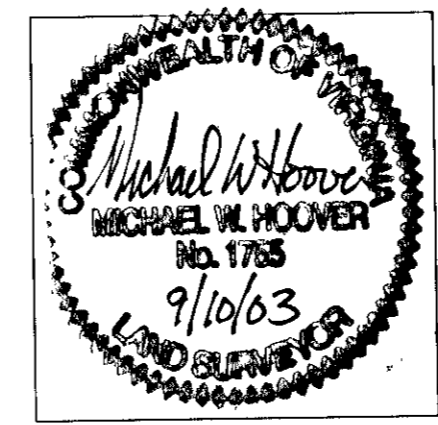
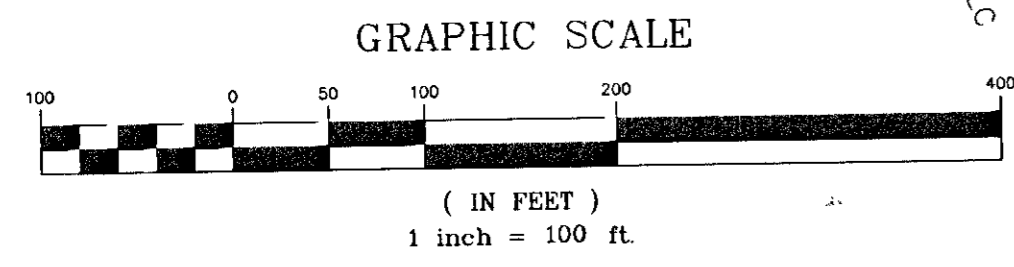
BRUTON DISTRICT YORK COUNTY, VIRGINIA
 SCALE 1"=100'
 DATE: APRIL 23, 2003 LAST REVISED SEPT 10, 2003

Dewberry & Davis, Inc.
 A Dewberry Company
 Architects Engineers Planners Surveyors
 9881 MAYLAND DRIVE, SUITE 201
 RICHMOND, VA 23233 PHONE 804 290-7957, FAX 804 290-7928

CURVE TABLE						
CURVE	RADIUS	TANGENT	LENGTH	DELTA	CHORD	CH. BEARING
C1	2660.00'	125.16'	250.13'	5°23'16"	250.04'	N15°53'07"W
C2	600.00'	72.24'	143.78'	13°43'49"	143.44'	N46°14'12"E
C3	60.50'	44.78'	77.09'	73°00'36"	71.98'	N35°55'58"E
C4	600.00'	63.63'	126.78'	12°06'25"	126.55'	N26°26'25"E



NOTE:
 1. CAMERON CIRCLE AND PIERPOINT PLACE ARE PRIVATELY MAINTAINED ROADS AS RECORDED IN INSTRUMENT #020021288.



APPROVED:
 YORK COUNTY BOARD OF SUPERVISORS
 BY: Al. Maddalena PLAT APPROVING AGENT.
 DATE: 12/4/2003

COMMONWEALTH OF VIRGINIA
 COUNTY OF YORK
 IN THE CLERK'S OFFICE OF THE CIRCUIT COURT FOR THE COUNTY OF YORK THE 15th DAY OF December, 2003. 4:41 pm
 THIS MAP WAS PRESENTED AND ADMITTED TO RECORD AS THE LAW DIRECTS.
 INSTRUMENT NO. 020029198
 TESTE: Lynn S. Jenkins CLERK
 BY: K. Renee Condon D.C.