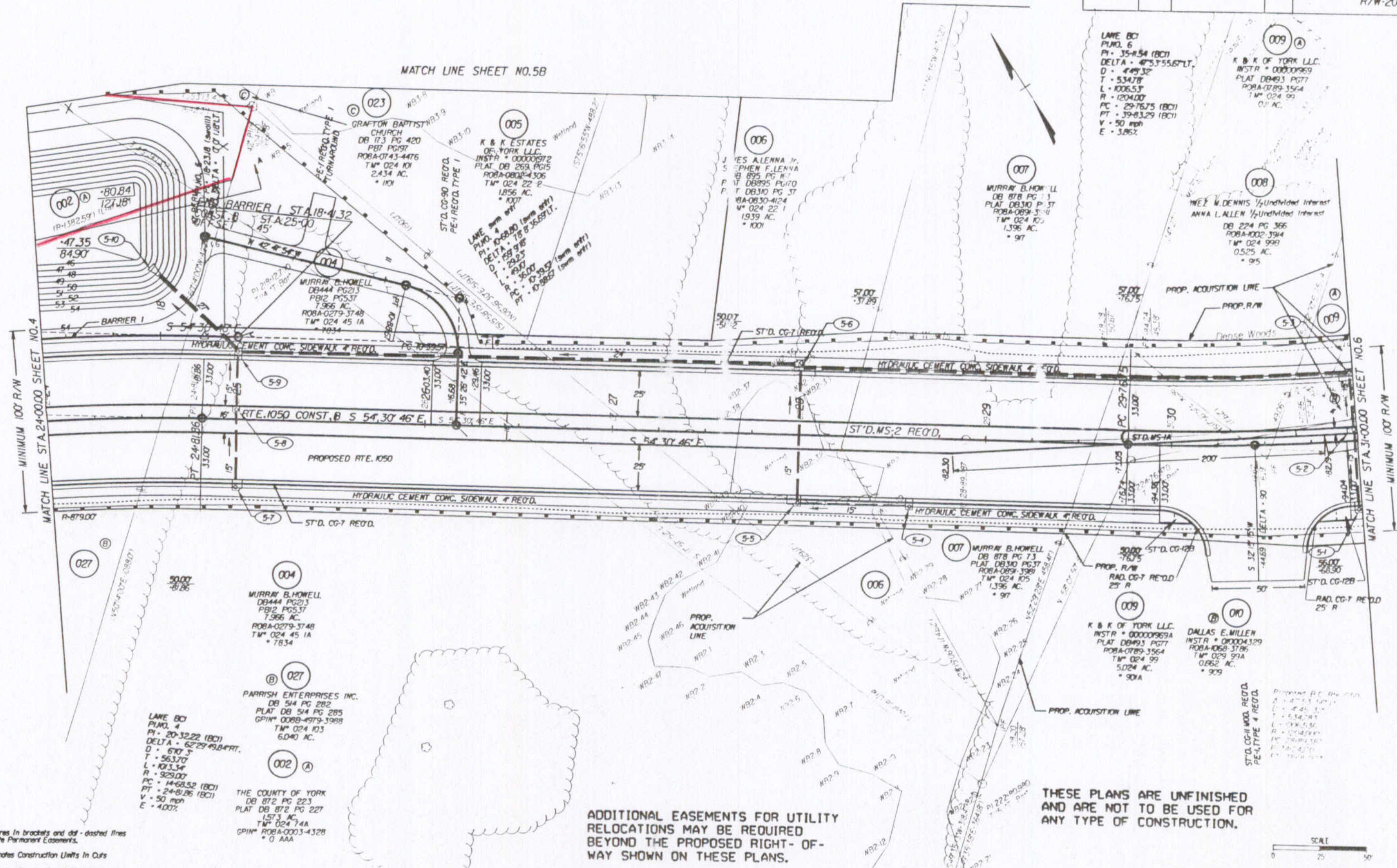


Design File: c:\documents of ms_jacobs\ref\4627\4627005.dgn Ref. File: c:\documents of ms_jacobs\ref\4627.dgn Levels On: 1-50,52-63
 Ref. File: c:\documents of ms_jacobs\ref\4627.dgn Levels On: 1-63
 Ref. File: c:\documents of ms_jacobs\ref\4627.dgn Levels On: 1-63
 Ref. File: c:\documents of ms_jacobs\ref\4627.dgn Levels On: 1-63
 Ref. File: c:\documents of ms_jacobs\ref\4627.dgn Levels On: 1-63
 Ref. File: c:\documents of ms_jacobs\ref\4627.dgn Levels On: 1-63

SURVEYED BY: ROBERT D. HARRIS
 SUPERVISED BY: SONJA HALLUMS-PONTON (757) 925-2560
 DESIGNED BY: J. DIANE GEORGE (757) 925-3622
 HAMPTON ROADS DISTRICT DESIGN UNIT

DESIGN FEATURES RELATING TO CONSTRUCTION OR TO REGULATION AND CONTROL OF TRAFFIC MAY BE SUBJECT TO CHANGE AS DEEMED NECESSARY BY THE DEPARTMENT

REVISED	STATE	FEDERAL AID PROJECT	ROUTE	PROJECT	SHEET NO.
10-14-04 10-18-04 10-22-04	VA		1050	1050-099-180, C-501 R/W-201	5



THESE PLANS ARE UNFINISHED AND ARE NOT TO BE USED FOR ANY TYPE OF CONSTRUCTION.

ADDITIONAL EASEMENTS FOR UTILITY RELOCATIONS MAY BE REQUIRED BEYOND THE PROPOSED RIGHT-OF-WAY SHOWN ON THESE PLANS.

Note: Figures in brackets and dot-dashed lines denote Permanent Easements.
 [C] Denotes Construction Limits in Cuts
 [E] Denotes Construction Limits in Fills
 NOTE: SEE GENERAL NOTES FOR E&S LEGEND



PLAN NO.	PROJECT	FILE NO.	SHEET NO.
	1050-099-180		5

10/26/2004 08:40:02