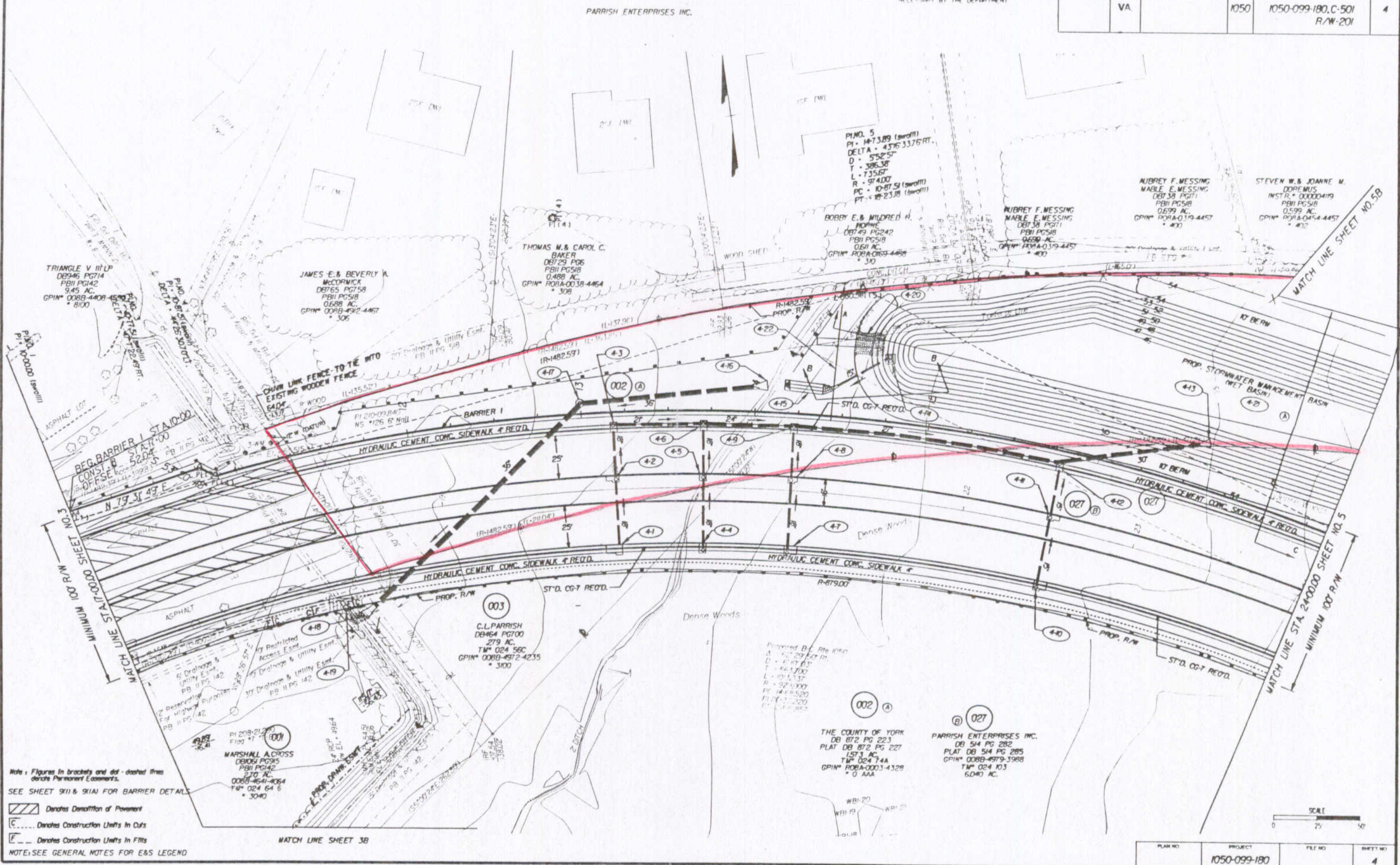


Design File: c:\documents\ms_jacob\va\4527\4527004.dgn Ref. File: c:\documents\ms_jacob\va\4527\4527004.dgn Levels On: 1-5052-63
 Ref. File: c:\documents\ms_jacob\va\4527\4527004.dgn Levels On: 1-5355-63
 Ref. File: c:\documents\ms_jacob\va\4527\4527004.dgn Levels On: 1-63
 Ref. File: c:\documents\ms_jacob\va\4527\4527004.dgn Levels On: 1-63
 Ref. File: c:\documents\ms_jacob\va\4527\4527004.dgn Levels On: 1-63

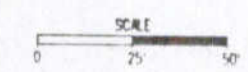
SURVEYED BY: BOBRO, UHARMOR
 SUPERVISED BY: SONTA HALLUMS-PONTON (757) 925-2560
 DESIGNED BY: J. DIANE GEORGE (757) 925-3524
 HAMPTON ROADS DISTRICT DESIGN UNIT

DESIGN FEATURES RELATING TO CONSTRUCTION OR TO REGULATION AND CONTROL OF TRAFFIC MAY BE SUBJECT TO CHANGE AS DEEMED NECESSARY BY THE DEPARTMENT

REVISED	STATE	FEDERAL AID PROJECT	ROUTE	STATE PROJECT	SHEET NO.
10-18-04	VA		1050	1050-099-180, C-501 R/W-201	4



Note: Figures in brackets and dot-dashed lines denote Permanent Elements.
 SEE SHEET 9111 & 91A1 FOR BARRIER DETAILS
 [Hatched Area] Denotes Demarcation of Pavement
 [C] Denotes Construction Units in Cuts
 [E] Denotes Construction Units in Fills
 NOTE: SEE GENERAL NOTES FOR E&S LEGEND



PLAN NO.	PROJECT	FILE NO.	SHEET NO.
	1050-099-180		4