

Design File - c:\documents\ms_jacob\4627\414627003.dgn Ref. File - c:\documents\ms_jacob\4627\414627.dgn Levels On - 150.52-63
 Ref. File - c:\documents\ms_jacob\4627\414627.dgn Levels On - 1-30.32-50.52-59.61-63
 Ref. File - c:\documents\ms_jacob\4627\414627.dgn Levels On - 1-63
 Ref. File - c:\documents\ms_jacob\4627\414627.dgn Levels On - 1-63
 Ref. File - c:\documents\ms_jacob\4627\414627.dgn Levels On - 12.4-60.52-63
 Ref. File - c:\documents\ms_jacob\4627\414627.dgn Levels On - 1-63
 Ref. File - c:\documents\ms_jacob\4627\414627.dgn Levels On - 1-63

SURVEYED BY: ROBERT D. HARRON
 SUPERVISED BY: SONIA HALLUMS-PONTON (757) 925-2580
 DESIGNED BY: J. DIXIE GEORGE (757) 925-3624
 HAMPTON ROADS DISTRICT DESIGN UNIT

Power Lines Property of:
 Dominion Virginia Power
 1600 Hamilton Ave.
 Portsmouth, VA 23707-3528

Power Transmission Lines
 Property of:
 Dominion Virginia
 Power Transmission
 2400 Grayland Ave.
 Richmond, VA 23220-5260

Telephone Lines Property of:
 Verizon Virginia, Inc.
 5701 Cleveland St., 5th Floor
 Virginia Beach, VA 23462

Natural Gas (Distribution)
 Property of:
 Virginia Natural Gas
 5000 E. Virginia Beach Blvd.
 Norfolk, VA 23502

Cable TV Lines Property of:
 Cox Communications
 1323 W. Pambrake Ave.
 Hampton, VA 23661

Natural Gas (Transmission)
 Property of:
 Colonial Pipeline Co.
 2607 Willard Rd.
 Richmond, VA 23294

Water Lines Property of:
 City of Newport News
 Waterworks
 425 Industrial Park Dr.
 Newport News, VA 23608

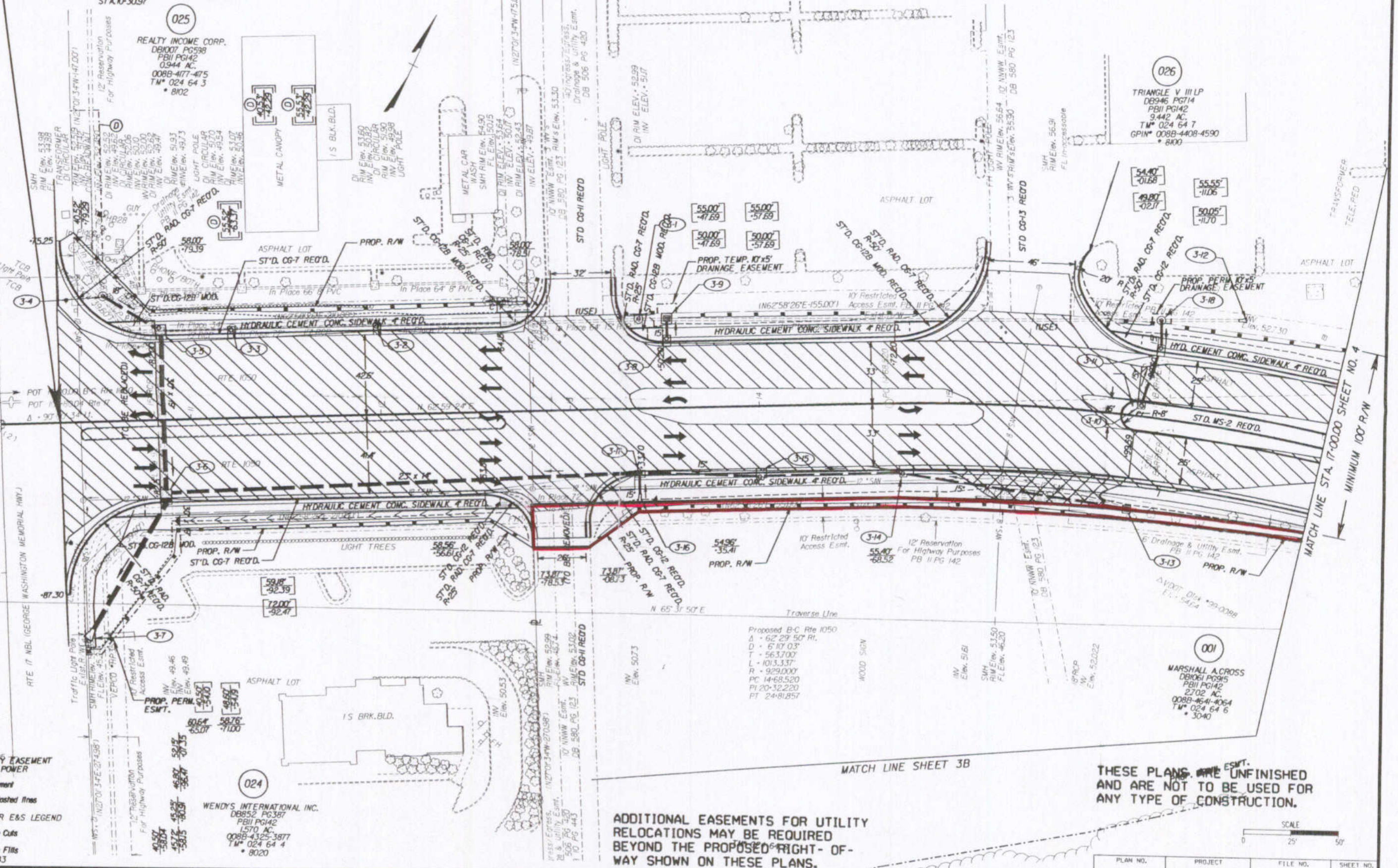
Sanitary Sewer Force
 Main Lines
 Property of:
 HRSD
 PO Box 5911
 Virginia Beach, VA 23471-0911

Sanitary Sewer Lines
 Property of:
 York County
 PO Box 532
 201 Goodwin Neck Rd.
 Yorktown, VA 23690-0532

DESIGN FEATURES RELATING TO CONSTRUCTION OR TO REGULATION AND CONTROL OF TRAFFIC MAY BE SUBJECT TO CHANGE AS DEEMED NECESSARY BY THE DEPARTMENT

REVISED	STATE	FEDERAL AID PROJECT	ROUTE	STATE PROJECT	SHEET NO.
10-18-04	VA.		1050	1050-099-180, C-501 R/W-201	3

BEG. PROJ. 1050-099-180, PE-101, RW-201, C-501
 STA. 10+30.97



PERMANENT UTILITY EASEMENT FOR DOMINION VA. POWER

Denotes Demolition of Pavement

Note: Figures in brackets and dot-dashed lines denote Permanent Easements.

NOTE: SEE GENERAL NOTES FOR E&S LEGEND

Denotes Construction Limits in Cuts

Denotes Construction Limits in Fills

BEARINGS BASED ON GPS NAD83

ADDITIONAL EASEMENTS FOR UTILITY RELOCATIONS MAY BE REQUIRED BEYOND THE PROPOSED RIGHT-OF-WAY SHOWN ON THESE PLANS.

THESE PLANS ARE UNFINISHED AND ARE NOT TO BE USED FOR ANY TYPE OF CONSTRUCTION.



PLAN NO.	PROJECT	FILE NO.	SHEET NO.
	1050-099-180		3

10/19/2004 10:55:4