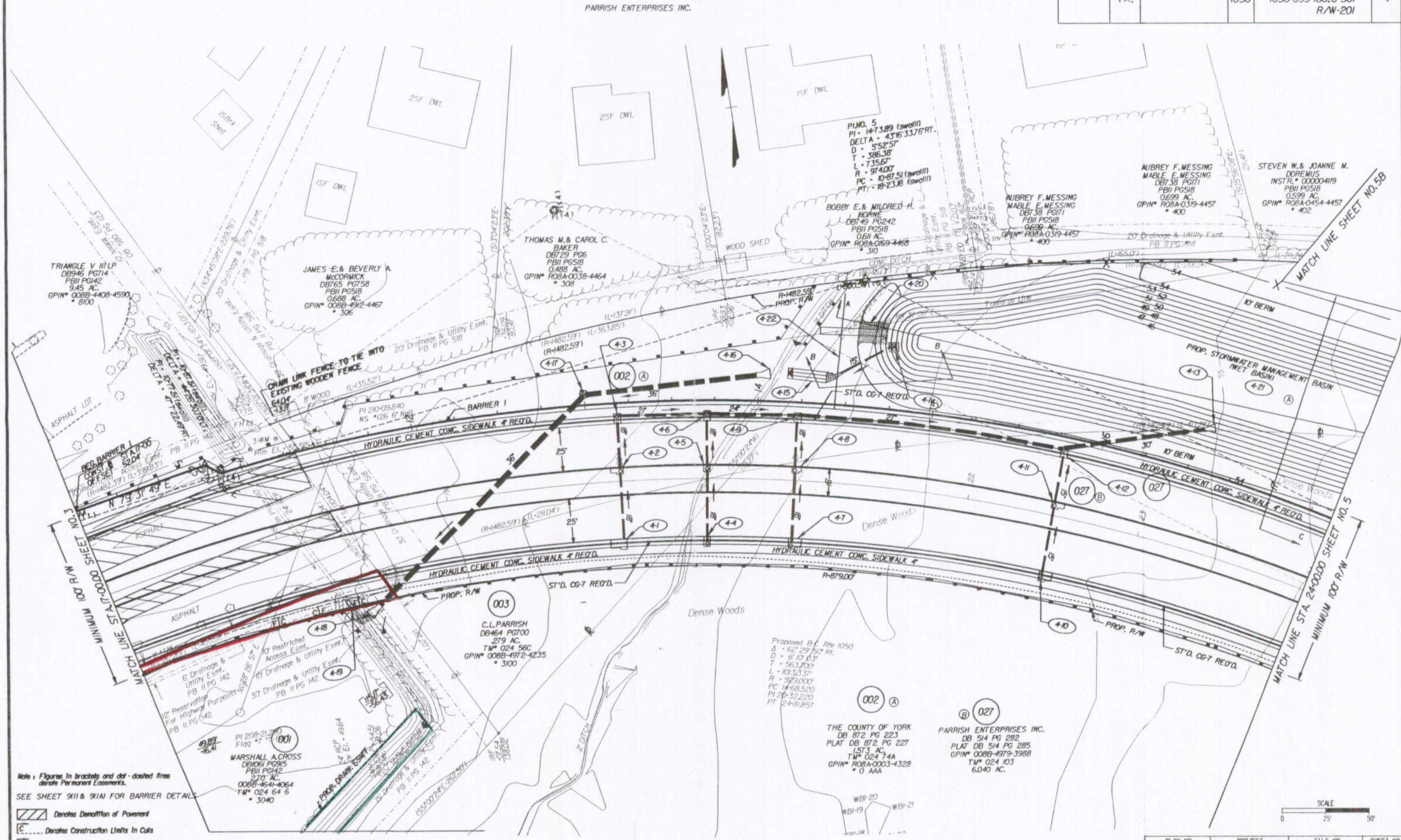


Design File - c:\documents\ms_jacob\4627\d14627\d14627004.dgn Ref. File - c:\documents\ms_jacob\ref\d14627.ref.dgn Ref. File - c:\documents\ms_jacob\ref\d14627.ref.dgn Ref. File - c:\documents\ms_jacob\ref\d14627.ref.dgn Ref. File - c:\documents\ms_jacob\ref\d14627.ref.dgn Ref. File - c:\documents\ms_jacob\ref\d14627.ref.dgn Ref. File - c:\documents\ms_jacob\ref\d14627.ref.dgn
 Design Levels on - 1-50.52-63 Levels On - 2-7-9-30.32-50.52-63 Levels On - 1-53.55-63 Levels On - 1-63 Levels On - 1-63 Levels On - 1-60.62-63 Levels On - 1-63

SURVEYED BY: ROBERT G. HARMON
 SUPERVISED BY: SONIA HALLUMS-PONTON (757) 925-2560
 DESIGNED BY: J. DIANE GEDUGE (757) 925-3624
 HAMPTON ROADS DISTRICT DESIGN UNIT

DESIGN FEATURES RELATING TO CONSTRUCTION OR TO REGULATION AND CONTROL OF TRAFFIC MAY BE SUBJECT TO CHANGE AS DEEMED NECESSARY BY THE DEPARTMENT

REVISED	STATE	FEDERAL AID PROJECT	ROUTE	STATE PROJECT	SHEET NO.
10-18-04	VA.		1050	1050-099-180.C-501 R/W-201	4



Note: Figures in brackets and dot-dashed lines denote Permanent Easements.
 SEE SHEET 9K11 & 9K1A FOR BARRIER DETAILS

Denotes Demolition of Pavement
 Denotes Construction Limits in Cuts
 Denotes Construction Limits in Fills
 NOTE: SEE GENERAL NOTES FOR E&S LEGEND

PLAN NO.	PROJECT	FILE NO.	SHEET NO.
	1050-099-180		4