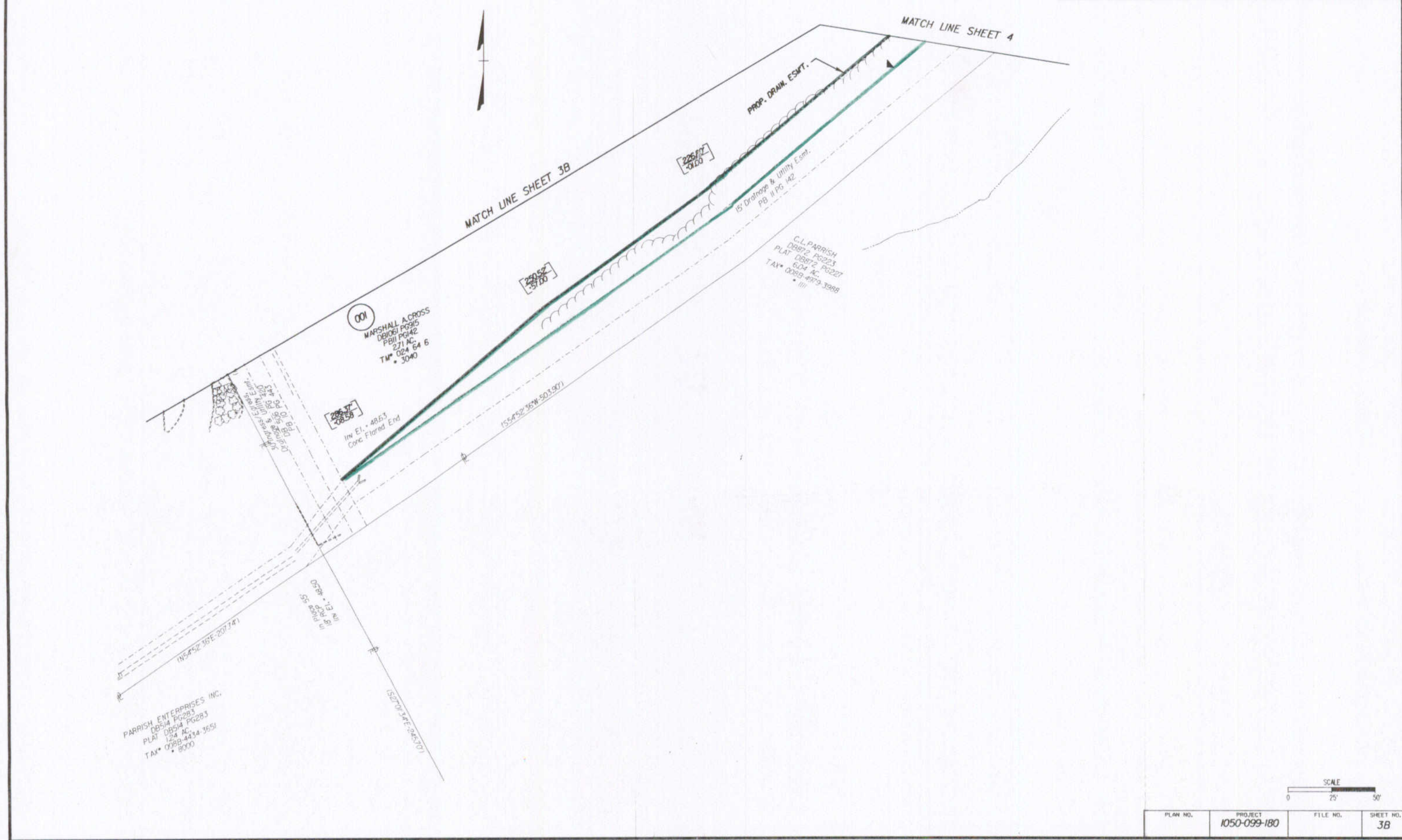


Design File - c:\documents\ms_jacob\4627\4627\4627003.dgn Ref. File - c:\documents\ms_jacob\4627\4627\4627003.dgn Levels On - 1-50,52-63
 Ref. File - c:\documents\ms_jacob\4627\4627\4627004.dgn Levels On - 1-50,52-63
 Ref. File - c:\documents\ms_jacob\4627\4627\4627.dgn Levels On - 1-50,52-63
 Ref. File - c:\documents\ms_jacob\4627\4627\4627.dgn Levels On - 1-63
 Ref. File - c:\documents\ms_jacob\4627\4627\4627.dgn Levels On - 1-63
 Ref. File - c:\documents\ms_jacob\4627\4627\4627.dgn Levels On - 1-63

SURVEYED BY - ROBERT D. HARMON
 SUPERVISED BY - SONIA HALLINS-PONTON (757) 925-2560
 DESIGNED BY - J. DIANE GEORGE (757) 925-3624
 HAMPTON ROADS DISTRICT DESIGN UNIT

DESIGN FEATURES RELATING TO CONSTRUCTION OR TO REGULATION AND CONTROL OF TRAFFIC MAY BE SUBJECT TO CHANGE AS DEEMED NECESSARY BY THE DEPARTMENT

REVISED	STATE	FEDERAL AID PROJECT	ROUTE	STATE PROJECT	SHEET NO.
	VA.		1050	1050-099-180.C-501 R/W-201	3B



PLAN NO.	PROJECT	FILE NO.	SHEET NO.
	1050-099-180		3B

02/14/2004 14:44:43