

Design File - c:\documents of ms\_jacov...  
Design Levels on - 1:50,52:63

Ref. File - c:\documents of ms\_jacov...  
Levels On - 1:63

Ref. File - c:\documents of ms\_jacov...  
Levels On - 1:60,62:63

Ref. File - c:\documents of ms\_jacov...  
Levels On - 1:63

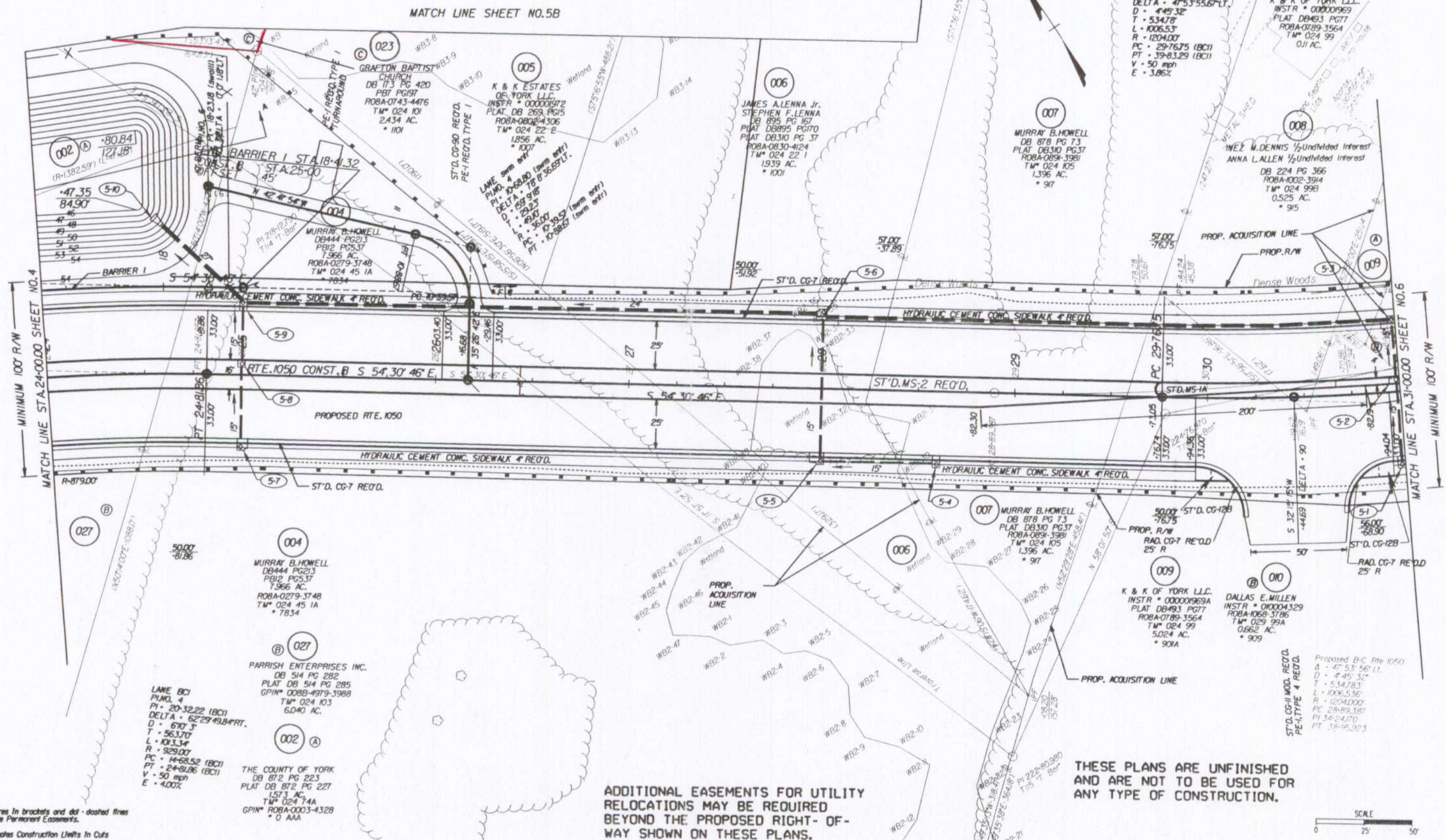
Ref. File - c:\documents of ms\_jacov...  
Levels On - 1:63

Ref. File - c:\documents of ms\_jacov...  
Levels On - 1:63

SURVEYED BY - BOBBER, G. BARNUM  
SUPERVISED BY - SONIA HALLIAMS-PONTON (757) 925-2560  
DESIGNED BY - J.L. DIANE, GEORGE (757) 925-3622  
HAMPTON ROADS DISTRICT DESIGN UNIT

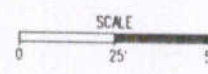
DESIGN FEATURES RELATING TO CONSTRUCTION OR TO REGULATION AND CONTROL OF TRAFFIC MAY BE SUBJECT TO CHANGE AS DEEMED NECESSARY BY THE DEPARTMENT

REVISED	STATE	FEDERAL AID	ROUTE	STATE	SHEET NO.
10-14-04 10-18-04 10-22-04	VA.		1050	1050-099-180, C-501 R/W-201	5



ADDITIONAL EASEMENTS FOR UTILITY RELOCATIONS MAY BE REQUIRED BEYOND THE PROPOSED RIGHT-OF-WAY SHOWN ON THESE PLANS.

THESE PLANS ARE UNFINISHED AND ARE NOT TO BE USED FOR ANY TYPE OF CONSTRUCTION.



Note: Figures in brackets and dot-dashed lines denote Permanent Easements.  
 [C] Denotes Construction Easements In Cuts  
 [E] Denotes Construction Limits In Fills  
 NOTE: SEE GENERAL NOTES FOR E&S LEGEND

PLAN NO.	PROJECT	FILE NO.	SHEET NO.
	1050-099-180		5

01/27/2004 08:05:44