

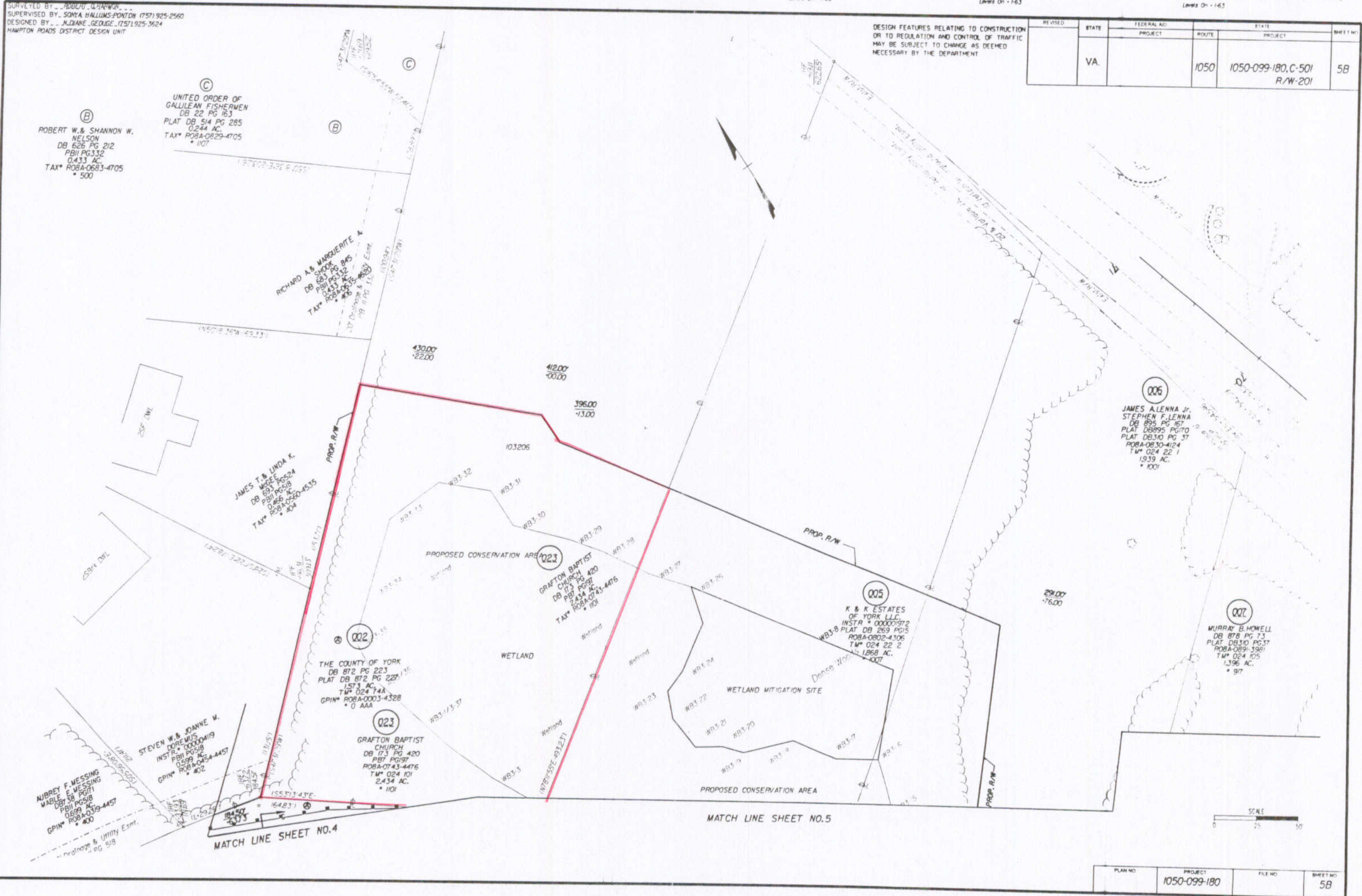
**PAGE 1**

Design File - c:\documents of ms\_jacob\4627\414627005.dgn Ref. File - c:\documents of ms\_jacob\4627\414627004.dgn Ref. File - c:\documents of ms\_jacob\4627\414627005.dgn Ref. File - c:\documents of ms\_jacob\4627\414627005.dgn Ref. File - c:\documents of ms\_jacob\4627\414627005.dgn Ref. File - c:\documents of ms\_jacob\4627\414627005.dgn Ref. File - c:\documents of ms\_jacob\4627\414627005.dgn  
 Design levels on - 1-50, ROBERT Q. HARMON Levels On - 1-50,52-63 Levels On - 1-63 Levels On - 1-63 Levels On - 1-63 Levels On - 1-63 Levels On - 1-63

SURVEYED BY: ROBERT Q. HARMON  
 SUPERVISED BY: SONIA HALLUMS-PONTON (757) 925-2560  
 DESIGNED BY: N. DIANE GEORGE (757) 925-3624  
 HAMPTON ROADS DISTRICT DESIGN UNIT

DESIGN FEATURES RELATING TO CONSTRUCTION OR TO REGULATION AND CONTROL OF TRAFFIC MAY BE SUBJECT TO CHANGE AS DEEMED NECESSARY BY THE DEPARTMENT

REVISED	STATE	FEDERAL AID PROJECT	ROUTE	STATE PROJECT	SHEET NO.
	VA.		1050	1050-099-180, C-501 R/W-201	5B



PLAN NO.	PROJECT	FILE NO.	SHEET NO.
	1050-099-180		5B

01/11/2004 14:24