

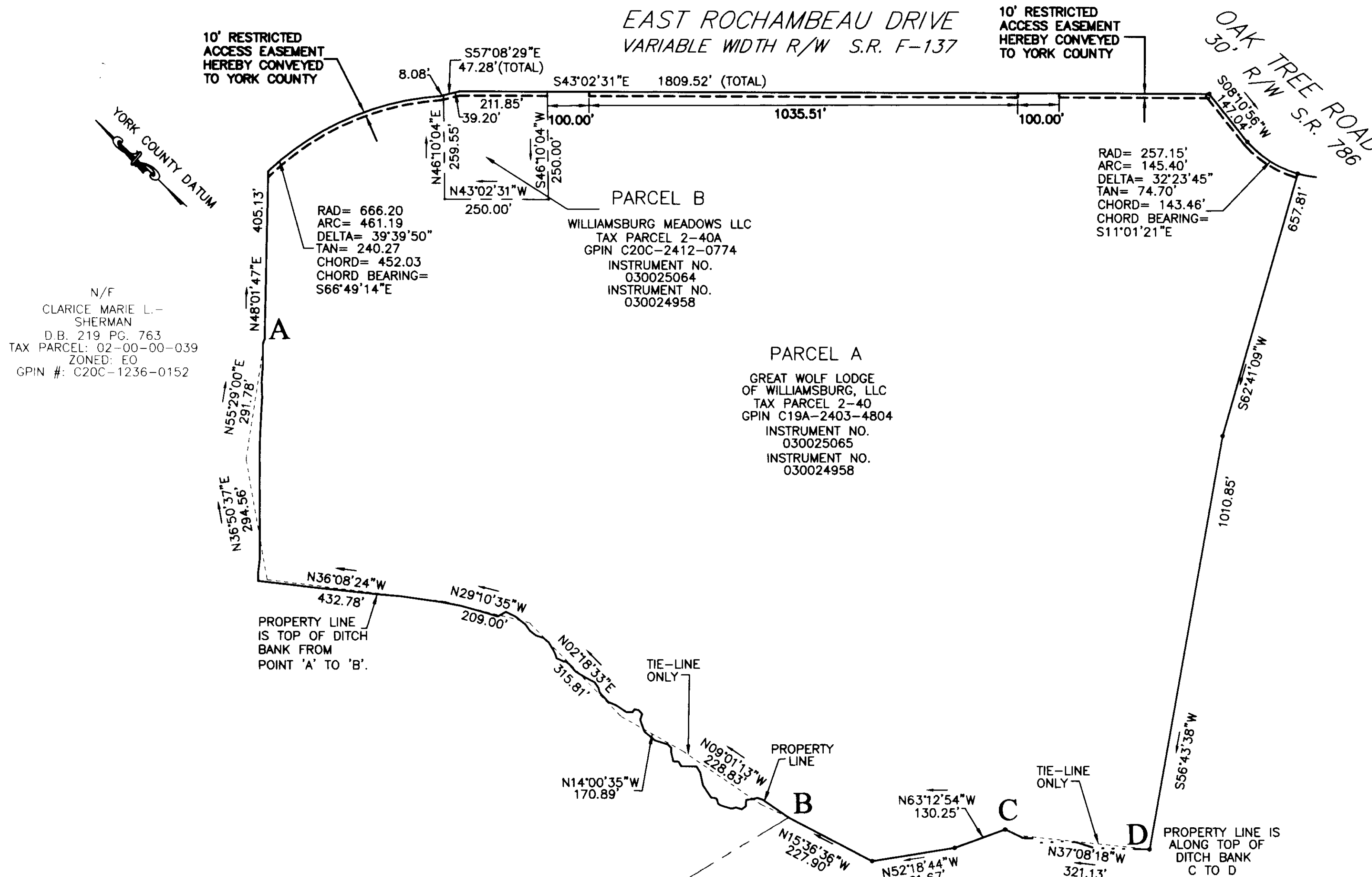
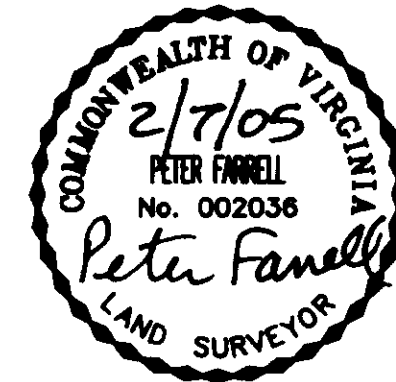
VICINITY MAP 1"=2000'

NOTES:

1. THE RECORDATION OF THIS PLAT SHALL OPERATE TO TRANSFER TO THE COUNTY OF YORK ANY EASEMENT INDICATED ON THE PLAT FOR DRAINAGE AND/OR WATERLINE TO CREATE A PUBLIC RIGHT- OF- PASSAGE OVER THE SAME UNLESS OTHERWISE NOTED ON THIS PLAT.
2. DRAINAGE AND UTILITY EASEMENTS CONVEYED TO THE COUNTY BY RECORDATION OF THIS PLAT SHALL BE EXCLUSIVE TO THE COUNTY, UNLESS OTHERWISE NOTED. CONVEYANCE OF SUCH EASEMENTS TO THE COUNTY ALSO INCLUDE: (I) THE COUNTY'S RIGHT OF INGRESS AND EGRESS OVER THE OWNER'S LAND ADJACENT TO THE EASEMENT AS NECESSARY TO INSPECT, MAINTAIN AND OPERATE THE COUNTY'S FACILITIES WITHIN THE EASEMENT AND (II) THE RIGHT OF THE COUNTY TO ASSIGN TO OTHERS, FROM TIME TO TIME, THE RIGHT TO LOCATE FACILITIES THEREIN SERVING THE PUBLIC, INCLUDING, BUT NOT LIMITED TO, WATER, ELECTRIC, TELEPHONE, COMMUNICATIONS, AND GAS UTILITY FACILITIES.

PLAT OF EASEMENT DEDICATION
 FROM
 GREAT WOLF LODGE OF
 WILLIAMSBURG LLC
 TO
 THE COUNTY OF YORK, VIRGINIA
 WALLER MILL DISTRICT
 YORK COUNTY, VIRGINIA
 SCALE: 1"=200' DATE: 02/07/05

SHEET 1 OF 1



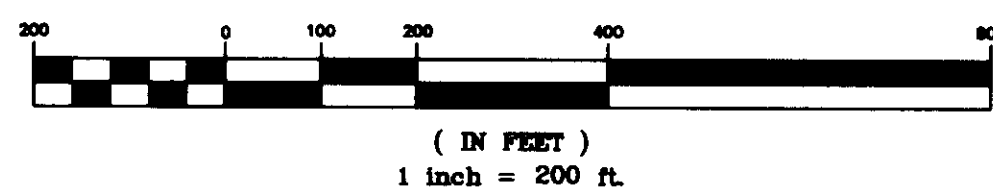
2005 MAR 11 AM 10:29



4029 Ironbound Road
 Suite 100
 Williamsburg, VA 23188
 Tel. (757) 253-2975
 Fax (757) 228-0049
 Email: lmdg@landmarkdg.com

5544 Greenwich Road
 Suite 200
 Virginia Beach, VA 23462
 Tel. (757) 473-2000
 Fax (757) 497-7933
 Email: lmdg@landmarkdg.com

GRAPHIC SCALE



APPROVED:

YORK COUNTY BOARD OF SUPERVISORS
 BY: *Al Masdeha*
 PLAT APPROVING AGENT

DATE: 3/11/05

STATE OF VIRGINIA
 COUNTY OF YORK
 IN THE CLERKS OFFICE OF THE CIRCUIT COURT FOR THE
 COUNTY OF YORK THE 11th DAY OF MAR. 2005 THIS
 MAP WAS PRESENTED AND ADMITTED TO RECORD AS THE LAW
 DIRECTS AS INSTRUMENT NO. 050004529 10:28am

TESTE: Lynn S. Jenkins
 CLERK

By: *Christina E. Norman, D.C.*
 DATE:

DRAWN BY: PF	PROJ. NO.: 2002220-100.12
CHKD. BY: GRO	DWG. NO. 15798W

2002220-100.12 WOLF LODGE EASEMENT PLATS \ RESTR. ACC ESMNT.dwg