

SURVEYOR'S CERTIFICATE

I HEREBY CERTIFY THAT THIS SURVEY, TO THE BEST OF MY KNOWLEDGE AND BELIEF, IS CORRECT AND COMPLIES WITH THE MINIMUM PROCEDURES AND STANDARDS ESTABLISHED BY THE VIRGINIA BOARD OF ARCHITECTS, PROFESSIONAL ENGINEERS, LAND SURVEYORS, AND CERTIFIED LANDSCAPE ARCHITECTS.

SIGNED: James S. Leigh DATE: 4/5/2005
 JAMES S. LEIGH, L.S. # 1758

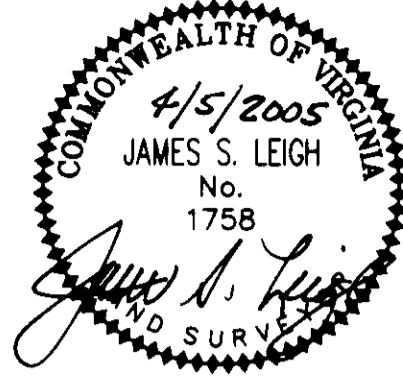
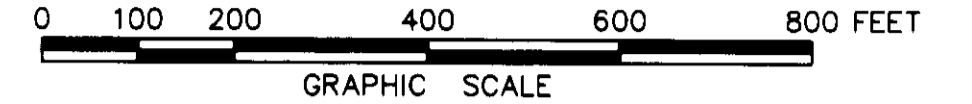


EXHIBIT "C"

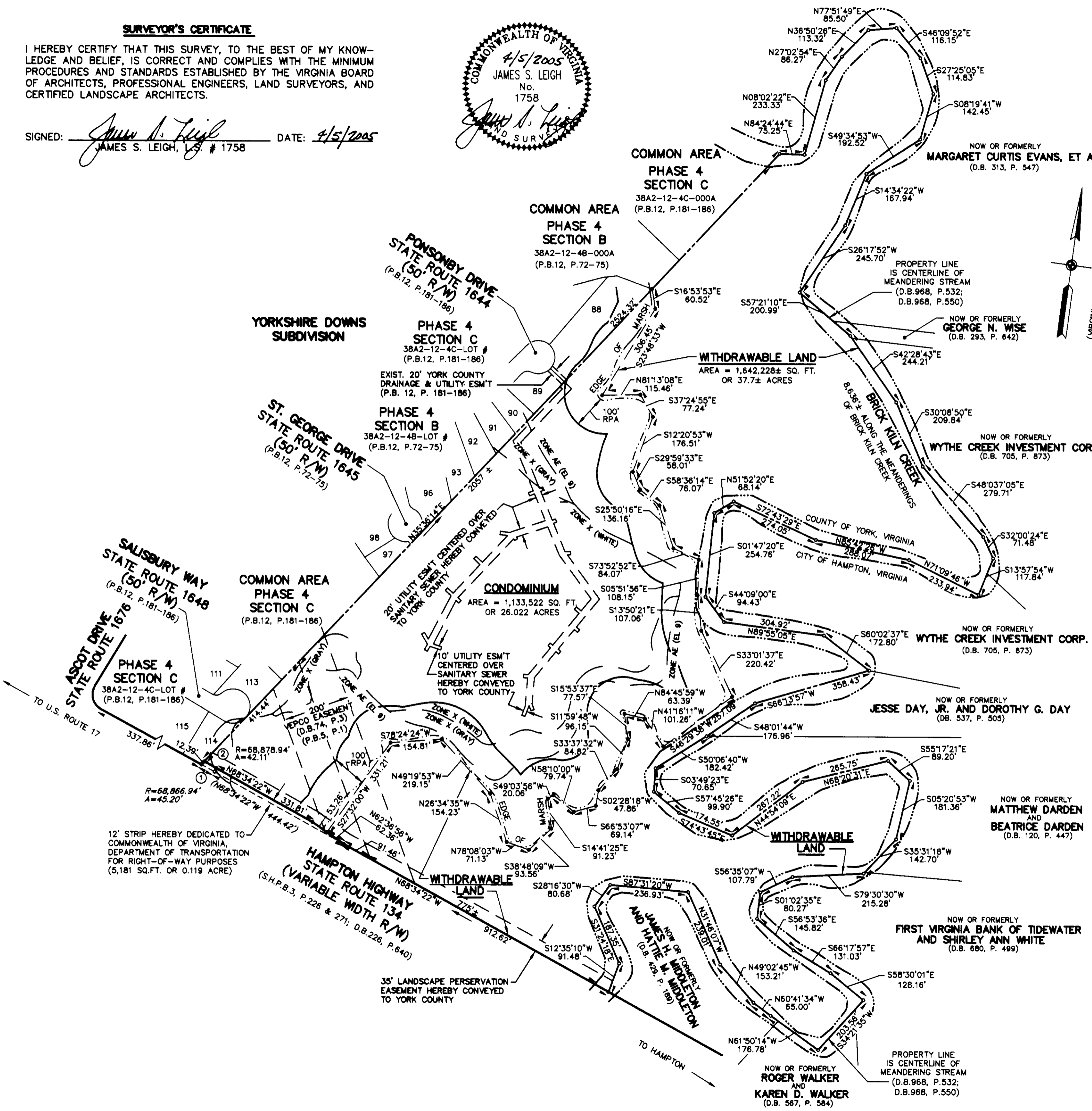
PLAT OF
**VILLAS ON SHADY BANKS
 A CONDOMINIUM
 PHASE I**

(PROP REF.: D.B.54, P.107; D.B.968, PGS.532-550)
 (INSTR. #050004843; INSTR. #030021817)
 SHEET 3 OF 6

BETHEL DISTRICT - COUNTY OF YORK, VIRGINIA
 SCALE: 1" = 200' FEBRUARY 1, 2005



THE SIRINE GROUP, LTD.
 SURVEYORS • ENGINEERS • PLANNERS
 4794 GEORGE WASHINGTON MEMORIAL HIGHWAY
 U.S. ROUTE 17, P.O. BOX 450
 WHITE MARSH, VIRGINIA 23183
 (804)693-9548



CURVE TABLE

NO.	RADIUS	DELTA	ARC	TANGENT	CHORD	CHORD BRG.
1	68,866.94'	00°02'15"	45.20'	22.80'	45.20'	N68°49'54"W
2	68,878.94'	00°02'06"	42.11'	21.06'	42.11'	N68°49'49"W

APPROVED:
 YORK COUNTY BOARD OF SUPERVISORS
 BY: Al Maddaleno DATE: 4/13/05
 PLAT APPROVING AGENT

STATE OF VIRGINIA
 COUNTY OF YORK
 IN THE CLERK'S OFFICE OF THE CIRCUIT COURT FOR YORK COUNTY-POQUOSON, VIRGINIA, THE 14 DAY OF April, 2005, THIS PLAT WAS PRESENTED AND ADMITTED TO RECORD AS THE LAW DIRECTS AS INSTRUMENT NUMBER 050004843
9:13am

TESTE: Lynn S. Jenkins
 CLERK
 BY: Christina Norman
 DEPUTY CLERK

PROPERTY IS ASSESSOR'S PARCEL: 38A2-01-00-005
 GPIN: W02C-0155-1805