

THE UNDERSIGNED CERTIFIES THAT THIS PLAN IS ACCURATE AND COMPLIES WITH THE PROVISIONS OF THE CODE OF VIRGINIA SECTION 55-79.58 (b) AND ALL UNITS DEPICTED HEREON HAVE BEEN SUBSTANTIALLY COMPLETED.

SIGNED: C.L. Pittman DATE: 4/5/2005
C.L. PITTMAN, P.E.

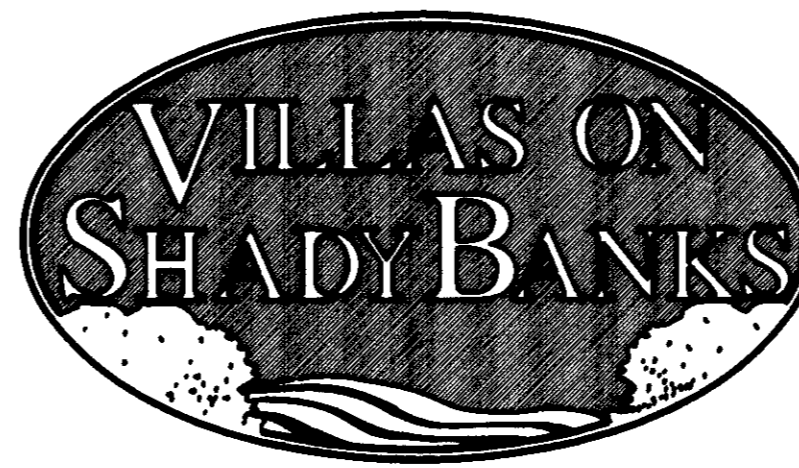
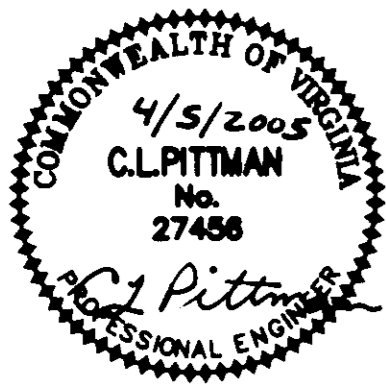
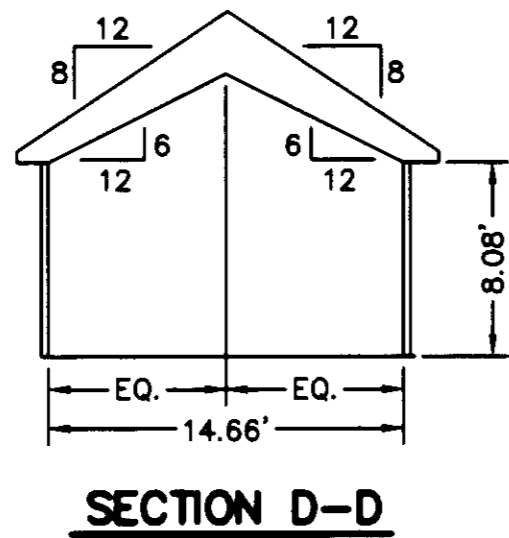
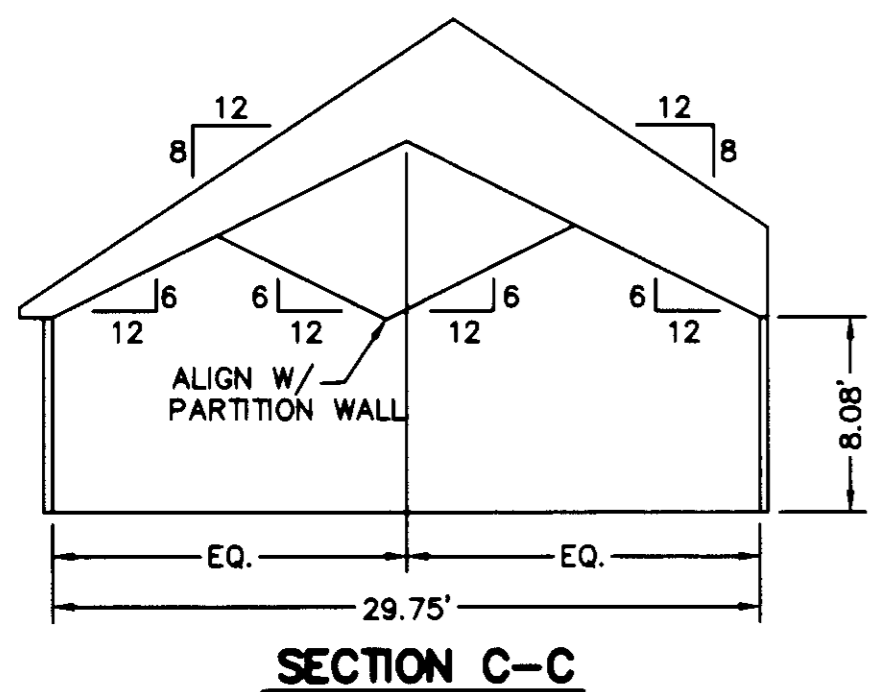
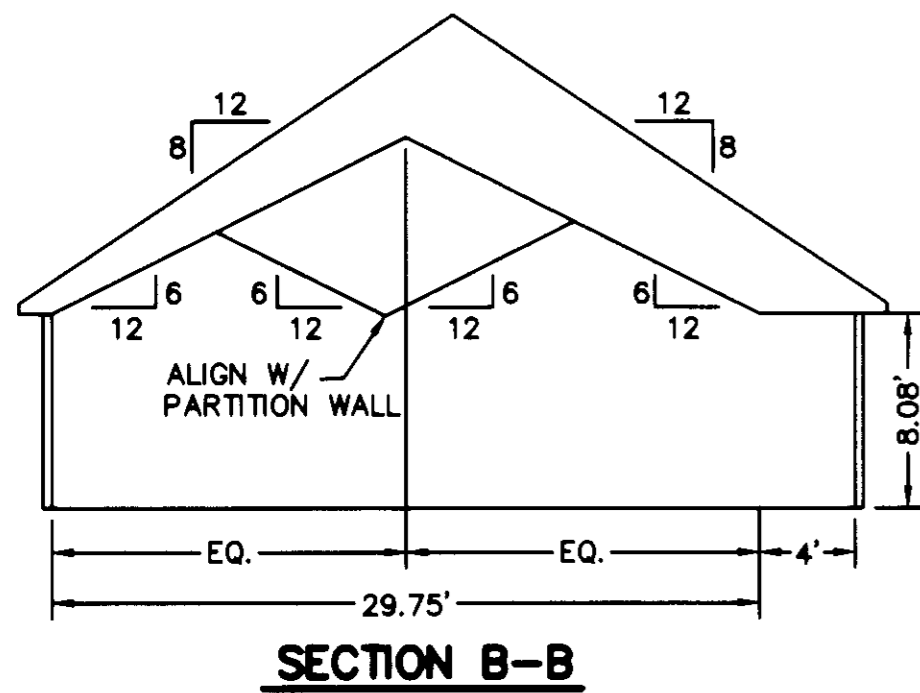
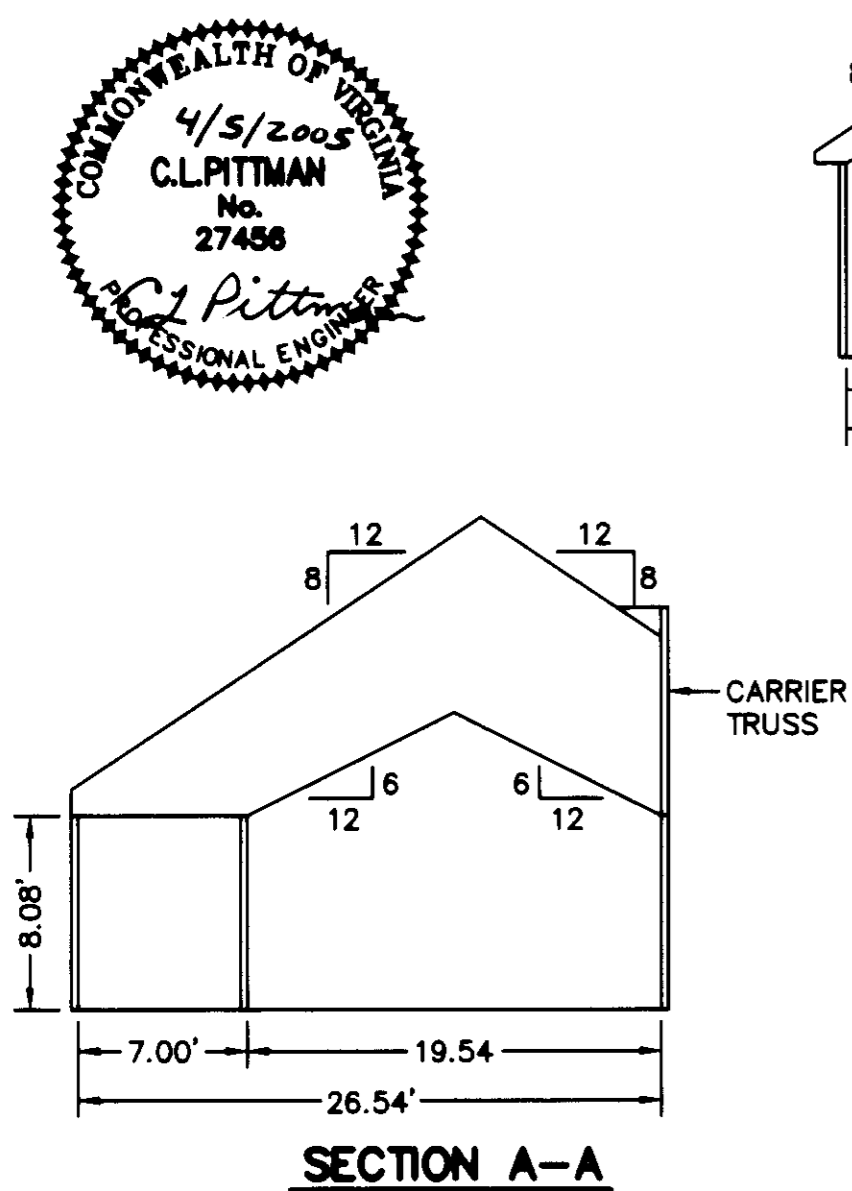


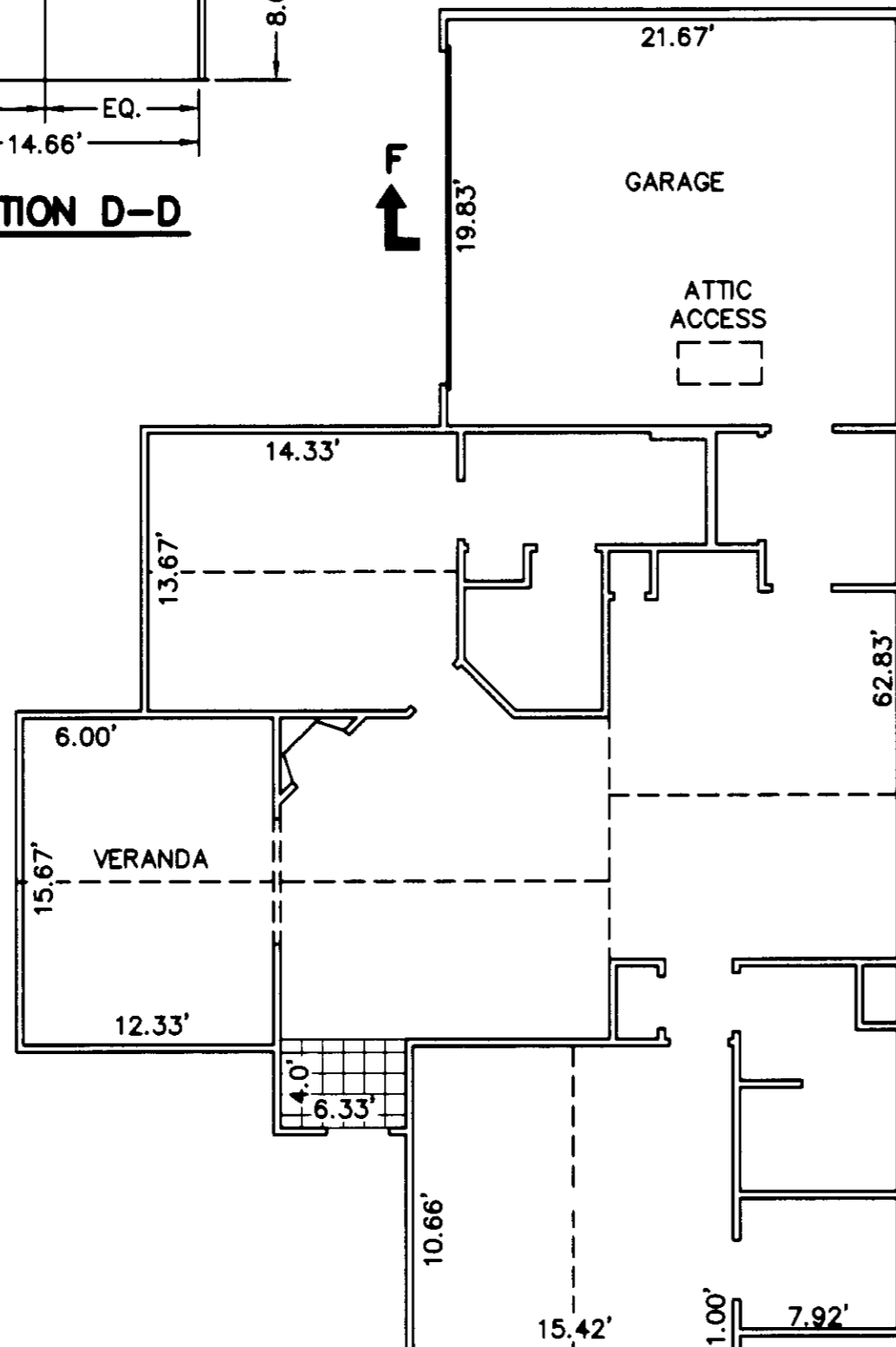
EXHIBIT "D"
PLAT OF
VILLAS ON SHADY BANKS
A CONDOMINIUM
PHASE I

SHEET 6 OF 6
BETHEL DISTRICT - COUNTY OF YORK, VIRGINIA
SCALE: 1/8" = 1'-0" FEBRUARY 1, 2005
0 4 8 16 24 36 FEET
GRAPHIC SCALE

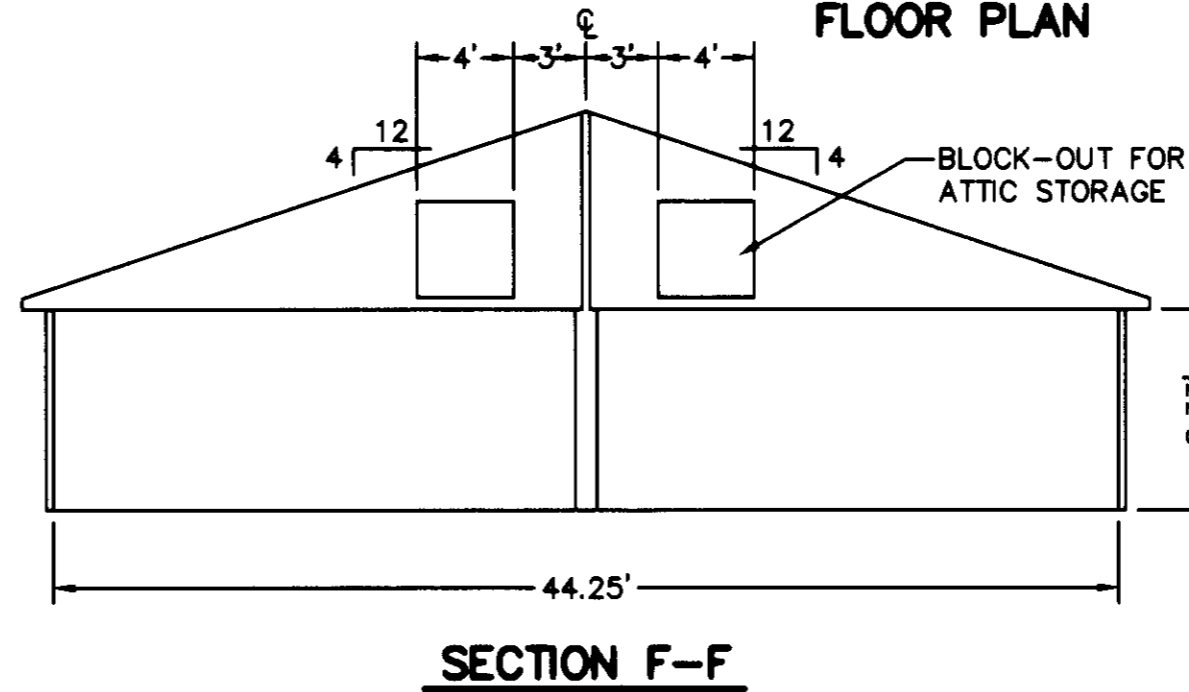
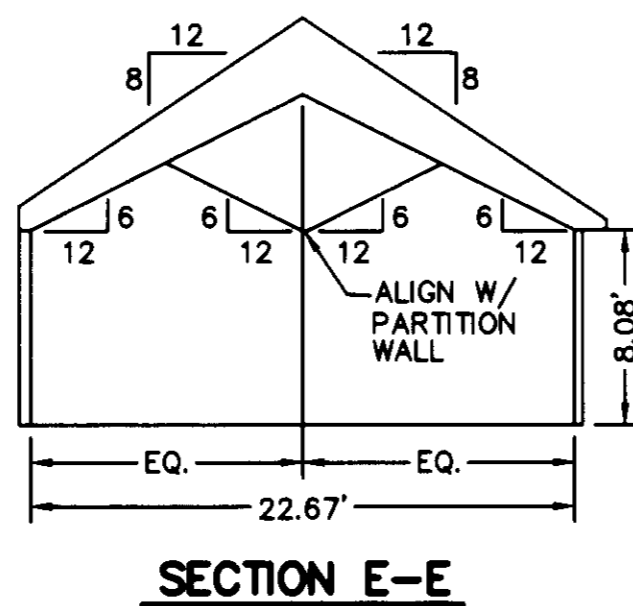
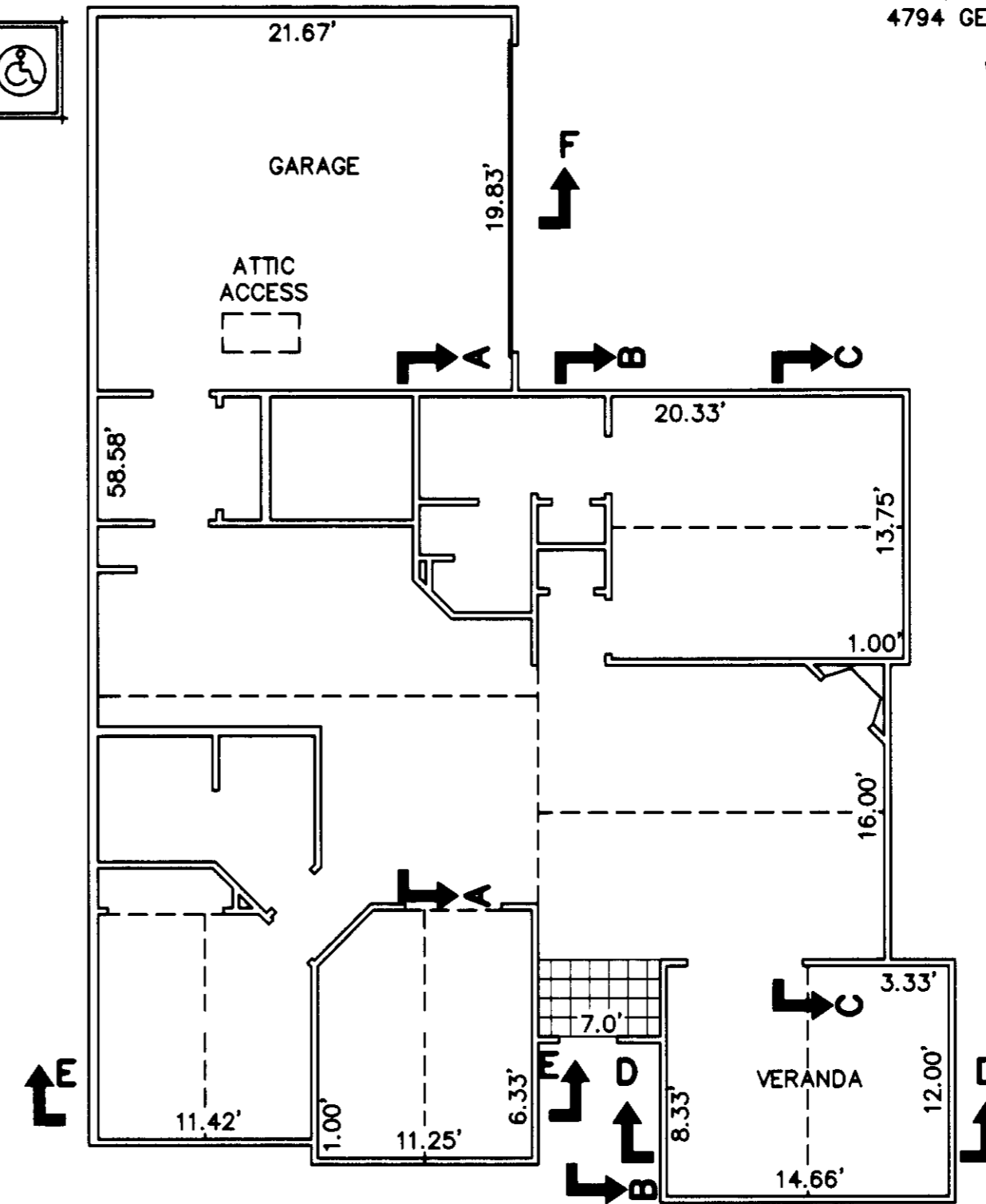
THE SIRINE GROUP, LTD.
SURVEYORS • ENGINEERS • PLANNERS
4794 GEORGE WASHINGTON MEMORIAL HIGHWAY
U.S. ROUTE 17, P.O. BOX 450
WHITE MARSH, VIRGINIA 23183
(804)693-9548



**BUILDING 11-1, 11-3, 12-2, 12-4,
15-1 & 15-3 ABBEY
FLOOR PLAN**



**BUILDING 11-4, 12-3,
15-2 & 15-4 CANTERBURY
FLOOR PLAN**



APPROVED:
YORK COUNTY BOARD OF SUPERVISORS

BY: Al Maddalena
PLAT APPROVING AGENT
DATE: 4/13/05

NOTES:
1. ALL BUILDING DIMENSIONS SHOWN HEREON ARE INTERIOR DIMENSIONS AND ARE IN FEET.

STATE OF VIRGINIA
COUNTY OF YORK

IN THE CLERK'S OFFICE OF THE CIRCUIT COURT FOR YORK COUNTY-
POQUOSON, VIRGINIA, THIS 14 DAY OF April, 2005,
THIS PLAT WAS PRESENTED AND ADMITTED TO RECORD AS THE
LAW DIRECTS AS INSTRUMENT NUMBER 050001045.
9:13am

TESTE: Lynn S. Jenkins
CLERK
BY: Christina Norman, D.C.