

PLAT OF
VILLAS ON SHADY BANKS
A CONDOMINIUM
PHASE II

(PROP. REF.: D.B. 54, P.107; D.B. 968, PGS.532-550)
(INSTR. #050004943; INSTR. #030021817)
SHEET 2 OF 3

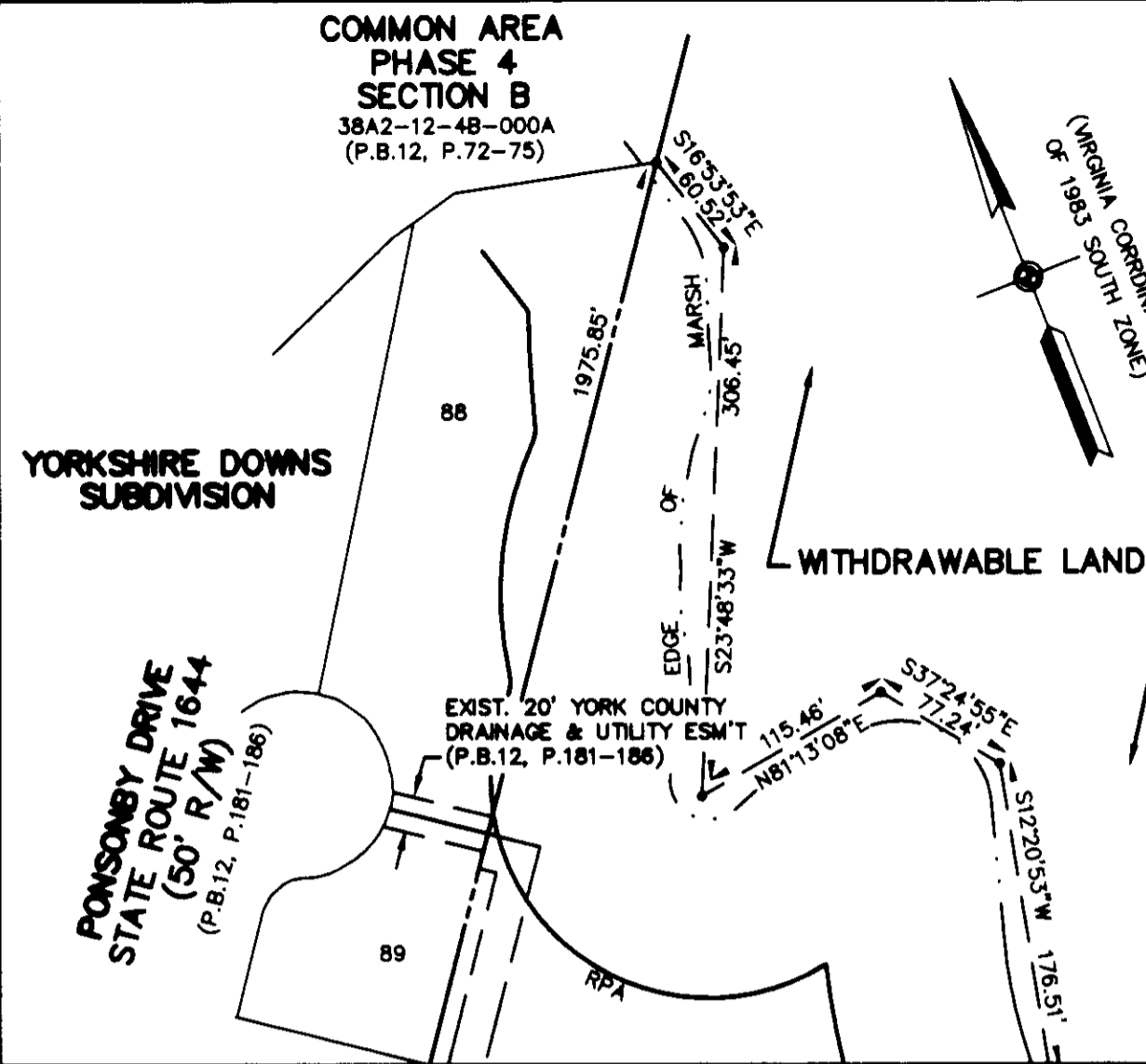
BETHEL DISTRICT - COUNTY OF YORK, VIRGINIA
SCALE: 1" = 100' APRIL 19, 2005

0 50 100 200 300 400 FEET

GRAPHIC SCALE

THE SIRINE GROUP, LTD.

SURVEYORS • ENGINEERS • PLANNERS
4794 GEORGE WASHINGTON MEMORIAL HIGHWAY
P.O. BOX 450, U.S. ROUTE 17
WHITE MARSH, VIRGINIA 23183
(804) 693-9548



PHASE 4 SECTION C
38A2-12-4C-LOT #
(P.B.12, P.181-186)

PHASE 4 SECTION B
38A2-12-4B-LOT #
(P.B.12, P.72-75)

ST. GEORGE DRIVE
STATE ROUTE 1645
(50' R/W)
(P.B.12, P.72-75)

PHASE II
1,272 ACRES
OR 55,308 S.F.

PHASE I
2,954 ACRES
OR 128,660 SQ.FT.
(INST. #050007095)

PHASE II
1,427 ACRES
OR 62,166 S.F.

COMMON AREA
PHASE 4 SECTION C
(P.B.12, P.181-186)

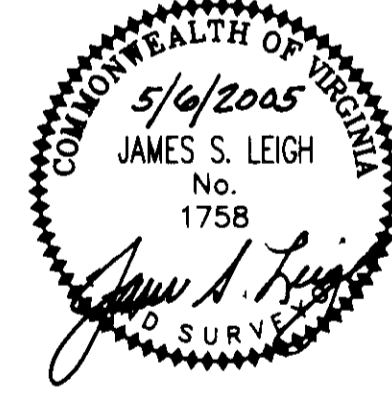
PHASE 4 SECTION C
38A2-12-4C-LOT #
(P.B.12, P.181-186)

SALISBURY WAY
STATE ROUTE 1648
(50' R/W)
(P.B.12, P.181-186)

ASCOT DRIVE
STATE ROUTE 1676
(VARI. WIDTH R/W)

HAMPTON HIGHWAY
STATE ROUTE 134
(VARIABLE WIDTH R/W)
(S.H.P.B.3, P.226 & 271; D.B.226, P.640)
(INSTR. #050007095)

R=68,878.94
Δ=00°02'08"
T=21.06
A=42.11'
CH=42.11
CH BEARING=N68°49'49"W



APPROVED:
YORK COUNTY BOARD OF SUPERVISORS

BY: *Al Maddalena*
PLAT APPROVING AGENT

DATE: 5/11/05

STATE OF VIRGINIA
COUNTY OF YORK
IN THE CLERK'S OFFICE OF THE CIRCUIT COURT FOR
YORK COUNTY-POQUOSON THE 11th DAY OF MAY 2005,
THIS PLAT WAS PRESENTED AND ADMITTED TO
RECORD AS THE LAW DIRECTS AS INSTRUMENT No.
050010619 12:04 PM

TESTE: *Lynn S. Jenkins*
CLERK

BY: *Anchalee M. Chivananich*
DEPUTY CLERK

PROPERTY IS ASSESSOR'S PARCEL 38A2-01-00-005
GPIN: W02C-0155-1805