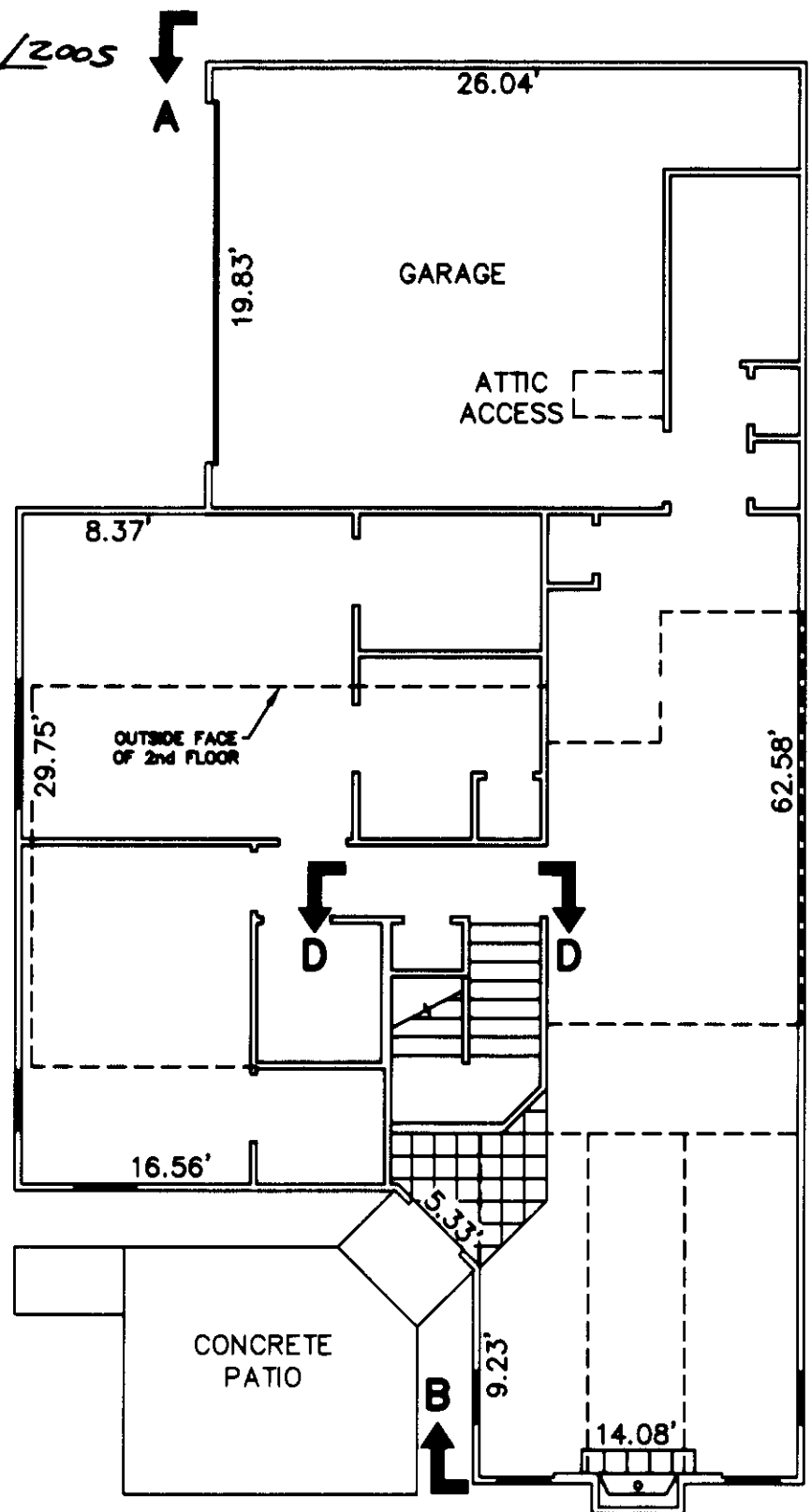
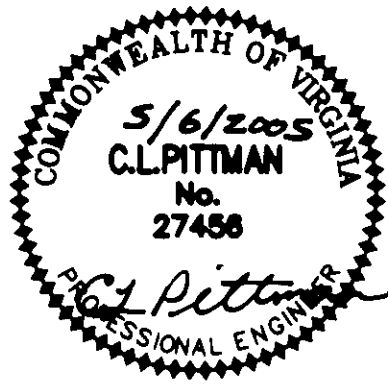
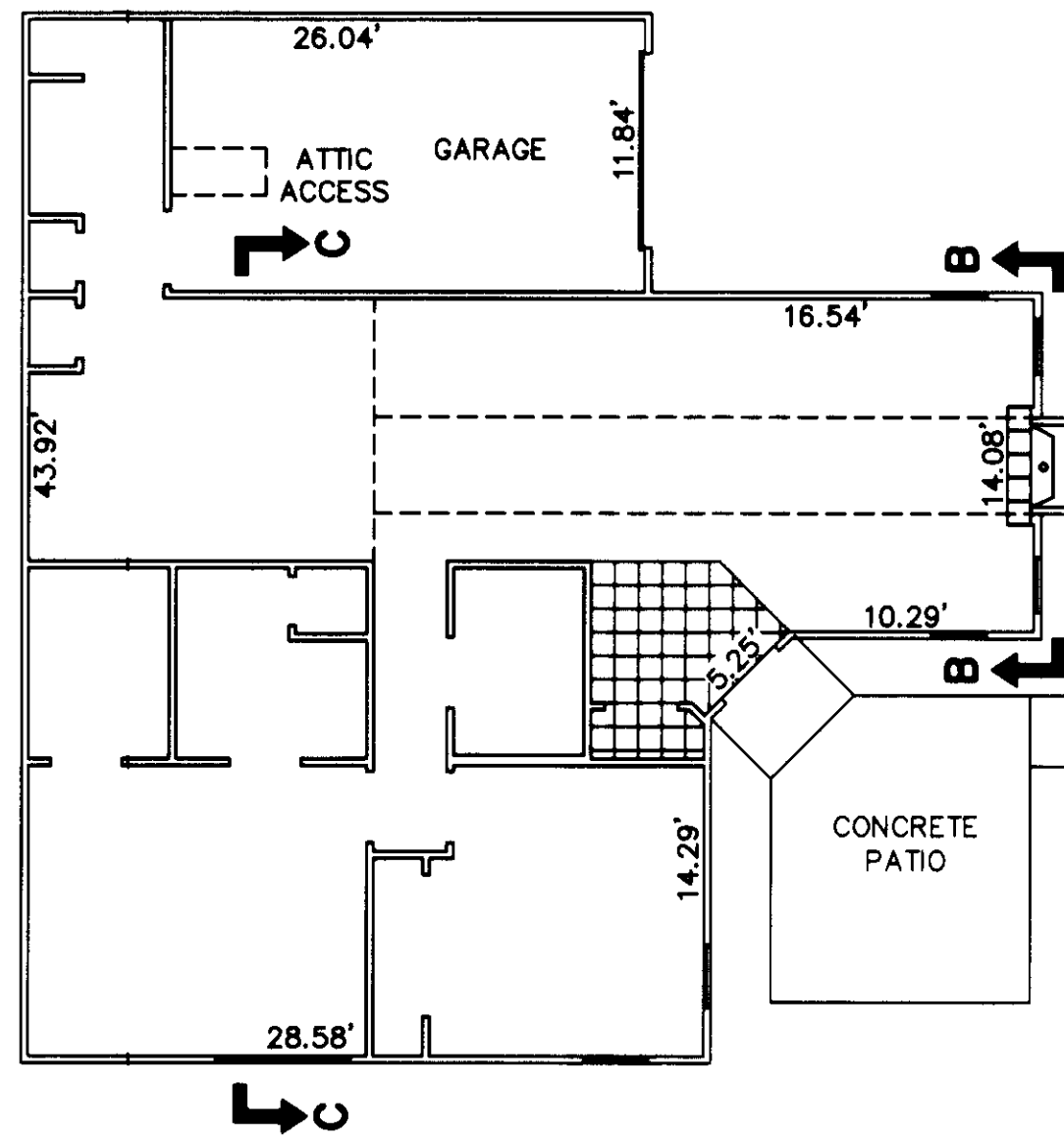


THE UNDERSIGNED CERTIFIES THAT THIS PLAN IS ACCURATE AND COMPLIES WITH THE PROVISIONS OF THE CODE OF VIRGINIA SECTION 55-79.58 (b) AND ALL UNITS DEPICTED HEREON HAVE BEEN SUBSTANTIALLY COMPLETED.

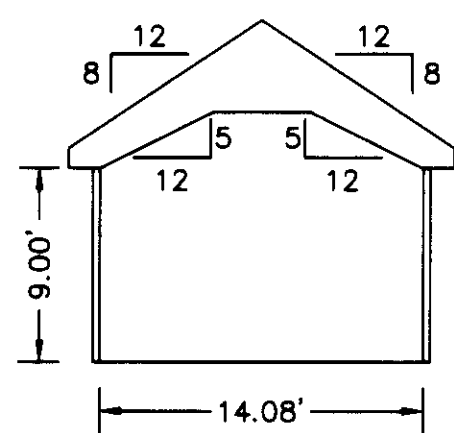
SIGNED: C.L. Pittman DATE: 5/6/2005  
C.L. PITTMAN, P.E.



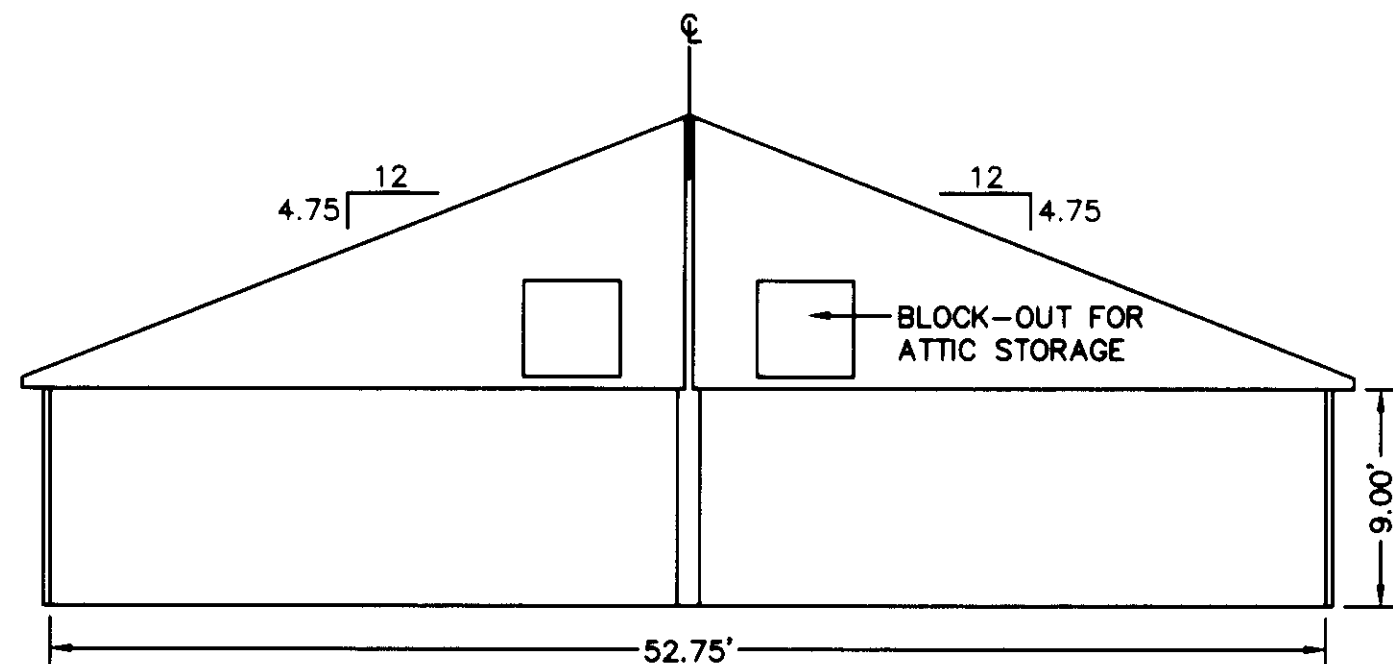
**BUILDING 18-1, 18-3,  
19-2 & 19-4 - CHATEAU  
FLOOR PLAN  
W/ CONCRETE PATIO**



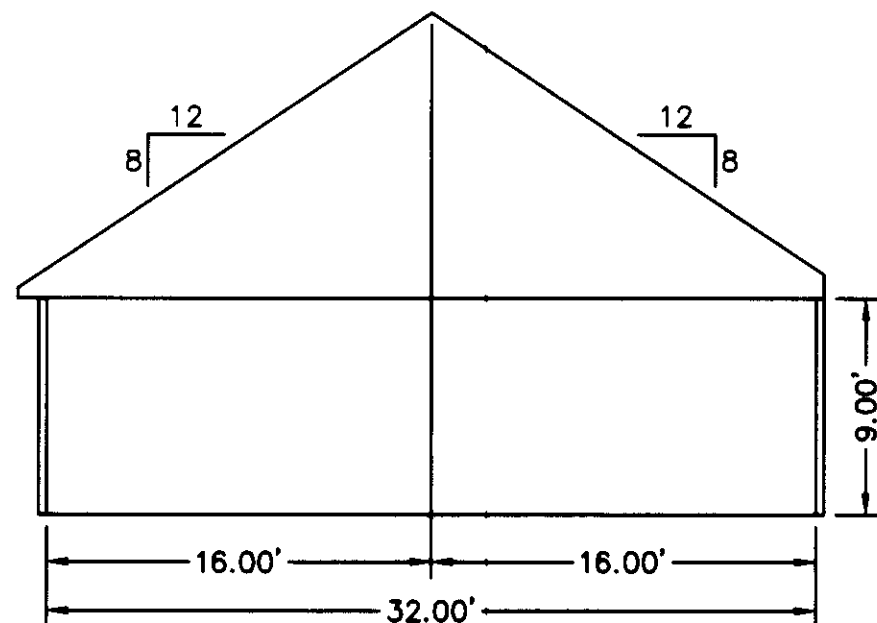
**BUILDING 18-2, 18-4,  
19-1 & 19-3 - VILLA  
FLOOR PLAN  
W/ CONCRETE PATIO**



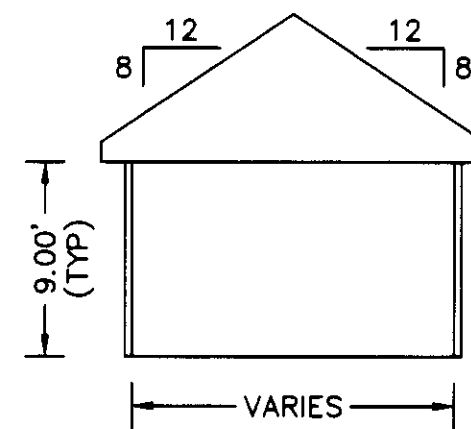
**SECTION B-B**



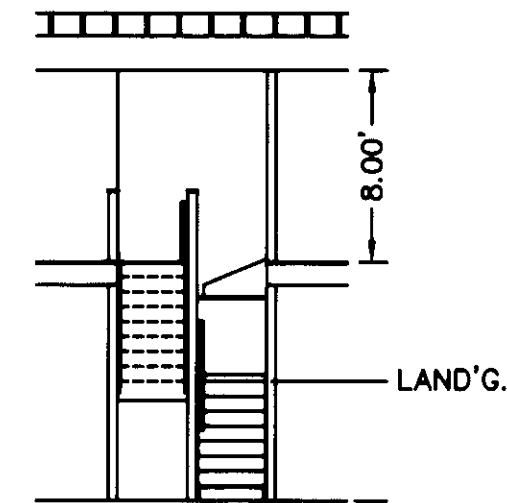
**SECTION A-A**



**SECTION C-C**



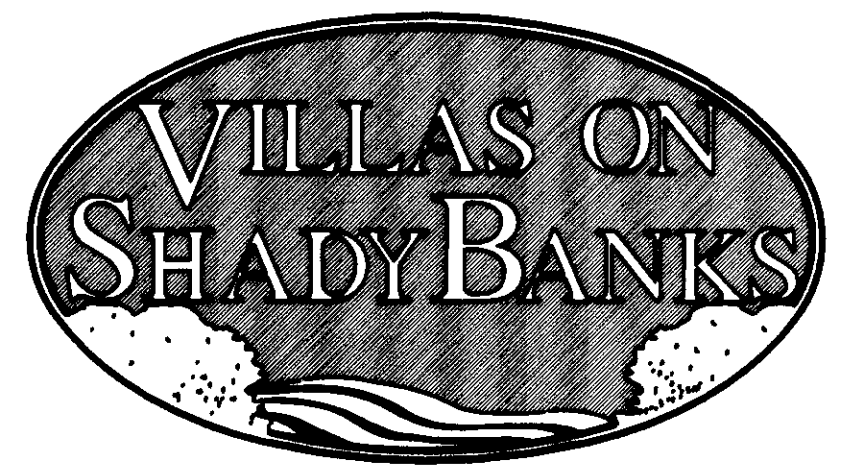
**TYPICAL  
ROOM SECTION**



**SECTION D-D  
LOFT**

**EXHIBIT "D"**  
PLAT OF  
**VILLAS ON SHADY BANKS**  
A CONDOMINIUM  
PHASE II  
SHEET 3 OF 3  
BETHEL DISTRICT - COUNTY OF YORK, VIRGINIA  
SCALE: 1/8" = 1'-0" APRIL 19, 2005

GRAPHIC SCALE  
**THE SIRINE GROUP, LTD.**  
SURVEYORS • ENGINEERS • PLANNERS  
4794 GEORGE WASHINGTON MEMORIAL HIGHWAY  
P.O. BOX 450, U.S. ROUTE 17  
WHITE MARSH, VIRGINIA 23183  
(804)693-9548



APPROVED:  
YORK COUNTY BOARD OF SUPERVISORS

BY: Al Maddalena  
PLAT APPROVING AGENT

DATE: 5/11/05

NOTES:  
1. ALL BUILDING DIMENSIONS SHOWN HEREON ARE INTERIOR DIMENSIONS AND ARE IN FEET.

STATE OF VIRGINIA  
COUNTY OF YORK  
IN THE CLERK'S OFFICE OF THE CIRCUIT COURT FOR YORK COUNTY-  
POQUOSON, VIRGINIA, THIS 11th DAY OF May, 2005,  
THIS PLAT WAS PRESENTED AND ADMITTED TO RECORD AS THE  
LAW DIRECTS AS INSTRUMENT NUMBER 050010618

TESTE: Lynn S. Jenkins  
CLERK  
BY: Anchalee M. Chivanawid  
DEPUTY CLERK