

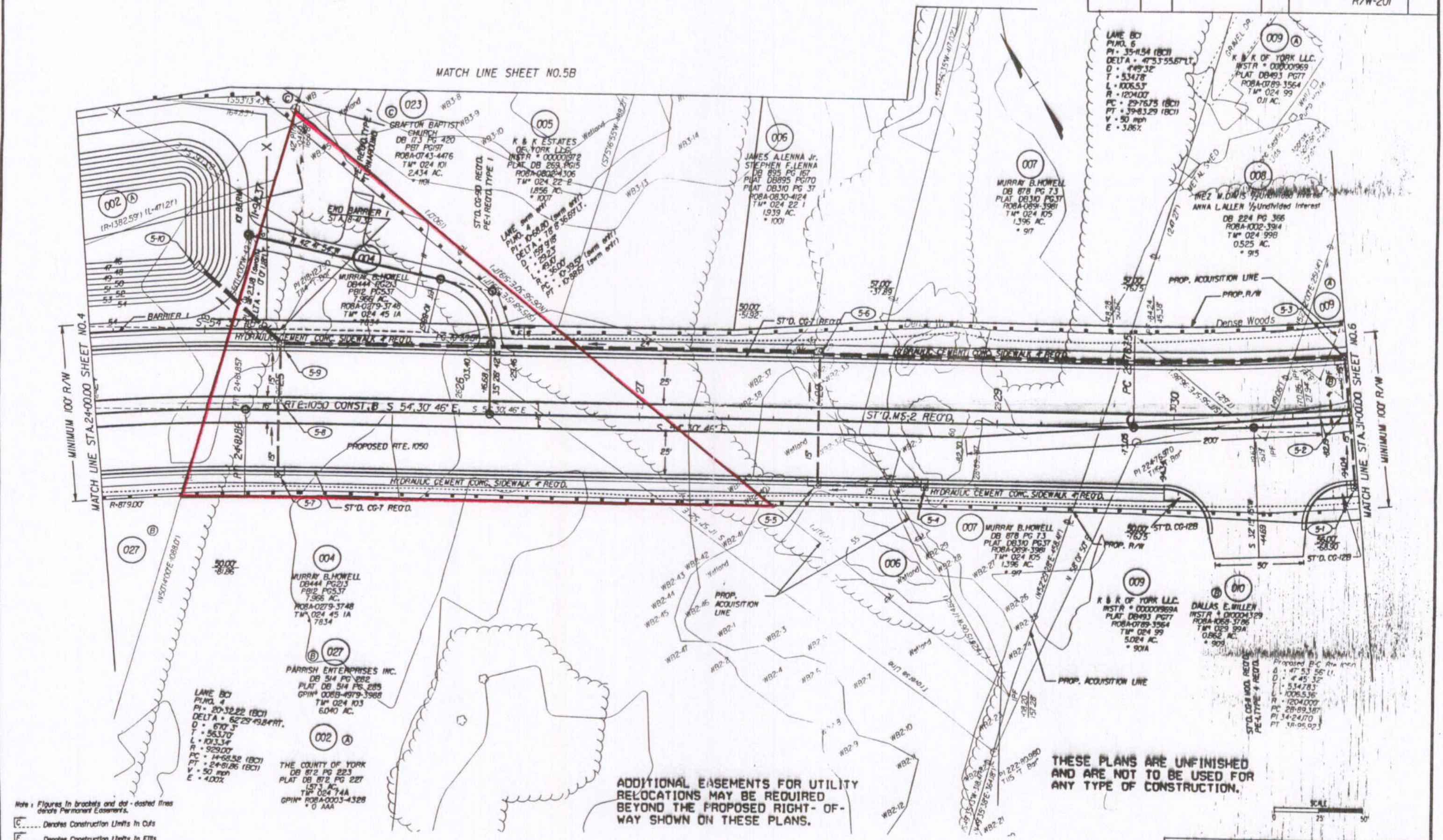
Design File - c:\documents of ms_jacob\4627\414627\414627005.dgn Ref. File - c:\documents of ms_jacob\4627\414627\414627005.dgn Levels On - 150.52-63
 Ref. File - c:\documents of ms_jacob\4627\414627\414627006.dgn Levels On - 163
 Ref. File - c:\documents of ms_jacob\4627\414627\414627007.dgn Levels On - 163
 Ref. File - c:\documents of ms_jacob\4627\414627\414627008.dgn Levels On - 163
 Ref. File - c:\documents of ms_jacob\4627\414627\414627009.dgn Levels On - 163

SURVEYED BY: ROBERT D. HAMMON
 SUPERVISED BY: SONJA HALLUMS-PONTON (757) 925-2560
 DESIGNED BY: J. DIANE GEORGE (757) 925-3622
 HAMPTON ROADS DISTRICT DESIGN UNIT

DESIGN FEATURES RELATING TO CONSTRUCTION OR TO REGULATION AND CONTROL OF TRAFFIC MAY BE SUBJECT TO CHANGE AS DEEMED NECESSARY BY THE DEPARTMENT

REVISED	STATE	FEDERAL AID	ROUTE	STATE PROJECT	SHEET NO.
KD-14-04	VA.		1050	1050-099-180.C-501 R/W-201	5

2005 MAY 17 PM 3:58



Note: Figures in brackets and dot-dashed lines denote Permanent Easements.
 [C] Denotes Construction Limits in Cuts
 [E] Denotes Construction Limits in Fills
 NOTE: SEE GENERAL NOTES FOR E&S LEGEND

THESE PLANS ARE UNFINISHED AND ARE NOT TO BE USED FOR ANY TYPE OF CONSTRUCTION.

PLAN NO.	PROJECT	FILE NO.	SHEET NO.
	1050-099-180		5