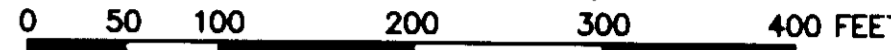


EXHIBIT "C"

PLAT OF VILLAS ON SHADY BANKS A CONDOMINIUM PHASE IV

(PROP. REF.: D.B. 54, P.107; D.B. 968, PGS.532-550) (INSTR. #050004943; INSTR. #030021817) SHEET 2 OF 4

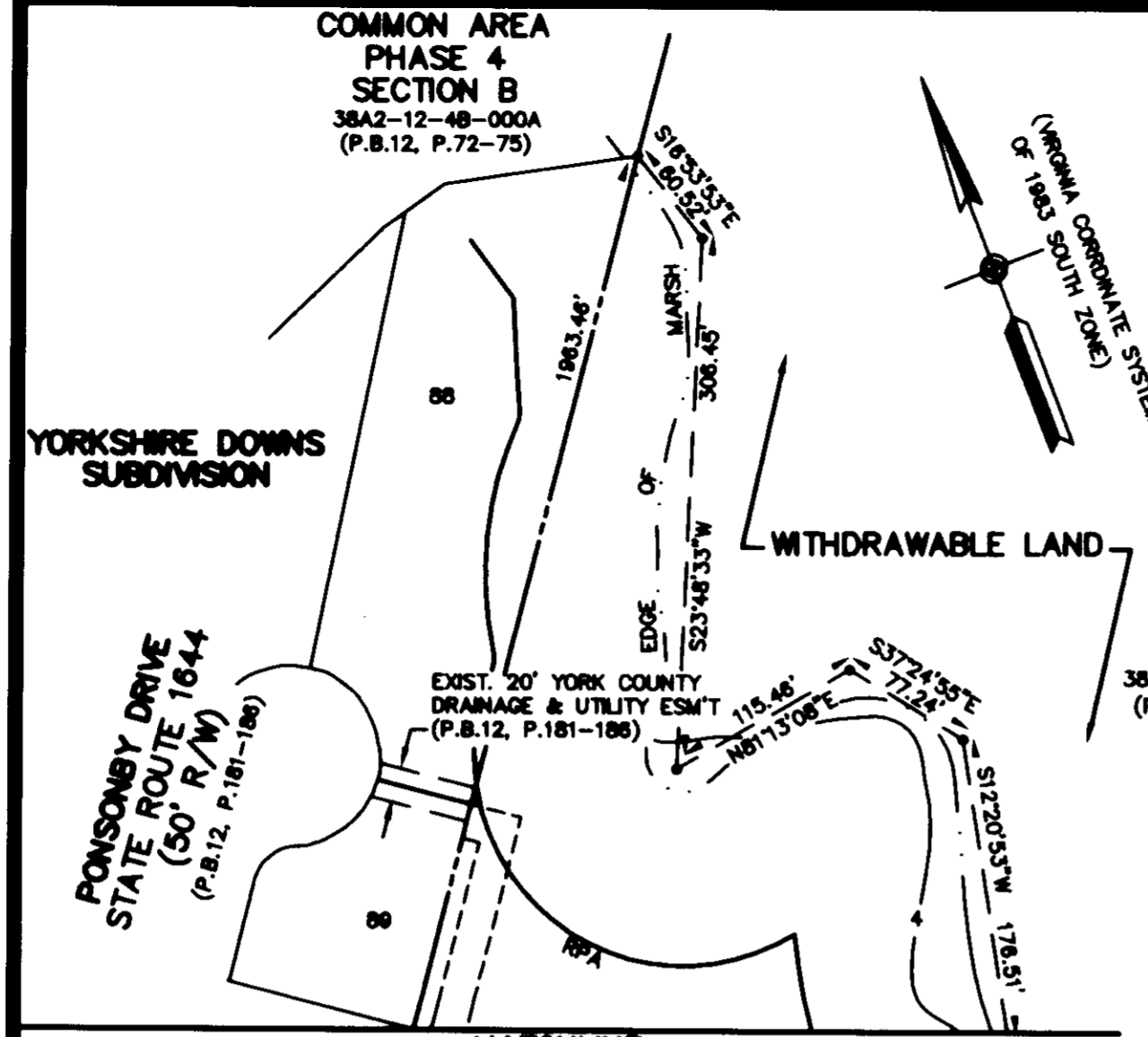
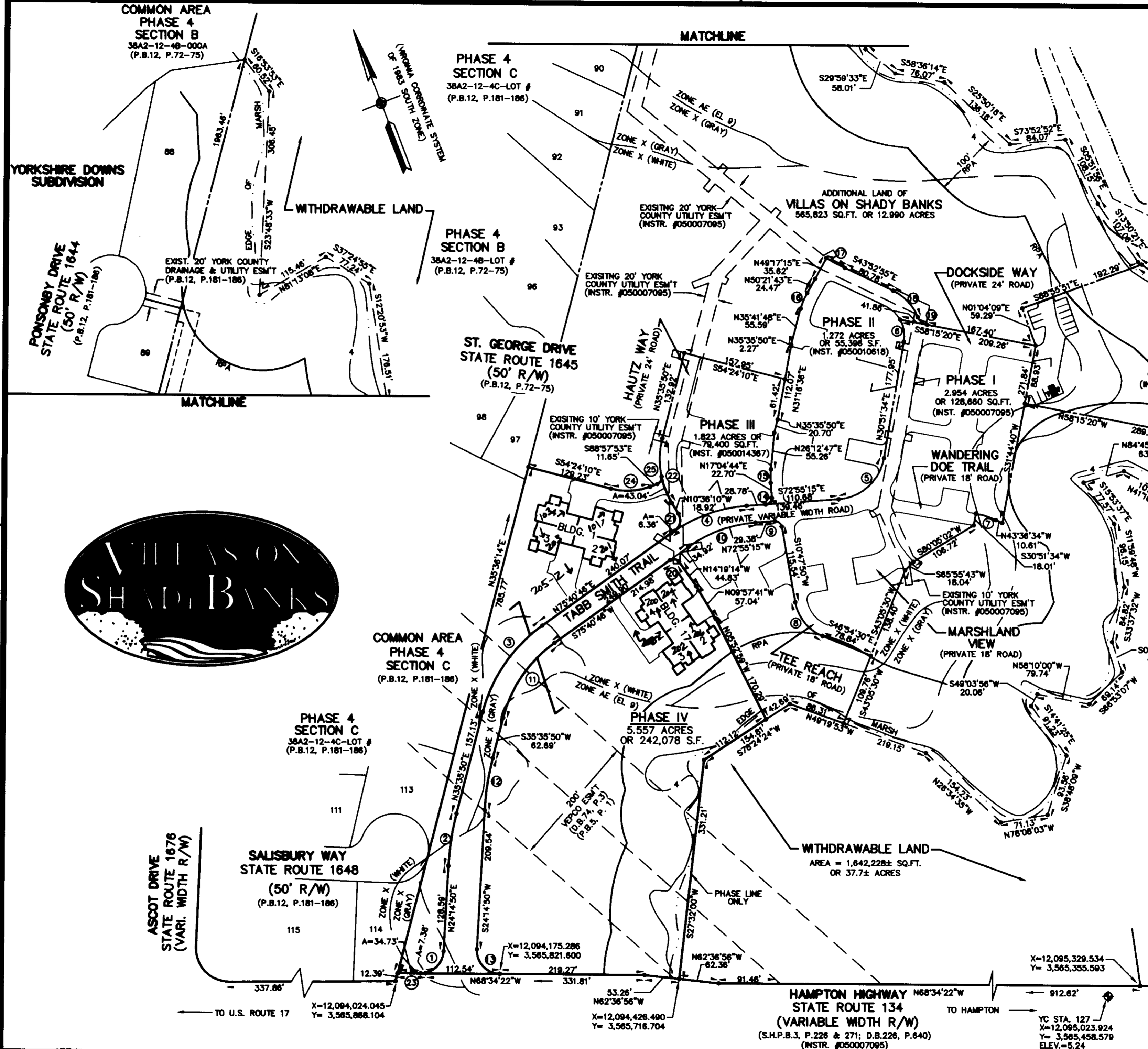
BETHEL DISTRICT - COUNTY OF YORK, VIRGINIA SCALE: 1" = 100' JUNE 10, 2005



GRAPHIC SCALE

THE SIRINE GROUP, LTD.

SURVEYORS • ENGINEERS • PLANNERS 4794 GEORGE WASHINGTON MEMORIAL HIGHWAY P.O. BOX 450, U.S. ROUTE 17 WHITE MARSH, VIRGINIA 23183 (804) 693-9548



APPROVED: YORK COUNTY BOARD OF SUPERVISORS BY: *Al Maddalena* PLAT APPROVING AGENT DATE: 7/26/05

STATE OF VIRGINIA COUNTY OF YORK IN THE CLERK'S OFFICE OF THE CIRCUIT COURT FOR YORK COUNTY-POQUOSON THE 21<sup>ST</sup> DAY OF July, 2005, THIS PLAT WAS PRESENTED AND ADMITTED TO RECORD AS THE LAW DIRECTS AS INSTRUMENT NO. 050018312.

TESTE: *Lynn S. Jenkins* CLERK BY: *June Brogan* DEPUTY CLERK

PROPERTY IS ASSESSOR'S PARCEL 38A2-01-00-005 GPIN: W02C-0155-1805