

THE UNDERSIGNED CERTIFIES THAT THIS PLAN IS ACCURATE AND COMPLIES WITH THE PROVISIONS OF THE CODE OF VIRGINIA SECTION 55-79.58 (b) AND ALL UNITS DEPICTED HEREON HAVE BEEN SUBSTANTIALLY COMPLETED.

SIGNED: C.L. Pittman DATE: 7/18/2005
C.L. PITTMAN, P.E.

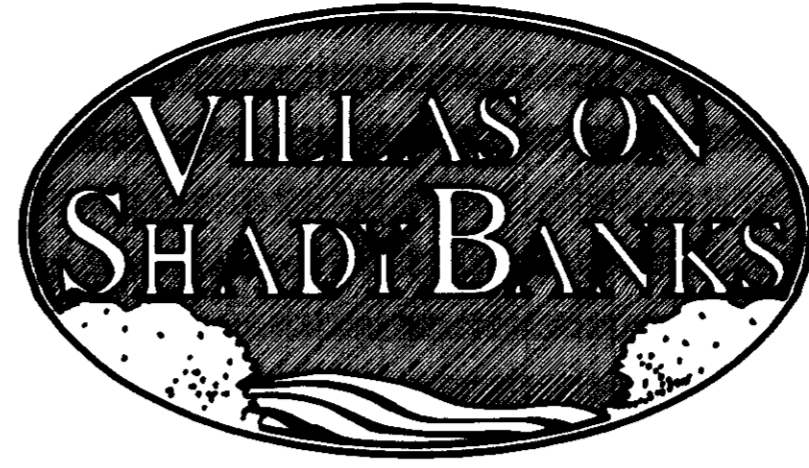
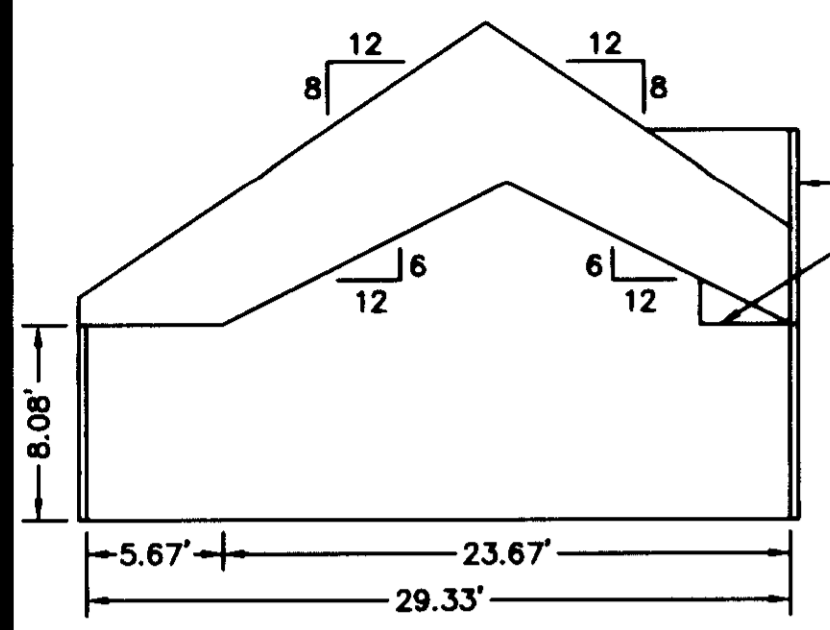


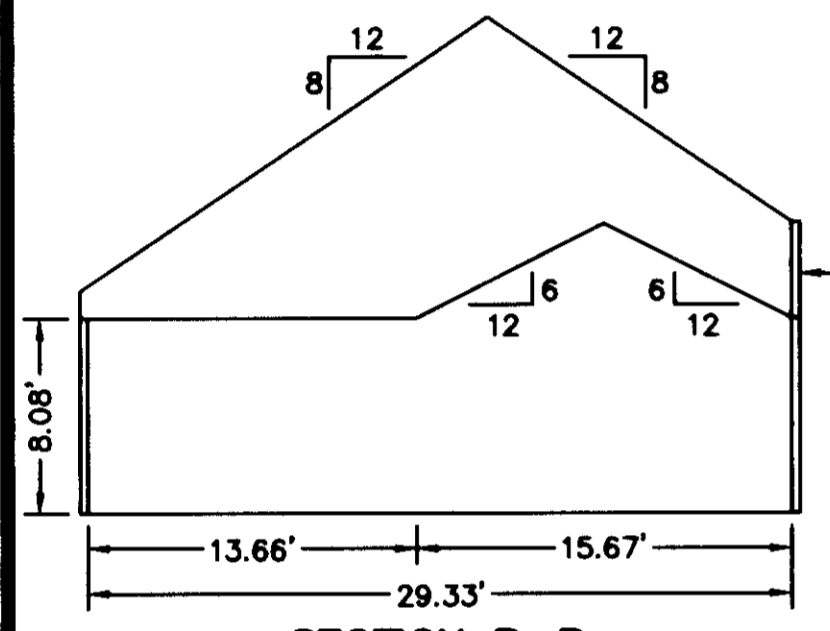
EXHIBIT "D"
PLAT OF
VILLAS ON SHADY BANKS
A CONDOMINIUM
PHASE IV
SHEET 4 OF 4

BETHEL DISTRICT - COUNTY OF YORK, VIRGINIA
SCALE: 1/8" = 1'-0" JUNE 10, 2005
0 4 8 16 24 32 FEET
GRAPHIC SCALE

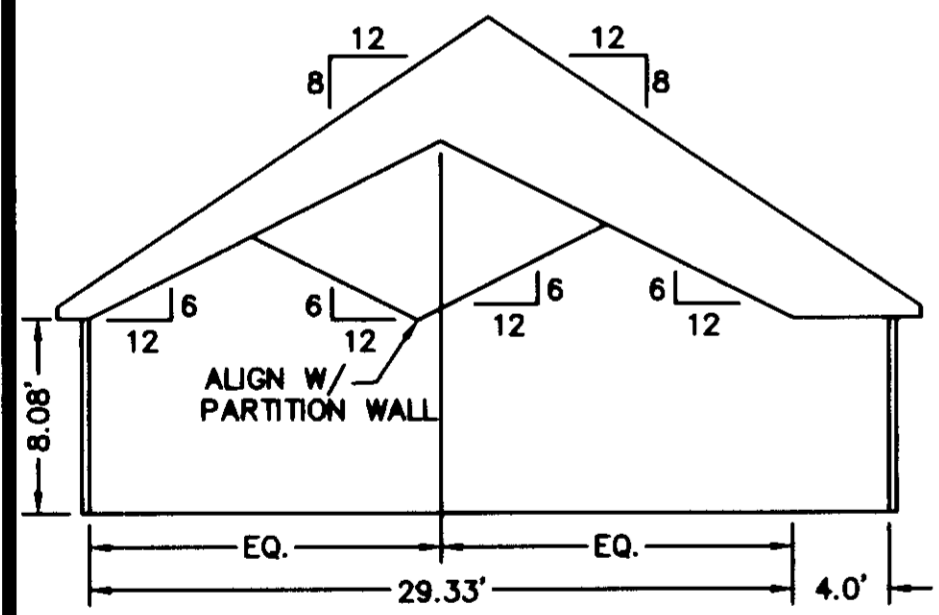
THE SIRINE GROUP, LTD.
SURVEYORS • ENGINEERS • PLANNERS
4794 GEORGE WASHINGTON MEMORIAL HIGHWAY
P.O. BOX 450, U.S. ROUTE 17
WHITE MARSH, VIRGINIA 23183
(804) 693-9548



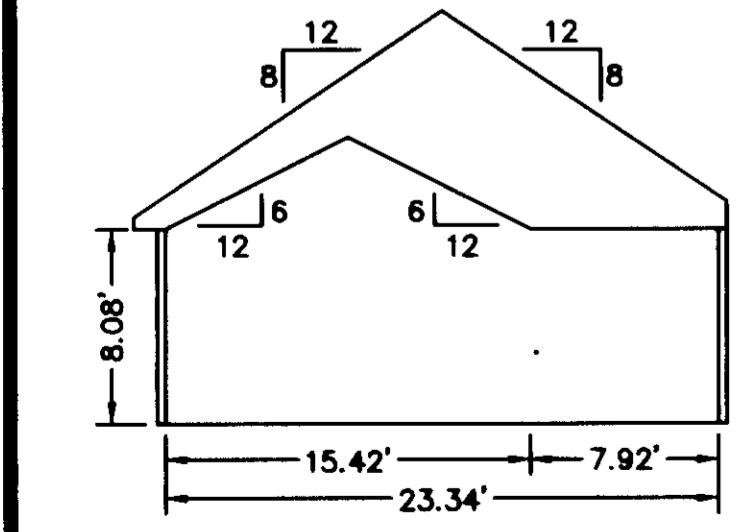
SECTION A-A



SECTION B-B

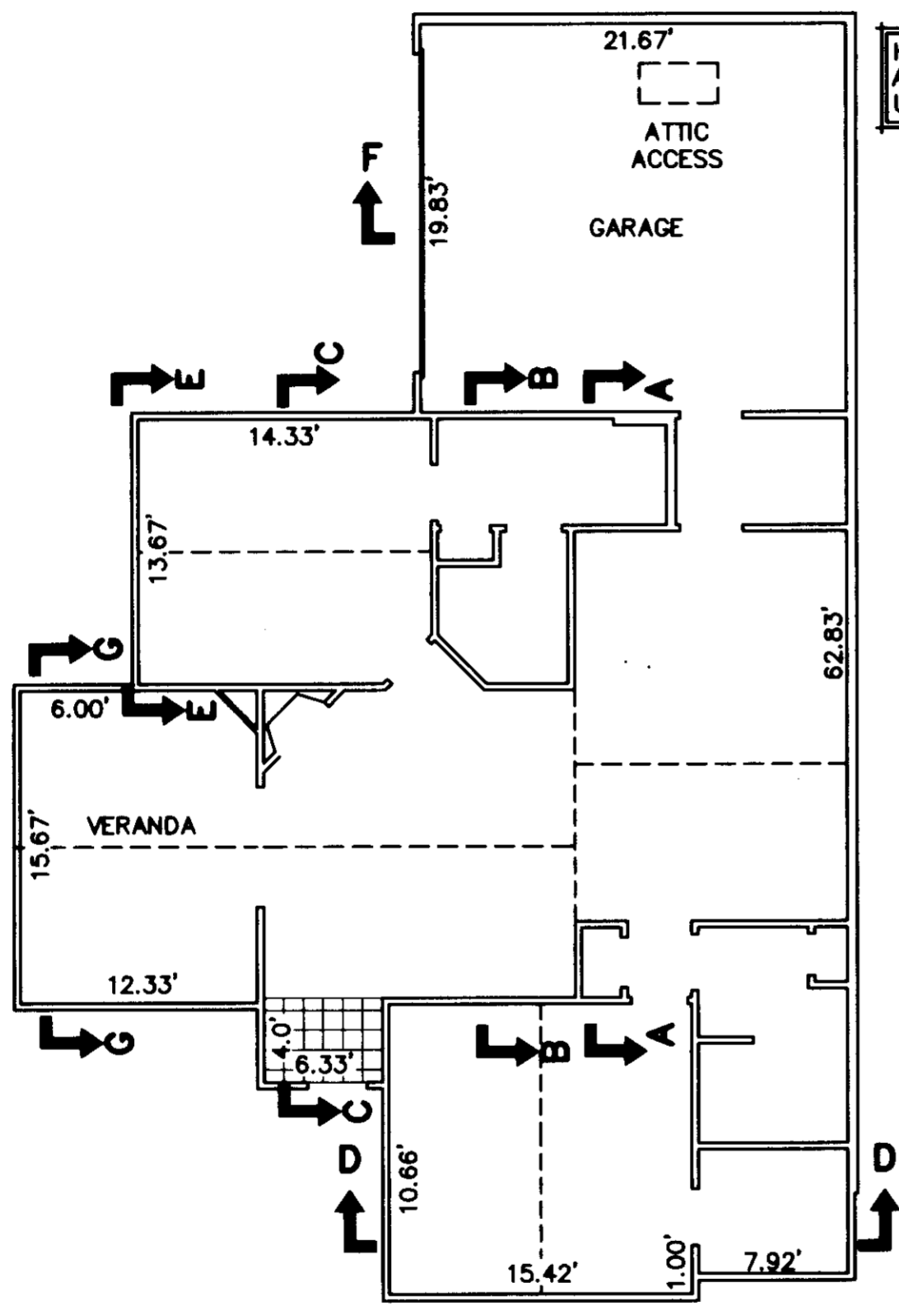


SECTION C-C

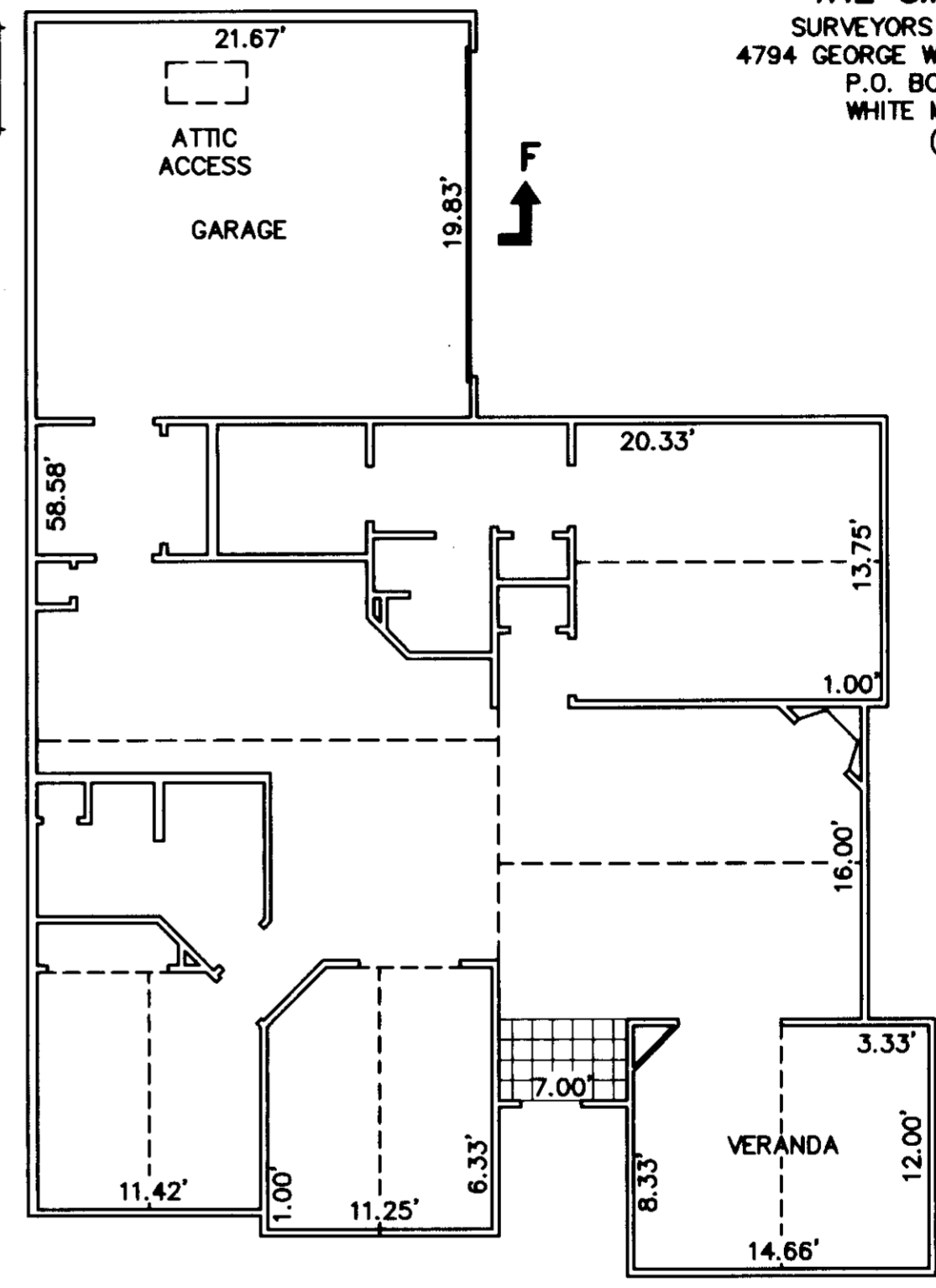


SECTION D-D

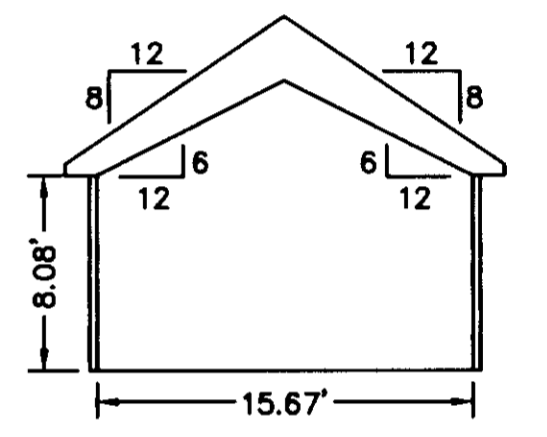
CARRIER TRUSS
CONVENTIONAL FRAME
DOWN WHERE REQ'D.



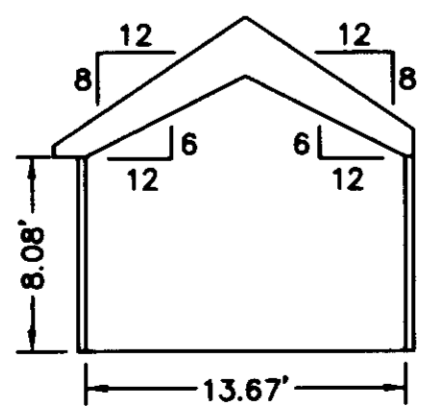
**BUILDING 1-2, 1-4,
17-2 & 17-4 ABBEY
FLOOR PLAN**



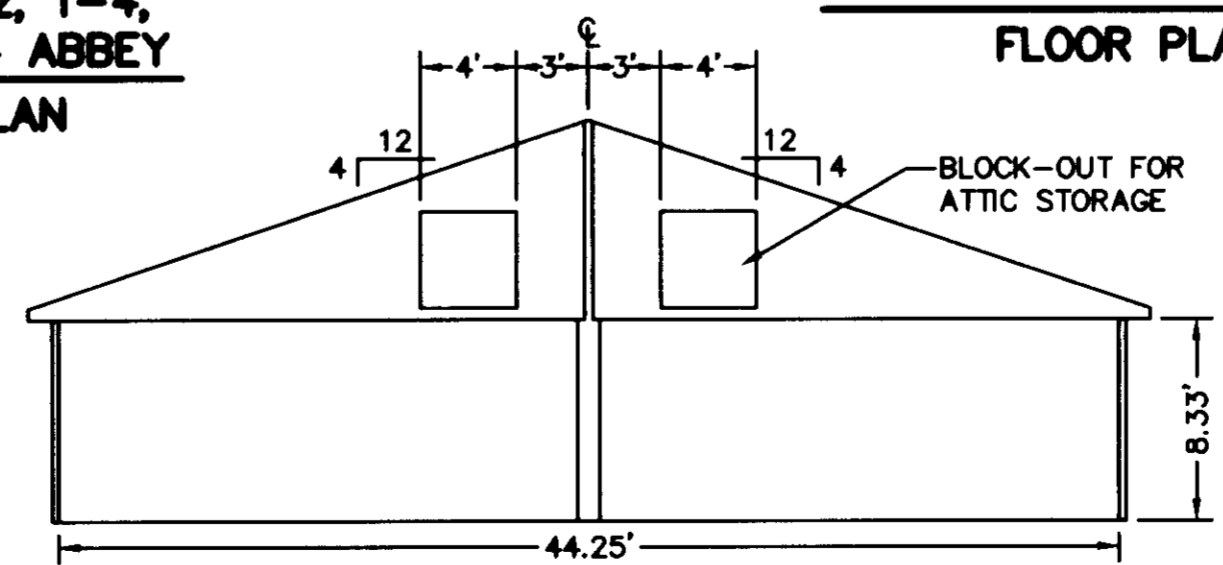
**BUILDING 1-1, 1-3,
17-1 & 17-3 CANTERBURY
FLOOR PLAN**



SECTION G-G



SECTION E-E



SECTION F-F

APPROVED:
YORK COUNTY BOARD OF SUPERVISORS

BY: Al. Maddalena
PLAT APPROVING AGENT

DATE: 7/26/05

NOTES:
1. ALL BUILDING DIMENSIONS SHOWN HEREON ARE INTERIOR DIMENSIONS AND ARE IN FEET.

STATE OF VIRGINIA
COUNTY OF YORK

IN THE CLERK'S OFFICE OF THE CIRCUIT COURT FOR YORK COUNTY-
POQUOSON, VIRGINIA, THIS 27th DAY OF July, 2005,
THIS PLAT WAS PRESENTED AND ADMITTED TO RECORD AS THE
LAW DIRECTS AS INSTRUMENT NUMBER 050018312

TESTE: Lynn S. Jenkins
CLERK

BY: Ana Braden
DEPUTY CLERK

12:04 pm