

BOUNDARY LINE ADJUSTMENT
 BETWEEN
PARCEL 2
 PROPERTY OF BULIFANTS, L.P.
 AND
PARCEL 24
 INTERNATIONAL CENTER WILLIAMSBURG,
 PHASE II

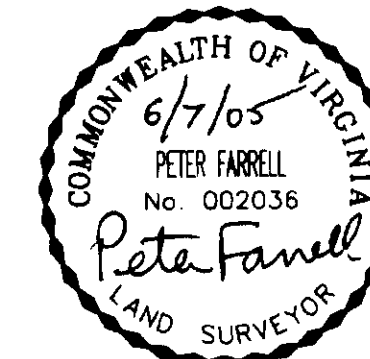
BRUTON DISTRICT YORK COUNTY, VIRGINIA
 DATE: 06/07/05 SCALE: 1"=100'

SHEET 2 OF 2

LEGEND

- CMS CONCRETE MONUMENT TO BE SET
- CMF CONCRETE MONUMENT FOUND
- IRS IRON ROD TO BE SET
- IRF IRON ROD FOUND
- IPF IRON PIPE FOUND
- RPA RESOURCE PROTECTION AREA

PARCEL 2
 OLD AREA=88.22± AC.
 NEW AREA=85.98± AC.
 PROPERTY OF
 BULIFANTS LP
 (D.B. 433 PG.163)
 GPIN#:C19C-2165-1207
 TAX PARCEL 02-00-00-034A2
 ZONING: EO



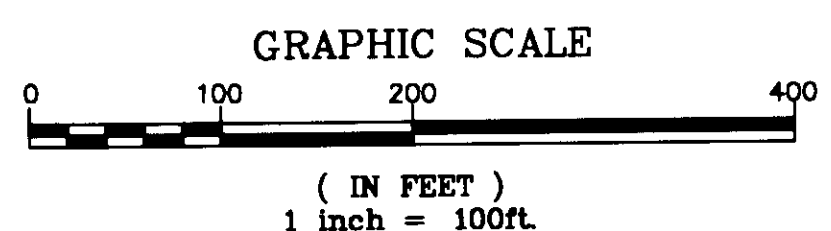
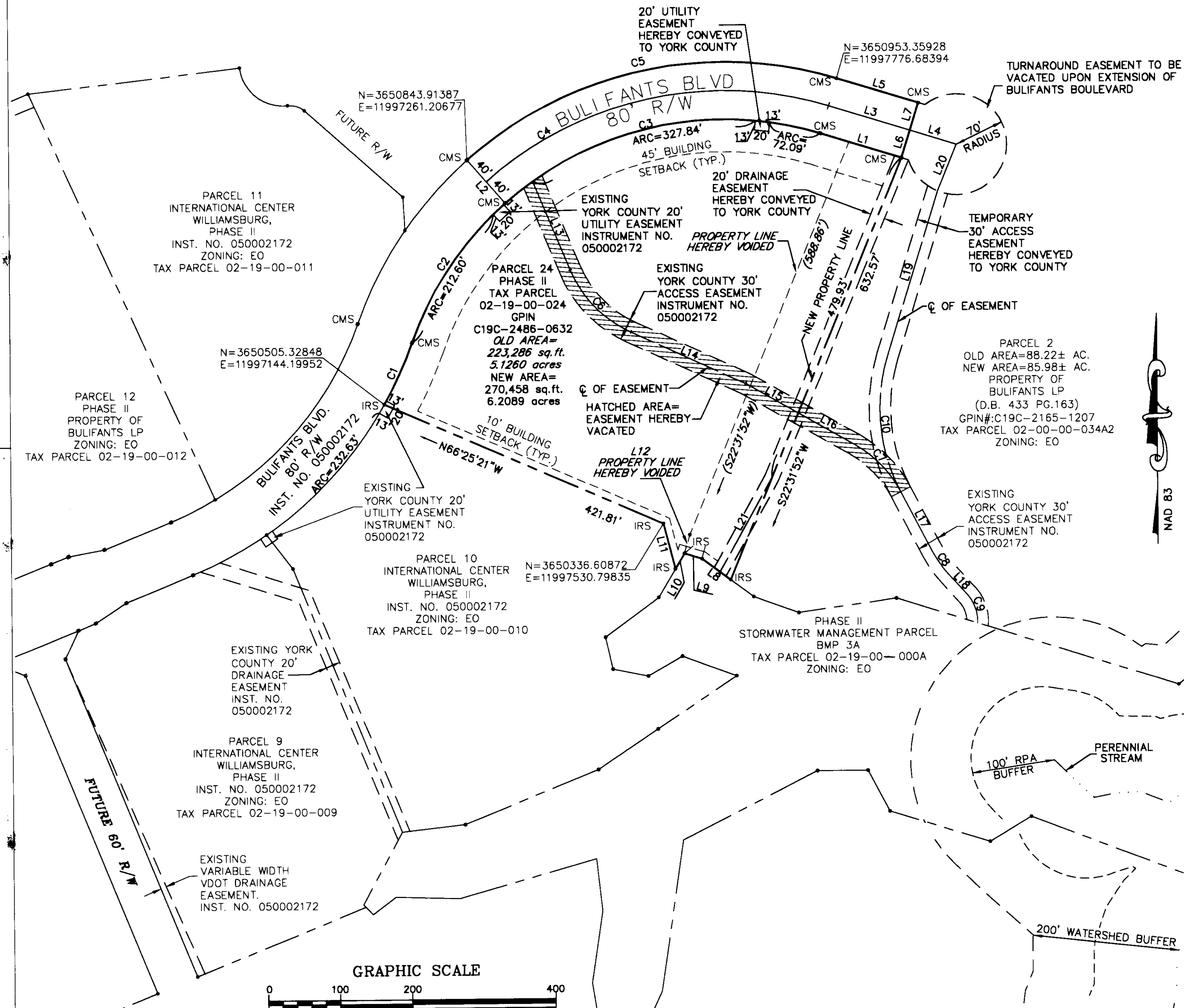
LANDMARK
DESIGN GROUP
 Engineers • Planners • Surveyors
 Landscape Architects • Environmental Consultants
 4029 IRONBOUND ROAD SUITE 100
 WILLIAMSBURG, VIRGINIA 23188
 (757) 253-2975 FAX: (757) 229-0049

LINE TABLE		
LINE	LENGTH	BEARING
L1	118.31'	S72°47'00"E
L2	80.00'	S41°11'30"E
L3	118.31'	N72°47'00"W
L4	67.45'	S72°47'00"E
L5	118.30'	S72°47'00"E
L6	40.00'	S17°13'00"W
L7	40.00'	S17°13'00"W
L8	49.36'	N53°06'12"W
L9	25.63'	N73°09'14"W
L10	25.00'	S30°42'44"W
L11	65.40'	N14°12'10"W
L12	27.07'	S16°50'46"W
L13	134.12'	S22°29'50"E
L14	175.26'	S65°23'25"E
L15	83.64'	S60°24'15"E
L16	88.80'	S60°24'15"E
L17	94.87'	S27°27'38"E
L18	39.00'	S42°07'27"E
L19	239.27'	N17°13'04"E
L20	70.00'	N22°27'01"E
L21	147.85'	S29°18'03"W

CURVE TABLE						
CURVE	LENGTH	RADIUS	TANGENT	CHORD	CHORD BEARING	DELTA
C1	94.18'	540.00'	47.21'	94.06'	N24°28'23"E	9°59'32"
C2	235.49'	460.00'	120.38'	232.92'	N34°08'33"E	29°19'53"
C3	468.94'	460.00'	257.14'	448.90'	N78°00'47"E	58°24'35"
C4	509.72'	500.00'	279.50'	487.93'	S78°00'47"W	58°24'35"
C5	550.50'	540.00'	301.86'	526.97'	N78°00'47"E	58°24'35"
C6	123.52'	165.00'	64.82'	120.66'	S43°56'38"E	42°53'35"
C7	94.87'	165.00'	48.79'	93.57'	N43°55'57"W	32°56'37"
C8	38.39'	150.00'	19.30'	38.28'	S34°47'33"E	14°39'49"
C9	41.80'	53.61'	22.03'	40.75'	N19°10'21"W	44°40'15"
C10	194.95'	250.00'	102.73'	190.04'	S05°07'17"E	44°40'43"

APPROVED: YORK COUNTY BOARD OF SUPERVISORS
 BY: Al Madalena
 PLAT APPROVING AGENT
 DATE: 8/12/05

STATE OF VIRGINIA, COUNTY OF YORK
 IN THE CLERK'S OFFICE OF THE CIRCUIT COURT FOR THE COUNTY OF YORK-POQUOSON THE 16th DAY OF August 2005, THIS MAP WAS PRESENTED AND ADMITTED TO RECORD AS THE LAW DIRECTS AS INSTRUMENT NO. 050002172
 TESTE: Lynn S. Jenkins
 CLERK
 BY: Andalaw M. Shinnonard, Jr.



2005 AUG 16 PM 12:38

1980241-009.06 International CNTR PH2 SUBDIVISION PLAT\CPH2-AMENDED-LOT-2.dwg