

THE UNDERSIGNED CERTIFIES THAT THIS PLAN IS ACCURATE AND COMPLIES WITH THE PROVISIONS OF THE CODE OF VIRGINIA SECTION 55-79.58 (b) AND ALL UNITS DEPICTED HEREON HAVE BEEN SUBSTANTIALLY COMPLETED.

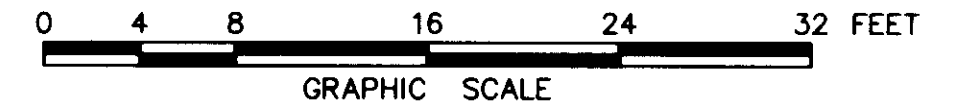
SIGNED: C.L. Pittman DATE: 8/23/2005
C.L. PITTMAN, P.E.



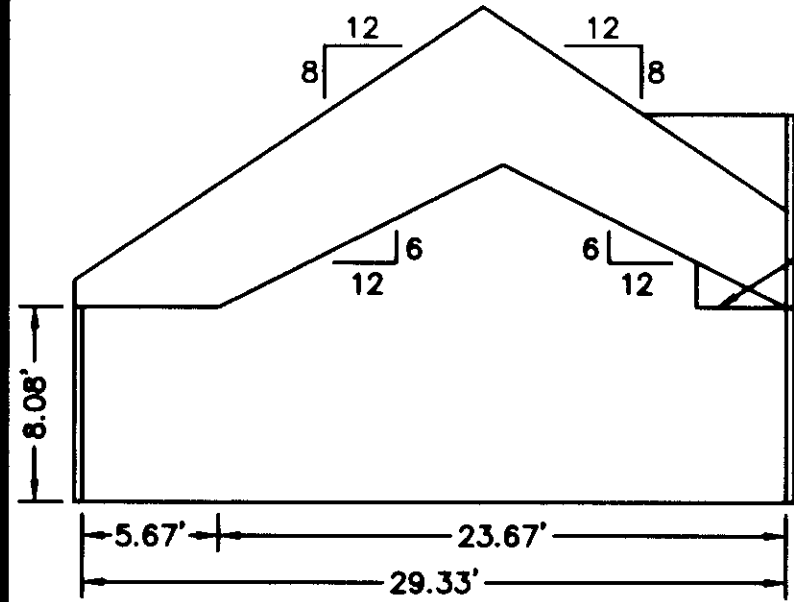
EXHIBIT "D"

PLAT OF
VILLAS ON SHADY BANKS
A CONDOMINIUM
PHASE V
SHEET 4 OF 4

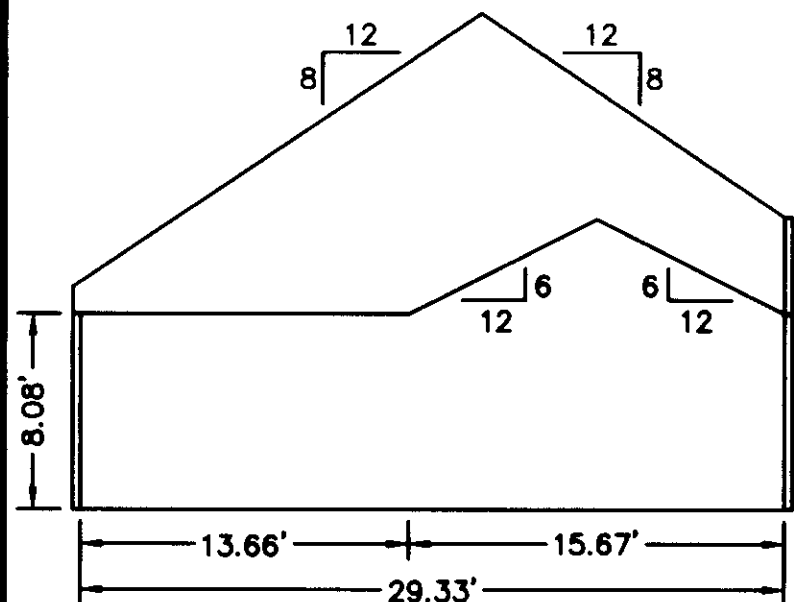
BETHEL DISTRICT - COUNTY OF YORK, VIRGINIA
SCALE: 1/8" = 1'-0" AUGUST 5, 2005



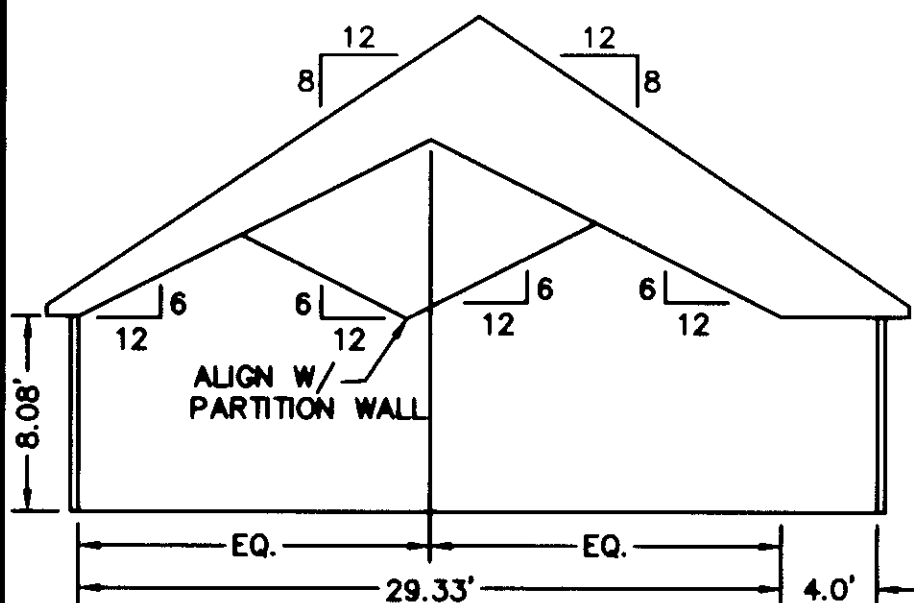
THE SIRINE GROUP, LTD.
SURVEYORS • ENGINEERS • PLANNERS
4794 GEORGE WASHINGTON MEMORIAL HIGHWAY
P.O. BOX 450, U.S. ROUTE 17
WHITE MARSH, VIRGINIA 23183
(804) 693-9548



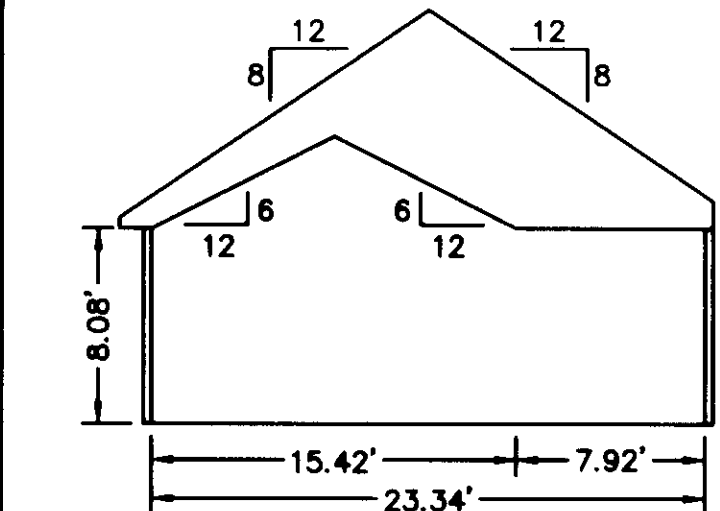
SECTION A-A



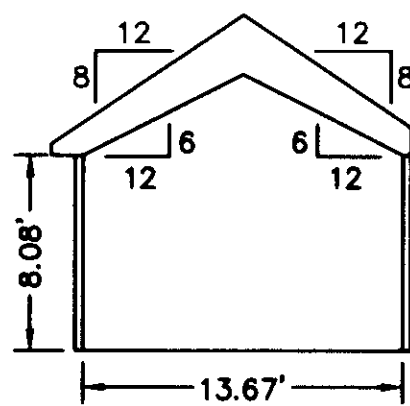
SECTION B-B



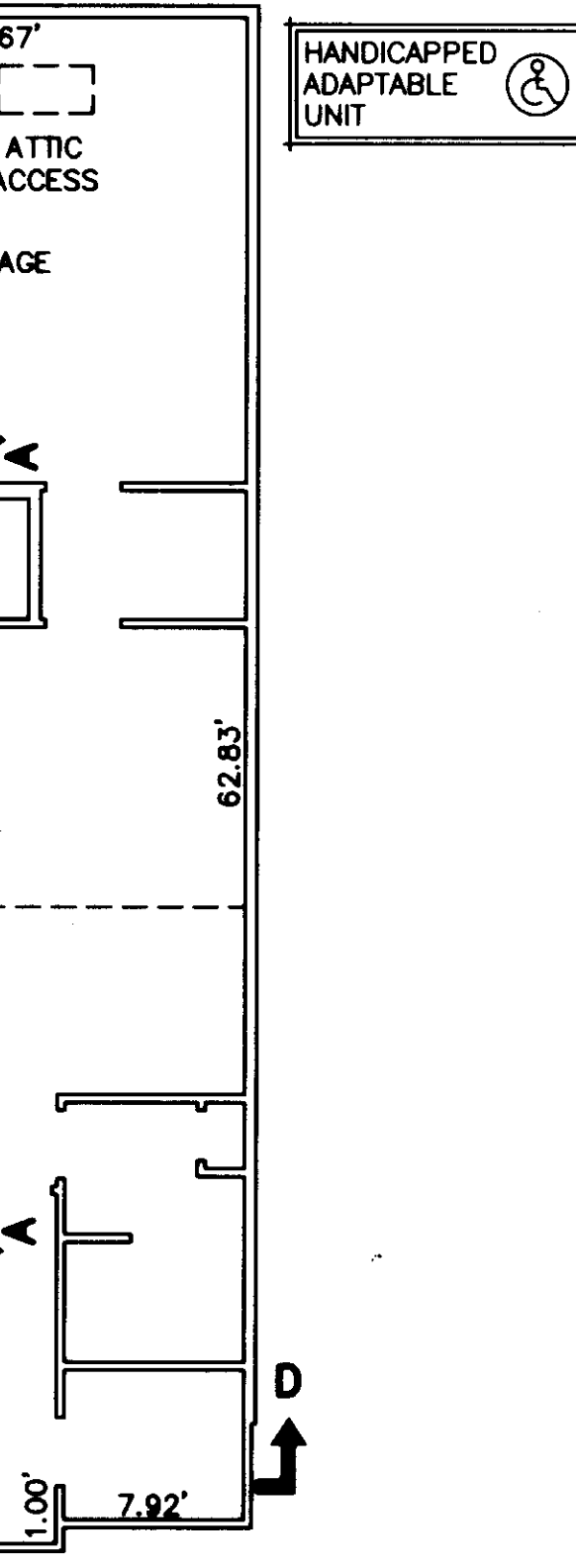
SECTION C-C



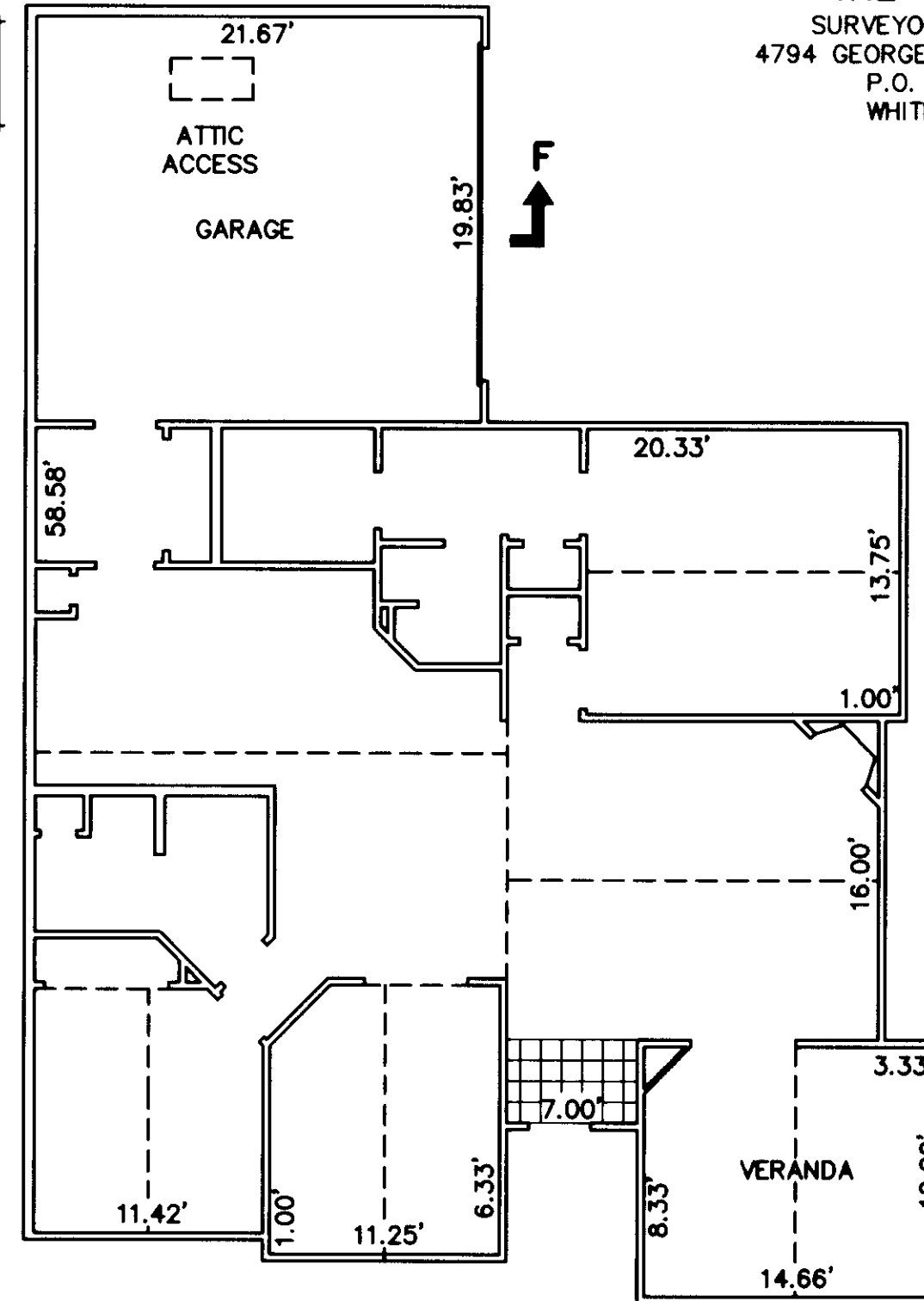
SECTION D-D



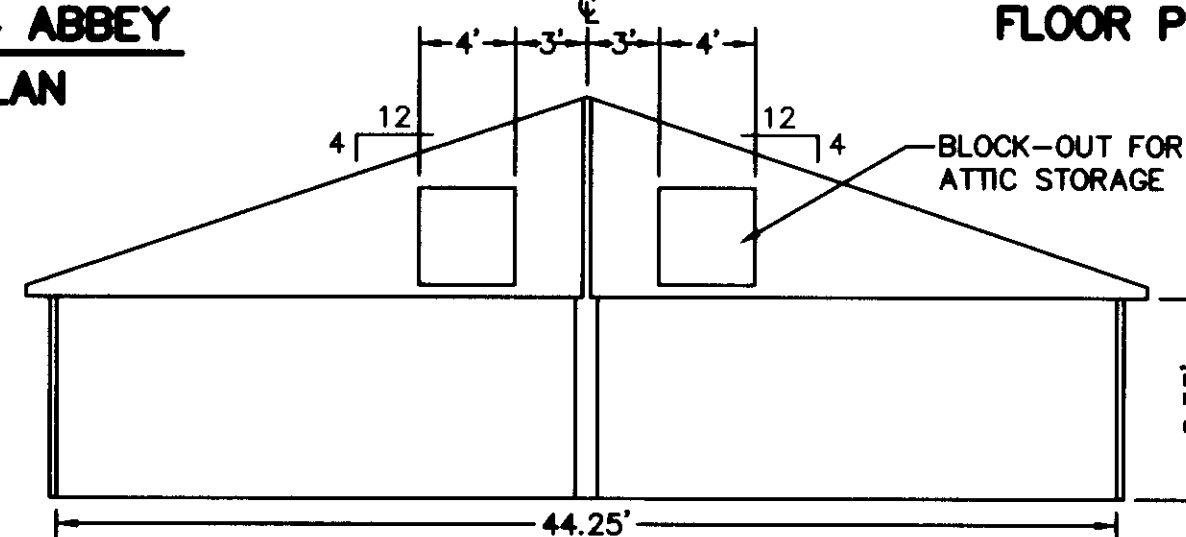
SECTION E-E



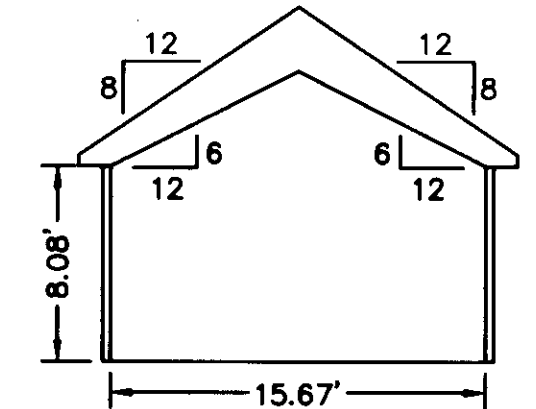
BUILDING 9-2, 9-4
10-2 & 10-4 ABBEY
FLOOR PLAN



BUILDING 9-1, 9-3
10-1 & 10-3 CANTERBURY
FLOOR PLAN



SECTION F-F



SECTION G-G



APPROVED:
YORK COUNTY BOARD OF SUPERVISORS

BY: Al Maddalena
PLAT APPROVING AGENT

DATE: 9/27/05

NOTES:
1. ALL BUILDING DIMENSIONS SHOWN HEREON ARE INTERIOR DIMENSIONS AND ARE IN FEET.

STATE OF VIRGINIA
COUNTY OF YORK

IN THE CLERK'S OFFICE OF THE CIRCUIT COURT FOR YORK COUNTY-
POQUOSON, VIRGINIA, THIS 27th DAY OF October, 2005,
THIS PLAT WAS PRESENTED AND ADMITTED TO RECORD AS THE
LAW DIRECTS AS INSTRUMENT NUMBER 850024629

10:55 AM

TESTE: Lynn S. Jenkins
CLERK

BY: Archie M. Chirumana
DEPUTY CLERK