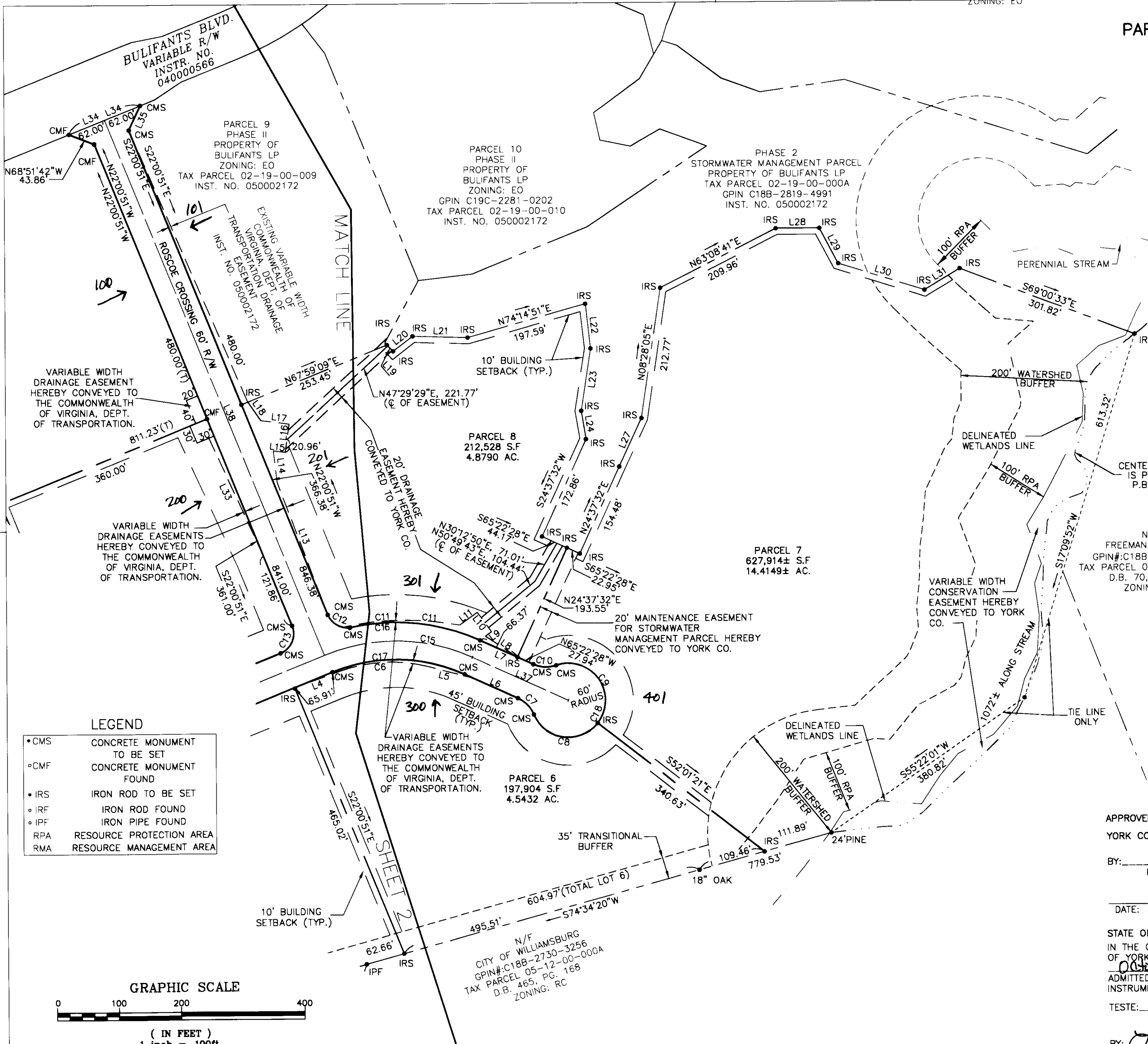


SUBDIVISION OF
PARCELS 2, 3, 4, 5, 6, 7 AND 8
 BEING
INTERNATIONAL CENTER
WILLIAMSBURG, PHASE III
 BRUTON DISTRICT YORK COUNTY, VIRGINIA
 DATE: 06/13/05 SCALE: 1" = 100'
 SHEET 3 OF 3

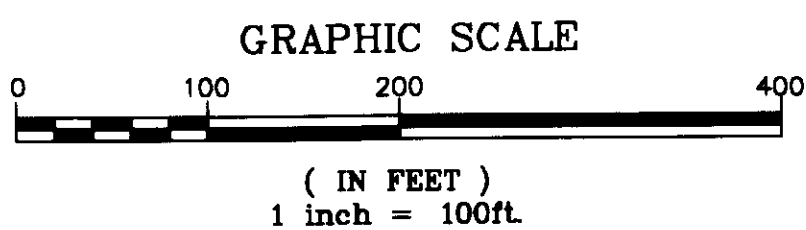


Engineers • Planners • Surveyors
 Landscape Architects • Environmental Consultants
 4029 IRONBOUND ROAD SUITE 100
 WILLIAMSBURG, VIRGINIA 23188
 (757) 253-2975 FAX: (757) 229-0049



LEGEND

- CMS CONCRETE MONUMENT TO BE SET
- CMF CONCRETE MONUMENT FOUND
- IRS IRON ROD TO BE SET
- IRF IRON ROD FOUND
- IPF IRON PIPE FOUND
- RPA RESOURCE PROTECTION AREA
- RMA RESOURCE MANAGEMENT AREA



APPROVED:
 YORK COUNTY BOARD OF SUPERVISORS
 BY: *Al Maddalena*
 PLAT APPROVING AGENT
 DATE: 10/10/05

STATE OF VIRGINIA, COUNTY OF YORK
 IN THE CLERK'S OFFICE OF THE CIRCUIT COURT FOR THE COUNTY OF YORK AND CITY OF POQUOSON THE 11th DAY OF October 2005, THIS MAP WAS PRESENTED AND ADMITTED TO RECORD AS THE LAW DIRECTS AS INSTRUMENT NO. WMA 05002374

TESTE: *Lynn S. Jenkins*
 CLERK
 BY: *Jana Boyer, D.C.* 12:13 pm

1980241-100.04 International Center PHIII Plat\CPHIIIPLAT.dwg