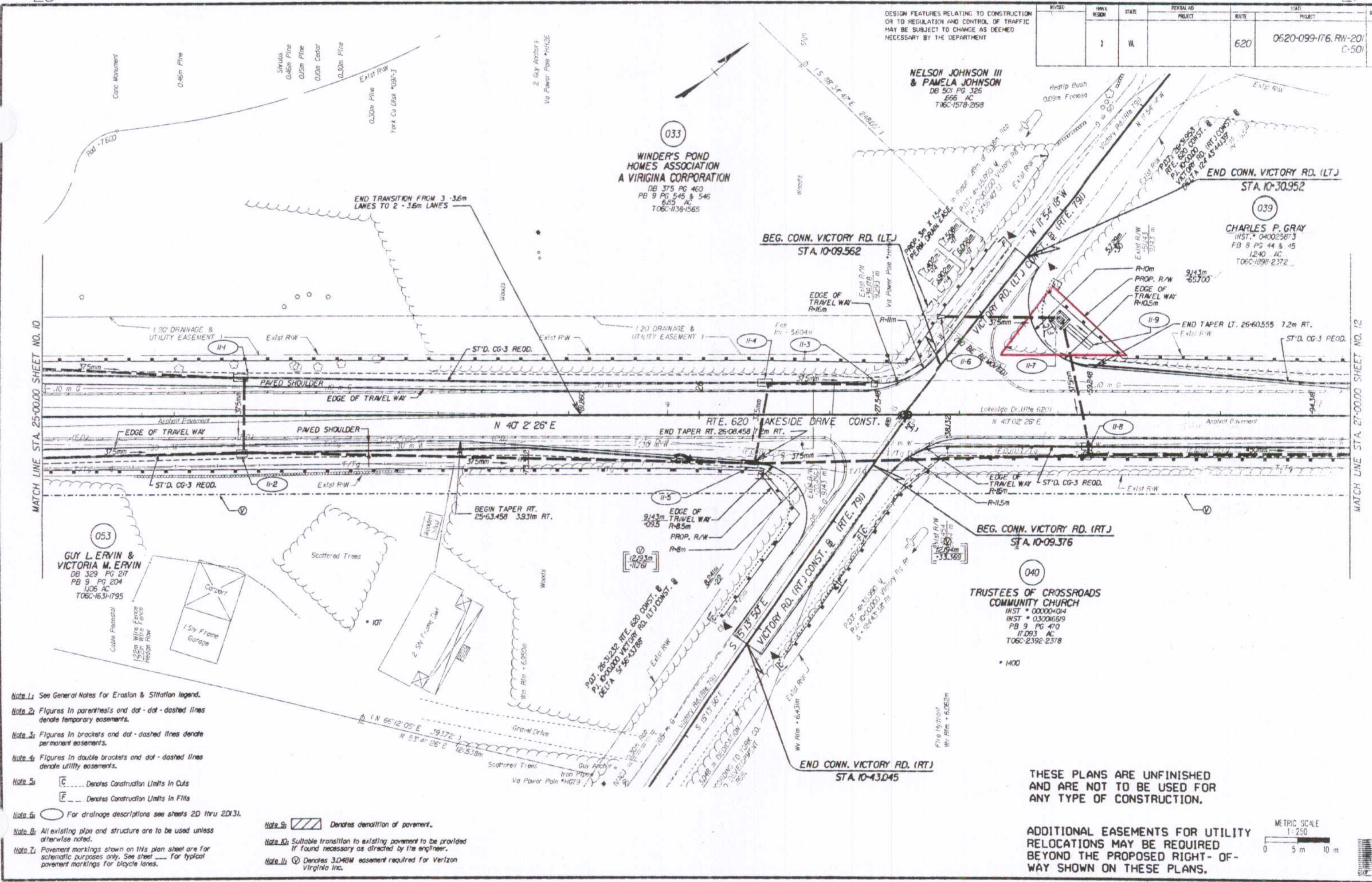


REVISED	HWY REGION	STATE	FEDERAL AID PROJECT	ROUTE	PROJECT	DATE
	I	VA		620	0620-099-176, RW-201 C-501	11

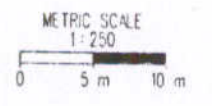
DESIGN FEATURES RELATING TO CONSTRUCTION OR TO REGULATION AND CONTROL OF TRAFFIC MAY BE SUBJECT TO CHANGE AS DEEMED NECESSARY BY THE DEPARTMENT



- Note 1: See General Notes for Erosion & Siltation legend.
- Note 2: Figures in parentheses and dot-dot-dashed lines denote temporary easements.
- Note 3: Figures in brackets and dot-dashed lines denote permanent easements.
- Note 4: Figures in double brackets and dot-dashed lines denote utility easements.
- Note 5: C..... Denotes Construction Limits in Cuts
E..... Denotes Construction Limits in Fills
- Note 6: () For drainage descriptions see sheets 2D thru 2Dx3.
- Note 7: All existing pipe and structure are to be used unless otherwise noted.
- Note 8: Pavement markings shown on this plan sheet are for schematic purposes only. See sheet _____ for typical pavement markings for bicycle lanes.
- Note 9: [Hatched] Denotes demolition of pavement.
- Note 10: Suitable transition to existing pavement to be provided if found necessary as directed by the engineer.
- Note 11: (V) Denotes 3.048M easement required for Verizon Virginia Inc.

THESE PLANS ARE UNFINISHED AND ARE NOT TO BE USED FOR ANY TYPE OF CONSTRUCTION.

ADDITIONAL EASEMENTS FOR UTILITY RELOCATIONS MAY BE REQUIRED BEYOND THE PROPOSED RIGHT-OF-WAY SHOWN ON THESE PLANS.



State Highway Plat Book No. 9 Page 167

0620-099-176

MATCH LINE STA. 27+00.00 SHEET NO. 12

MATCH LINE STA. 25+00.00 SHEET NO. 10