

HAMPTON ROADS DISTRICT DE UNIT

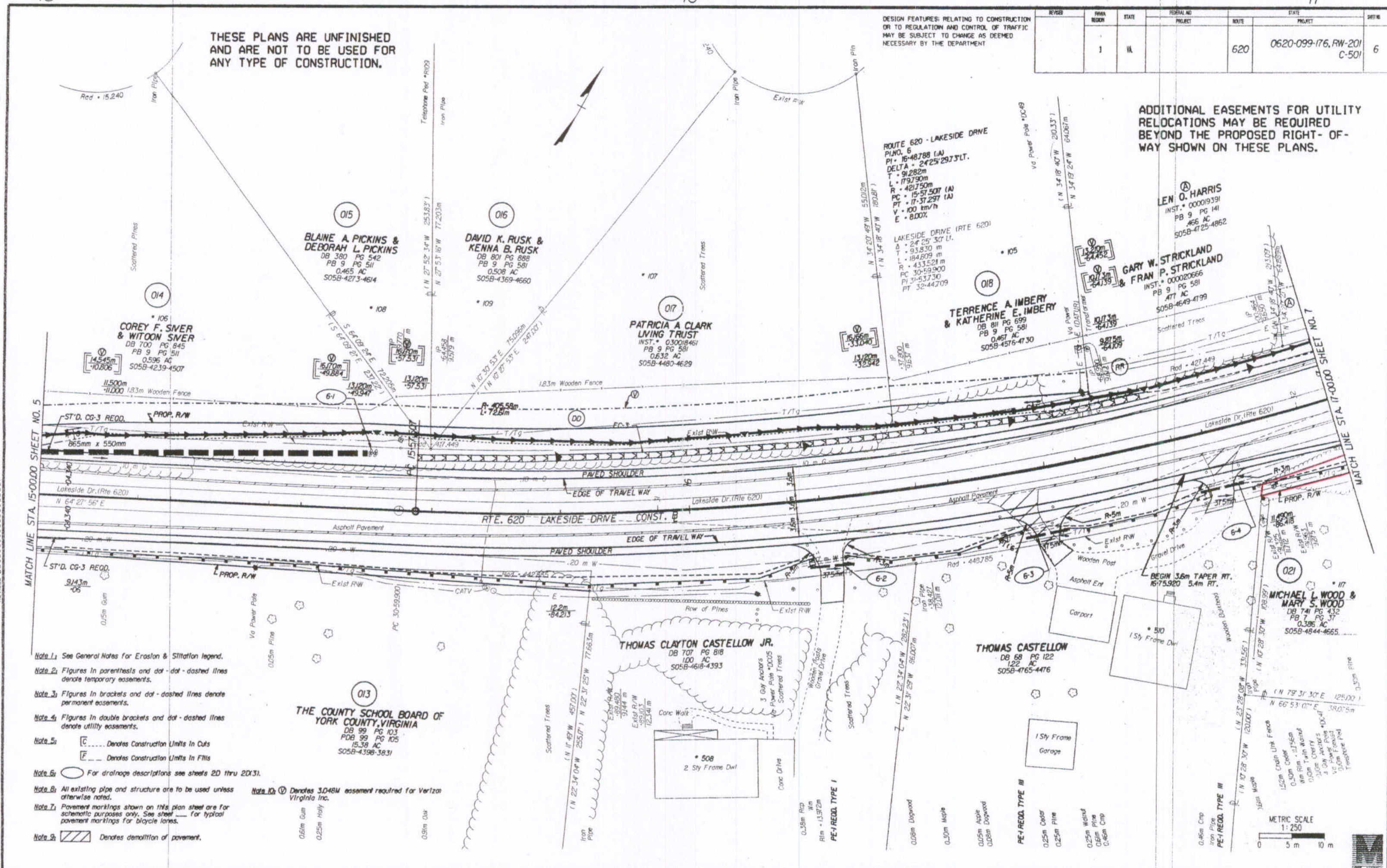
Design File - c:\documents\m... Ref. File - c:\documents\m... Levels On - 143

THESE PLANS ARE UNFINISHED AND ARE NOT TO BE USED FOR ANY TYPE OF CONSTRUCTION.

DESIGN FEATURES RELATING TO CONSTRUCTION OR TO REGULATION AND CONTROL OF TRAFFIC MAY BE SUBJECT TO CHANGE AS DEEMED NECESSARY BY THE DEPARTMENT

REVISION	FYMA REGION	STATE	FEDERAL NO. PROJECT	ROUTE	STATE PROJECT	SHEET
	1	VA		620	0620-099-176, RW-201 C-501	6

ADDITIONAL EASEMENTS FOR UTILITY RELOCATIONS MAY BE REQUIRED BEYOND THE PROPOSED RIGHT-OF-WAY SHOWN ON THESE PLANS.



SURVEYED BY - D. G. HARRIS, (72) 092-3057 SUPERVISED BY - CHELSEA STALLINGS (72) 092-3636 DESIGNED BY - LEE DUBERTSON (72) 092-3500 CAD OPERATOR - GREGORY J. HARRIS (72) 092-3057

2/1/2005 12:06:32