

10' STRIP HEREBY DEDICATED TO THE COMMONWEALTH OF VIRGINIA DEPARTMENT OF TRANSPORTATION FOR RIGHT-OF-WAY PURPOSES

**EAST YORKTOWN ROAD
STATE ROUTE 782
30' RW**

NOTE:
THIS PLAT DOES NOT REPRESENT A CURRENT FIELD SURVEY. ALL DATA SHOWN HEREON ARE FROM INSTRUMENT #020002598.

**PLAT SHOWING
BOUNDARY LINE ADJUSTMENT
BETWEEN LOT 2 AND LOT 3
SUBDIVISION OF THE PROPERTY OF
HATTIE MAE BANKS MIDDLETON, ET AL
BETHEL DISTRICT - YORK COUNTY, VIRGINIA**

AUGUST 1, 2005
SHEET 2 OF 2



GRAPHIC SCALE
SCALE: 1" = 100'



Simmons Newsome, P.C.
Engineers Surveyors Planners
110A Dare Road
Yorktown, Virginia 23692
Phone (757) 898-4914 Fax (757) 898-4914



APPROVED AS TO PORTION IN YORK COUNTY:
YORK COUNTY BOARD OF SUPERVISORS

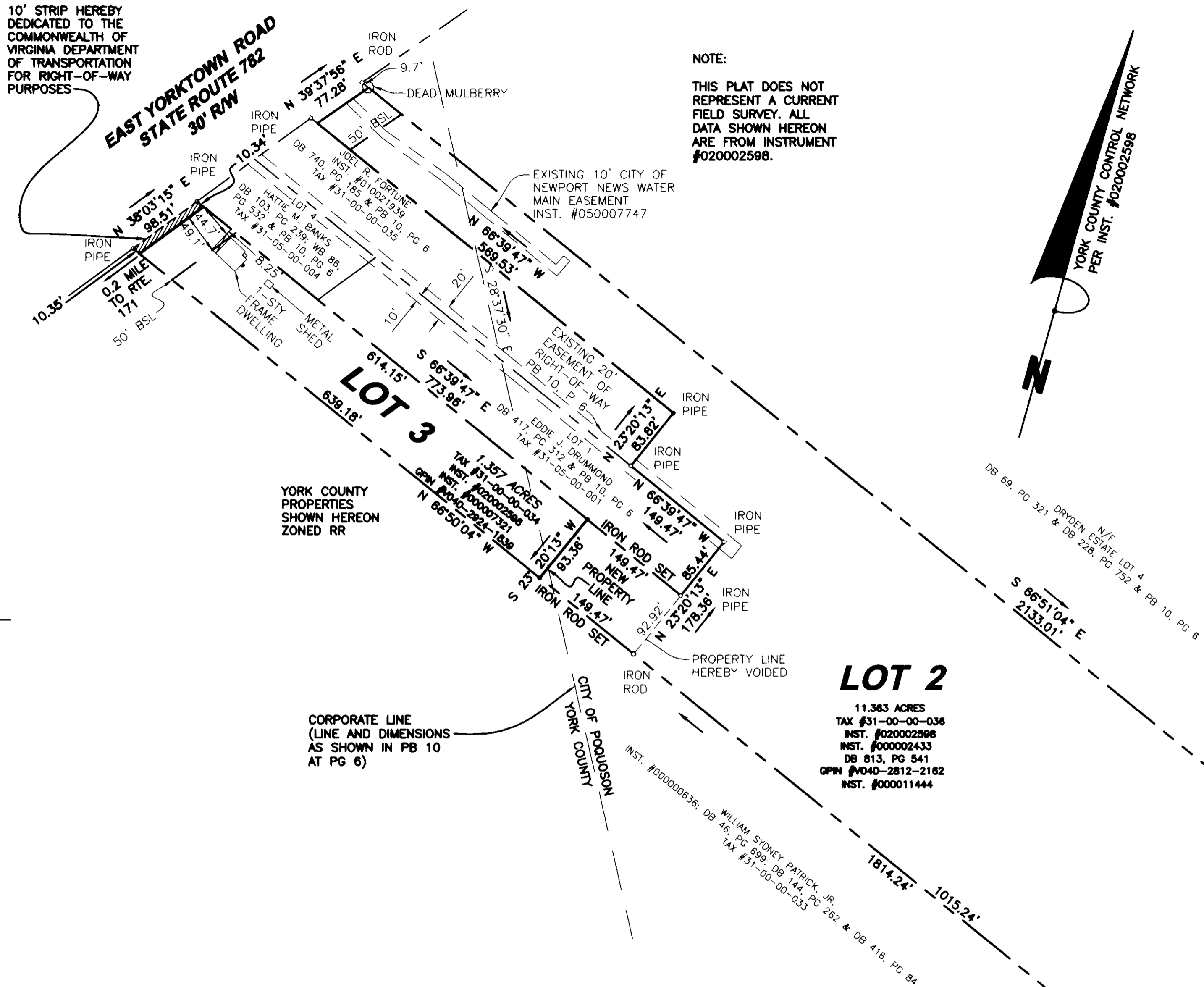
BY: Al Maddaloni
Plat Approving Agent

DATE: 11/14/05

STATE OF VIRGINIA
COUNTY OF YORK

In the Clerk's Office of the Circuit Court for the County of York-POQUOSON the 14th day of NOVEMBER 2005 this map was presented and admitted to record as 12:13pm the law directs in INSTRUMENT # 020002598

TESTE: Lynn S. Jenkins
Clerk
BY: Archie M. Churman, Jr.



YORK COUNTY PROPERTIES SHOWN HEREON ZONED RR

CORPORATE LINE (LINE AND DIMENSIONS AS SHOWN IN PB 10 AT PG 6)

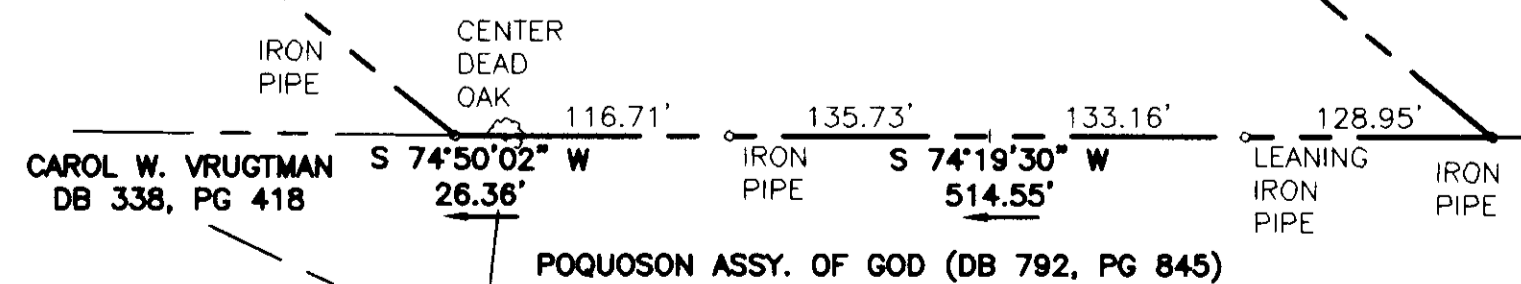
LOT 2

11.363 ACRES
TAX #31-00-00-036
INST. #020002598
INST. #000002433
DB 813, PG 541
GPN #V040-2812-2182
INST. #000011444

APPROVED AS TO PORTION IN POQUOSON:
CITY OF POQUOSON

BY: Cheryl D...
City Manager

DATE: 8/4/05



LEGEND

- Pipe/Rod Set
- Concrete Monument Set
- Pipe/Rod Found
- Concrete Monument Found
- RPA Resource Protection Area
- RMA Resource Management Area