

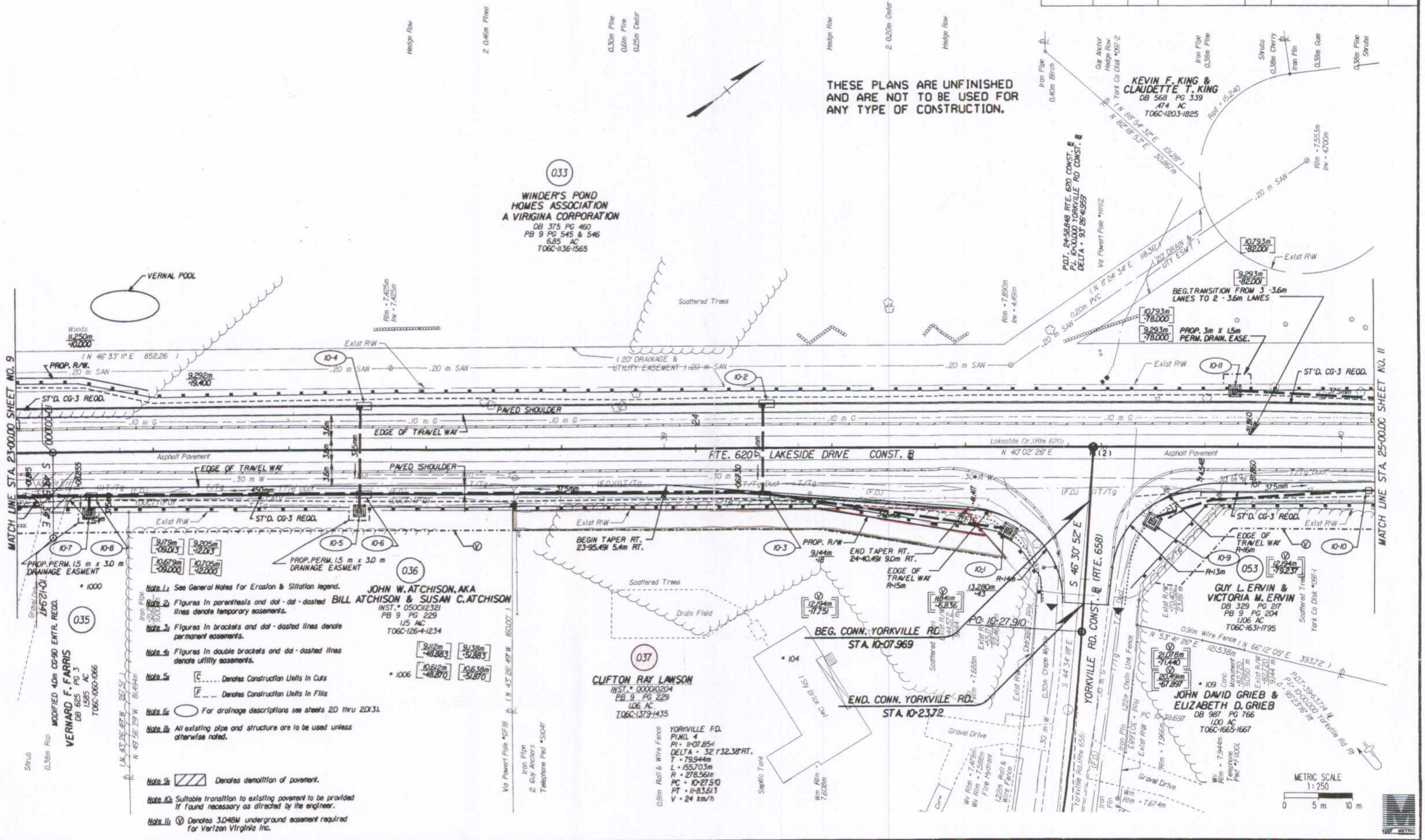
SUPERVISED BY: CHERYL STALLINGS (171) 862-2828
DESIGNED BY: LEE GILBERTSON (171) 862-1920
CADD OPERATOR: VICTORIA ERVIN (171) 862-1920

7/16/2005 13A

DESIGN FEATURES RELATING TO CONSTRUCTION OR TO REGULATION AND CONTROL OF TRAFFIC MAY BE SUBJECT TO CHANGE AS DEEMED NECESSARY BY THE DEPARTMENT

REVISION	FWA NUMBER	STATE	FEDERAL AID PROJECT	ROUTE	STATE PROJECT	SHEET NO.
	3	VA		620	0620-099-176.C-501	10

THESE PLANS ARE UNFINISHED AND ARE NOT TO BE USED FOR ANY TYPE OF CONSTRUCTION.



033
WINDER'S POND HOMES ASSOCIATION A VIRGINIA CORPORATION
 DB 375 PG 460
 PB 9 PG 545 & 546
 6.85 AC
 T06C-1136-1565

036
JOHN W. ATCHISON, AKA BILL ATCHISON & SUSAN C. ATCHISON
 INST. 050012321
 PB 9 PG 229
 115 AC
 T06C-126-4-1234

037
CLIFTON RAY LAWSON
 INST. 000010204
 PB 9 PG 229
 106 AC
 T06C-137-9-1435

KEVIN F. KING & CLAUDETTE T. KING
 DB 568 PG 339
 47.4 AC
 T06C-1203-1825

053
GUY L. ERVIN & VICTORIA M. ERVIN
 DB 329 PG 217
 PB 9 PG 204
 1106 AC
 T06C-1631-1795

059
JOHN DAVID GRIEB & ELIZABETH D. GRIEB
 DB 987 PG 766
 100 AC
 T06C-1665-1667

- Note 1: See General Notes for Erosion & Siltation Legend.
- Note 2: Figures in parenthesis and dot-dot-dashed lines denote temporary easements.
- Note 3: Figures in brackets and dot-dashed lines denote permanent easements.
- Note 4: Figures in double brackets and dot-dashed lines denote utility easements.
- Note 5: C Denotes Construction Units In Cuts
F Denotes Construction Units In Fills
- Note 6: For drainage descriptions see sheets 2D thru 2DX31.
- Note 8: All existing pipe and structure are to be used unless otherwise noted.
- Note 9: Denotes demolition of pavement.
- Note 10: Suitable transition to existing pavement to be provided if found necessary as directed by the engineer.
- Note 11: Denotes 3.048M underground easement required for Verizon Virginia Inc.

MATCH LINE STA. 23+00.00 SHEET NO. 9

MATCH LINE STA. 25+00.00 SHEET NO. 11

State Highway Plat Book No. 9 Page 178