


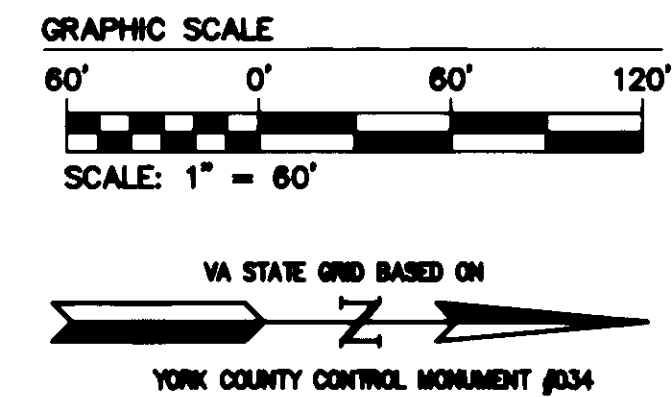
PLAT OF SUBDIVISION FELGATES WOODS

SCALE: 1"=60' JOB NO. 9341 MARCH 31, 2005
BRUTON DISTRICT YORK COUNTY VIRGINIA



5248 Olde Towne Road, Suite 1
Williamsburg, Virginia 23188
(757) 253-0040
Fax (757) 220-8994

SHEET 2 OF 4

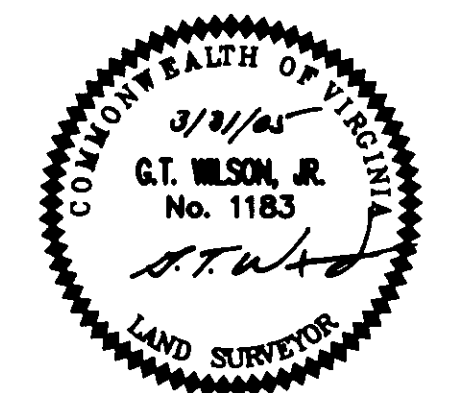
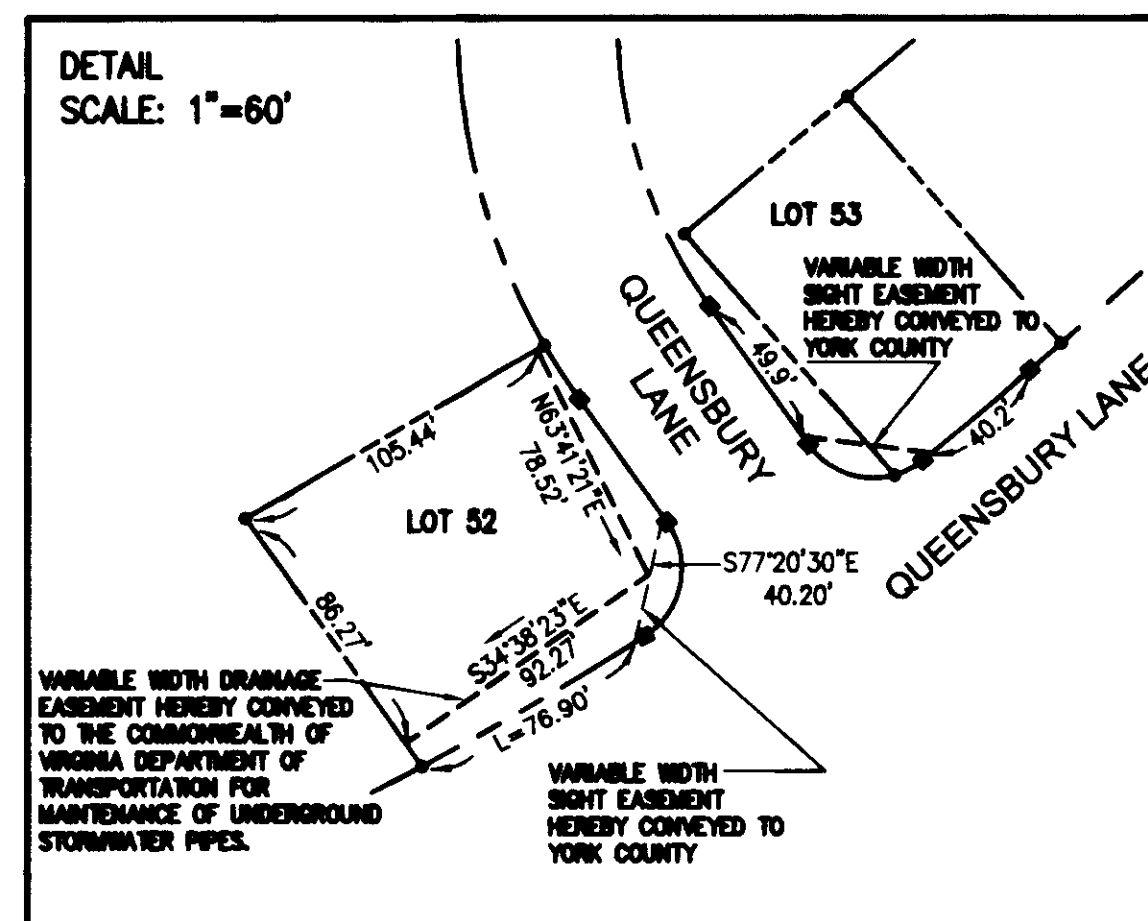


R/W CURVE TABLE						
CURVE	DELTA	RADIUS	ARC	TANGENT	CHORD	CHORD BEARING
C1	12°04'39"	969.00	204.26	102.51	203.88	N32°47'52"W
C2	5°48'34"	1031.00	104.54	52.31	104.49	N29°39'50"W
C3	8°38'06"	501.67	75.61	37.87	75.53	N36°53'10"W
C4	54°00'58"	280.00	263.97	142.72	254.30	N68°12'42"W
C5	14°20'04"	1175.00	293.97	147.75	293.20	N88°03'09"W
C6	180°00'00"	155.00	486.94	—	310.00	S09°06'53"W
C7	14°20'04"	1485.00	371.54	186.74	370.56	S88°03'09"E
C8	59°36'54"	230.00	239.31	131.76	228.66	S65°24'44"E
C9	90°00'00"	205.00	322.01	205.00	289.91	S80°36'17"E
C10	93°02'11"	25.00	40.59	26.36	36.28	S79°05'12"E
C11	5°48'34"	969.00	98.25	49.17	98.21	S29°39'50"E
C12	12°04'39"	1031.00	217.33	109.07	216.93	S32°47'52"E
C13	2°34'55"	975.00	43.93	21.97	43.93	S39°54'46"E
C14	93°01'01"	25.00	40.59	26.36	36.27	S07°53'12"W
C15	90°00'00"	155.00	243.47	155.00	219.20	N80°36'17"W
C16	59°36'54"	280.00	291.32	160.41	278.37	N65°24'44"W
C17	14°20'04"	1435.00	359.02	180.45	358.08	N88°03'09"W
C18	180°00'00"	105.00	329.86	—	210.00	N09°06'53"E
C19	14°20'04"	1225.00	306.47	154.04	305.68	S88°03'09"E
C20	54°00'58"	230.00	216.84	117.23	208.89	S68°12'42"E

- NOTES:
- UNLESS OTHERWISE NOTED, A 10' PRIVATE DRAINAGE EASEMENT CENTERED ON EACH LOT'S SIDE PROPERTY LINE IS HEREBY CONVEYED TO THE FELGATES WOODS HOMEOWNER'S ASSOCIATION.
 - ALL COMBINED DRAINAGE & UTILITY EASEMENTS HEREBY CONVEYED TO YORK COUNTY; HOWEVER, THE HOMEOWNER'S ASSOCIATION SHALL BE RESPONSIBLE FOR DRAINAGE STRUCTURES WITHIN THE EASEMENT.

LOT AND COMMON AREA CURVE TABLE						
CURVE	DELTA	RADIUS	ARC	TANGENT	CHORD	CHORD BEARING
CA1	4°07'39"	1031.00	74.27	37.15	74.26	N28°49'22"W
CA2	23°03'11"	280.00	112.66	57.10	111.90	N60°00'55"W
CA3	1°02'42"	969.00	17.67	8.83	17.67	N27°16'54"W
CA4	70°00'33"	25.00	30.55	17.51	28.68	S19°23'26"W
CA5	53°16'00"	155.00	144.10	77.73	138.97	S81°01'42"W
1A	1°40'58"	1031.00	30.27	15.14	30.27	N31°43'40"W
1B	3°48'38"	501.67	33.36	16.69	33.36	N34°28'27"W
2	4°49'27"	501.67	42.24	21.13	42.23	N38°47'30"W
10	7°17'07"	280.00	35.60	17.83	35.58	N44°50'46"W
48	16°14'01"	205.00	58.08	29.24	57.89	S63°09'45"E
49	16°14'01"	205.00	58.08	29.24	57.89	S38°47'30"E
50	16°14'01"	205.00	58.08	29.24	57.89	N84°22'14"E
51	16°14'01"	205.00	58.08	29.24	57.89	N68°08'13"E
52A	5°37'30"	205.00	20.13	10.07	20.12	N57°12'28"E
52B	4°45'53"	969.00	80.58	40.31	80.56	S30°11'11"E
53	23°00'27"	25.00	10.04	5.09	9.97	S27°07'03"E
91	9°44'00"	155.00	26.33	13.20	26.30	N40°28'17"W
92	27°00'01"	155.00	73.04	37.21	72.37	N58°50'17"W

THIS SHEET ADDRESSES LOTS 1-10, 48-58 AND 90-92



APPROVED:
YORK COUNTY BOARD OF SUPERVISORS
BY: Al Maddalena PLAT APPROVING AGENT
DATE: 1/31/06

STATE OF VIRGINIA
COUNTY OF YORK
IN THE CLERK'S OFFICE OF THE CIRCUIT COURT FOR THE COUNTY OF YORK-POQUOSON THE 6th DAY OF February, 2006.
THIS MAP PRESENTED AND ADMITTED TO RECORD AS THE LAW DIRECTS, INSTRUMENT NO. 060002871
TESTE: Lynn S. Jenkins CLERK
BY: Archie M. Chism, Jr., D.C.

S:\Jobs\9341\00-Felgates Woods\dwg\Plats\9341SUBPLAT2.dwg 11/1/2005 2:39:17 PM EST

2006 FEB - 5 11:22:13