

PLAT OF SUBDIVISION FELGATES WOODS

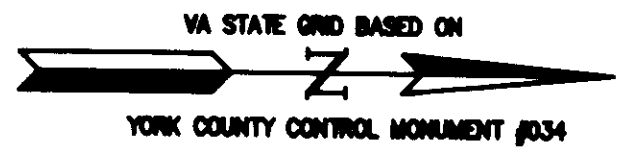
SCALE: 1"=60' JOB NO. 9341 MARCH 31, 2005
BRITTON DISTRICT YORK COUNTY VIRGINIA



5248 Olde Towne Road, Suite 1
Williamsburg, Virginia 23188
(757) 253-0040
Fax (757) 220-8994

SHEET 3 OF 4

NOTE: SEE SHEET 2 FOR R/W CURVE TABLE



NOTE: 5' UTILITY AND LANDSCAPE PRESERVATION EASEMENT HEREBY CONVEYED TO YORK COUNTY (TYPICAL)

LOT	DELTA	RADIUS	ARC	TANGENT	CHORD	CHORD BEARING
11	121°58'	280.00	60.11	30.17	59.99	N77°41'30"W
12	112°42'	280.00	55.60	27.89	55.51	N89°31'50"W
18	313°57'	1175.00	66.29	33.15	66.28	S86°23'47"W
19	332°14'	1175.00	72.54	36.28	72.53	S89°46'53"W
20	320°58'	1175.00	68.69	34.35	68.68	N86°46'31"W
21	314°17'	1175.00	66.41	33.21	66.40	N83°28'54"W
22	058°38'	1175.00	20.04	10.02	20.04	N81°22'26"W
33	121°01'	1485.00	34.99	17.50	34.99	S81°33'37"E
34	230°54'	1485.00	65.19	32.60	65.18	S83°29'35"E
35	230°54'	1485.00	65.19	32.60	65.18	S86°00'29"E
36	230°54'	1485.00	65.19	32.60	65.18	S88°31'23"E
37	230°54'	1485.00	65.19	32.60	65.18	N88°57'43"E
38	230°54'	1485.00	65.19	32.60	65.18	N86°26'49"E
39	024°33'	1485.00	10.60	5.30	10.60	N84°59'05"E
42	145°70'	230.00	60.01	30.18	59.84	S87°44'40"E
43	260°44'	230.00	104.69	53.27	103.79	S87°13'46"E
44	183°04'	230.00	74.60	37.83	74.28	S44°53'49"E
46	242°00'	205.00	9.66	4.83	9.66	S36°57'18"E
47	164°26'	205.00	56.90	30.16	56.68	S46°40'31"E
60	175°00'	230.00	71.99	36.29	71.70	S50°10'13"E
61	243°01'	230.00	98.41	49.97	97.66	S71°23'39"E
62	1134°07'	230.00	46.44	23.30	46.36	S89°26'08"E
67	175°13'	1225.00	26.81	13.40	26.80	N85°24'26"E
68	302°10'	1225.00	64.91	32.46	64.91	N87°33'07"E
69	302°10'	1225.00	64.91	32.46	64.91	S89°24'43"E
70	302°10'	1225.00	64.91	32.46	64.91	S86°22'33"E
71	302°10'	1225.00	64.91	32.46	64.91	S83°20'23"E
72	056°11'	1225.00	20.02	10.01	20.02	S81°21'12"E
75	039°31'	1435.00	16.49	8.24	16.49	N81°12'52"W
76	249°22'	1435.00	70.70	35.36	70.69	N82°57'18"W
77	249°22'	1435.00	70.70	35.36	70.69	N85°46'40"W
78	249°22'	1435.00	70.70	35.36	70.69	N88°36'02"W
79	249°22'	1435.00	70.70	35.36	70.69	S88°34'35"W
80	223°05'	1435.00	59.73	29.87	59.72	S85°58'22"W
84	1032°33'	280.00	51.52	25.83	51.45	N89°56'54"W
85	1138°43'	280.00	56.91	28.55	56.81	N78°51'16"W
86	1138°43'	280.00	56.91	28.55	56.81	N67°12'33"W
87	1149°50'	280.00	57.81	29.01	57.71	N55°28'16"W
88	1212°25'	280.00	59.65	29.84	59.54	N43°27'09"W
89	144°40'	280.00	8.52	4.26	8.52	N36°28'37"W

COLONIAL NATIONAL HISTORICAL PARKWAY
50' R/W
SEE BOOK 46 PAGE 58

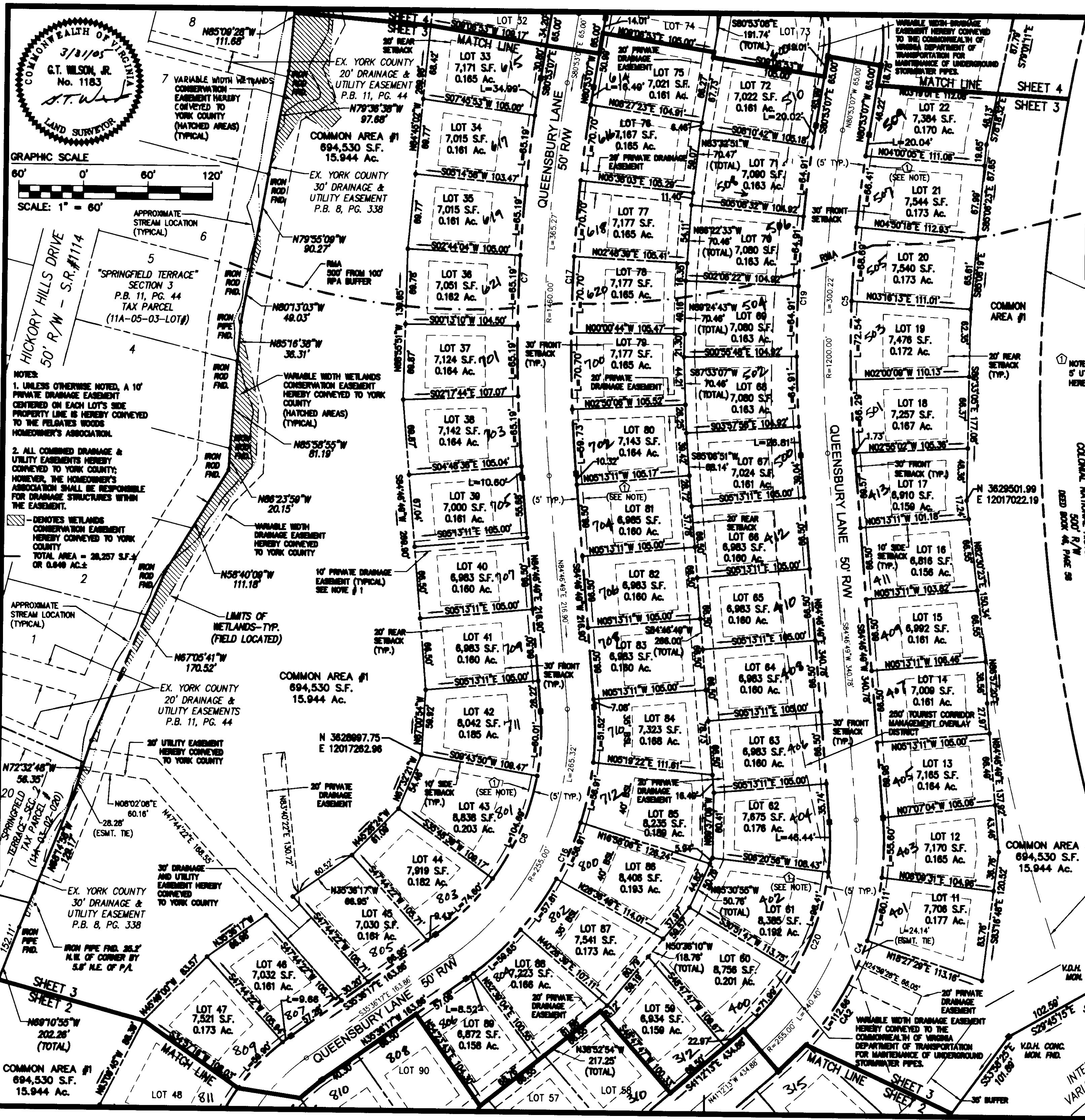
MIN. 300' SETBACK FROM COLONIAL NATIONAL HISTORICAL PARKWAY (SETBACK FROM SOUTHERLY EDGE OF CONCRETE ROAD)

APPROVED:
YORK COUNTY BOARD OF SUPERVISORS
BY: *W. Maddalena*
PLAT APPROVING AGENT
DATE: 1/8/10

STATE OF VIRGINIA
COUNTY OF YORK
IN THE CLERK'S OFFICE OF THE CIRCUIT COURT FOR THE COUNTY OF YORK-POLYGON the 14th DAY OF February 2006 12:12 PM

THIS MAP PRESENTED AND ADMITTED TO RECORD AS THE LAW DIRECTS.
INSTRUMENT NO. 06000287
TESTE: *Lynn S. Jenkins* CLERK
BY: *Michael M. Robinson, Jr.*

THIS SHEET ADDRESSES LOTS 11-22, 33-47, 60-72 AND 75-80



S:\Jobs\9341\00-Felgates Woods.dwg\Plats\9341SUBPLATP3.dwg 11/1/2005 11:42:36 AM EST

2006 FEB - 5 - 12:12 PM