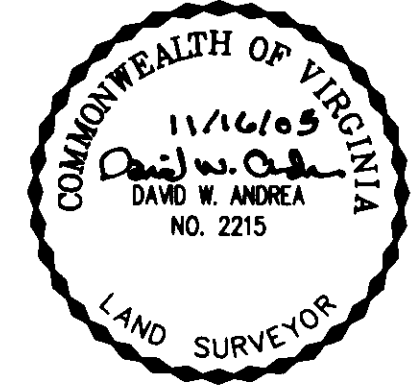


PLAT OF RESUBDIVISION  
THE VILLAGES OF KILN CREEK  
**CORPORATE CENTER 16C**  
**PARCELS 16C-1 AND 16C-2**  
BETHEL MAGISTERIAL DISTRICT  
COUNTY OF YORK, VIRGINIA

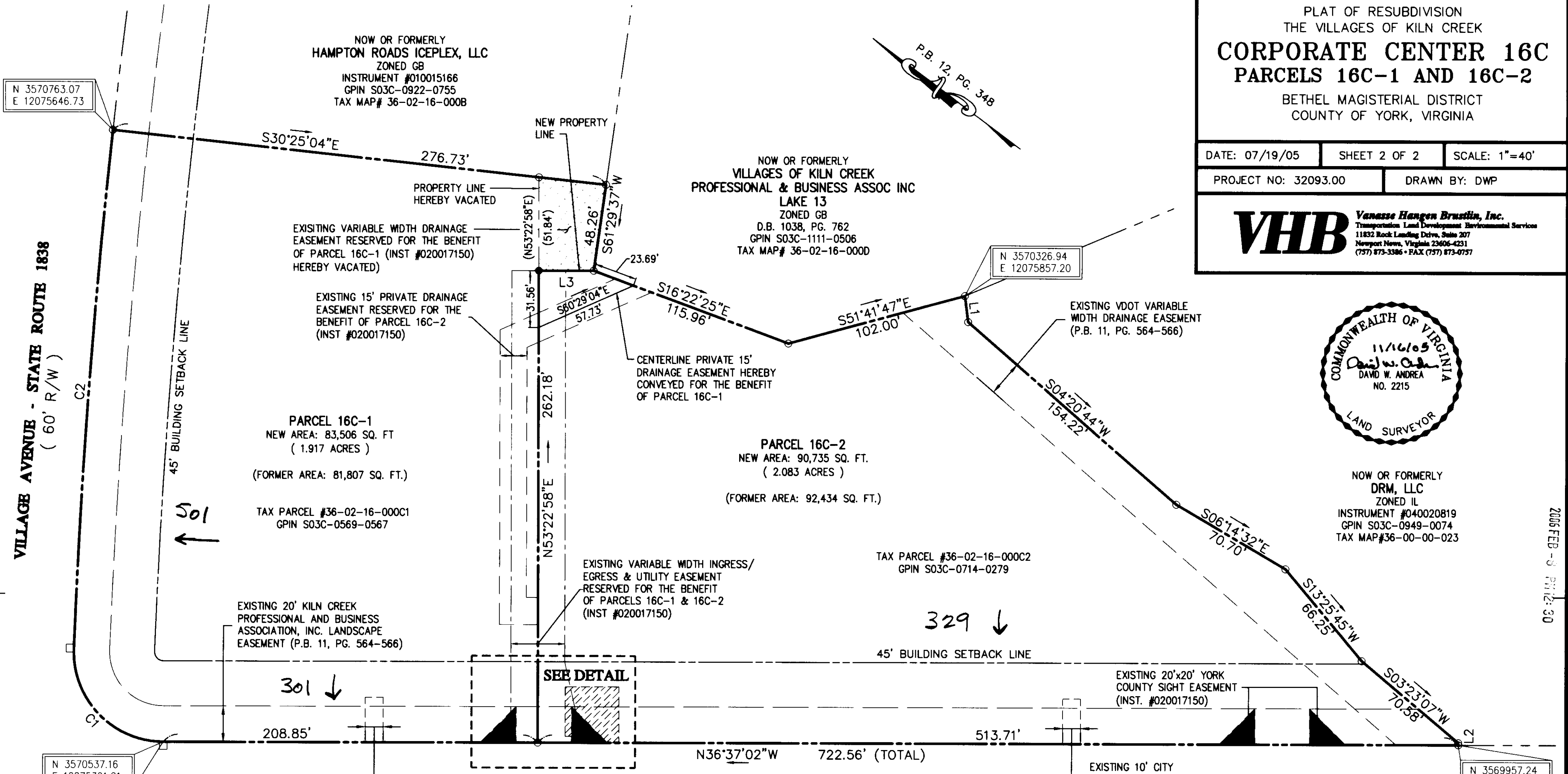
DATE: 07/19/05 SHEET 2 OF 2 SCALE: 1"=40'  
PROJECT NO: 32093.00 DRAWN BY: DWP

**VHB** Vanessa Hagen Brustlin, Inc.  
Transportation Land Development Environmental Services  
11832 Rock Landing Drive, Suite 207  
Newport News, Virginia 23606-4231  
(757) 873-3386 • FAX (757) 873-0757

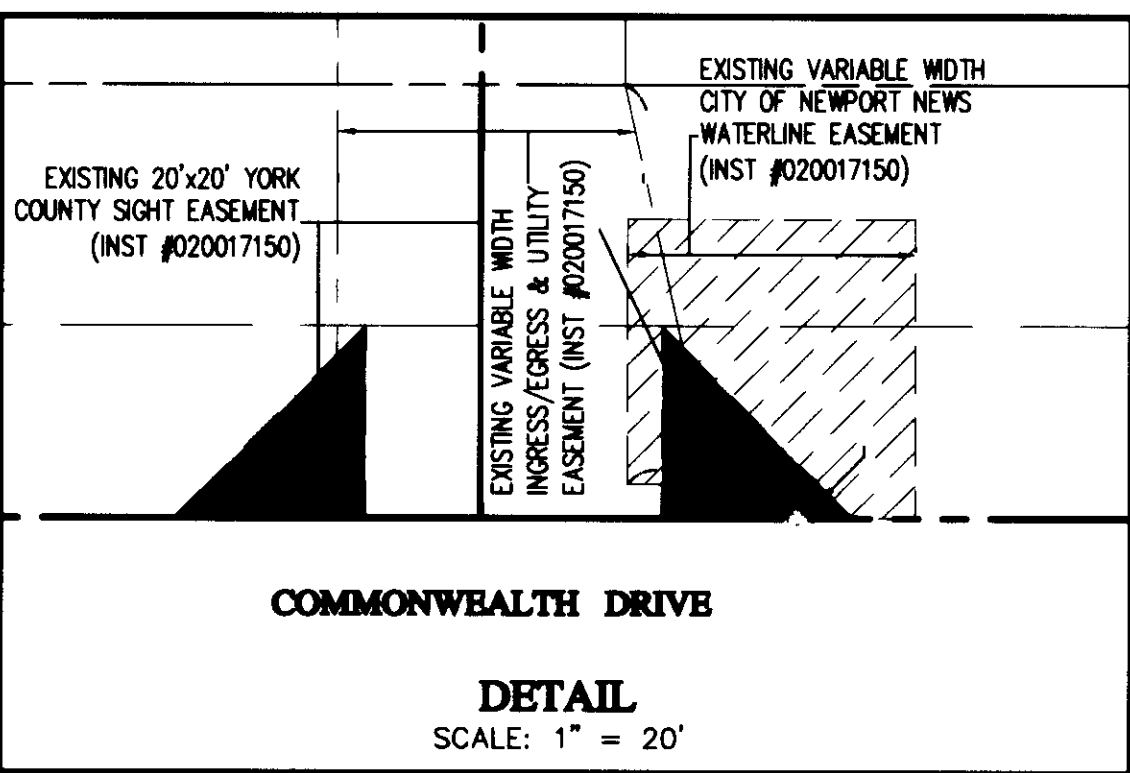
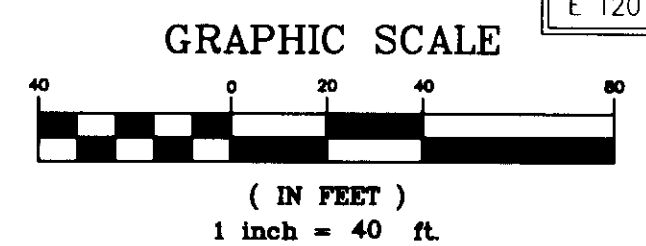


NOW OR FORMERLY  
DRM, LLC  
ZONED IL  
INSTRUMENT #040020819  
GPIN S03C-0949-0074  
TAX MAP #36-00-00-023

VILLAGE AVENUE - STATE ROUTE 1838  
( 60' R/W )



COMMONWEALTH DRIVE - STATE ROUTE 1839  
( 90' R/W )



LINE TABLE

LINE	BEARING	LENGTH
L1	S46°14'40"W	14.51'
L2	S53°22'58"W	1.19'
L3	S36°37'02"E	30.57'

**LEGEND**

- INDICATES IRON PIN FOUND
- INDICATES IRON PIN SET
- INDICATES CONC. MON. FOUND

CURVE DATA TABLE

NUMBER	RADIUS	DELTA	ARC LENGTH	TANGENT	CHORD	CHORD BEARING
C1	50.00'	92°10'23"	80.44'	51.93'	72.04'	N09°28'10"E
C2	4,109.26'	4°01'35"	288.77'	144.45'	288.72'	N57°34'09"E

APPROVED:  
YORK COUNTY BOARD OF SUPERVISORS  
BY: Al Maddalena  
PLAT APPROVING AGENT  
DATE: 2/3/06

STATE OF VIRGINIA  
COUNTY OF YORK  
IN THE CLERK'S OFFICE OF THE CIRCUIT COURT FOR THE COUNTY OF YORK-POQUOSON, THE 8<sup>TH</sup> DAY OF FEB, 2006, THIS MAP WAS PRESENTED AND ADMITTED TO RECORD AS THE LAW DIRECTS AS INSTRUMENT NO. 060003158.  
TESTE: LYNN S. JENKINS, CLERK 1:00 pm  
CLERK  
BY: Rachel Riebeck