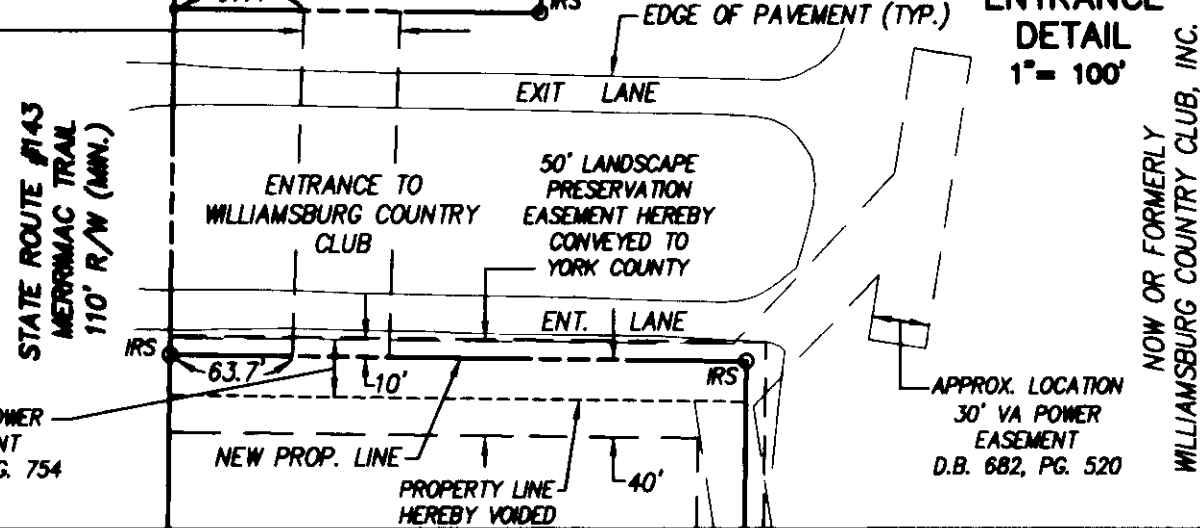
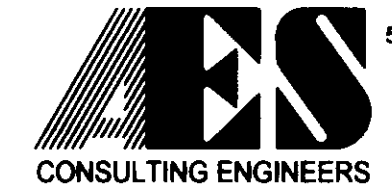


50' WIDE PEDESTRIAN CROSSING EASEMENT HEREBY CONVEYED TO LANDMARK RESORT PROPERTIES OF VA, LLC AND A 50' UTILITIES EASEMENT HEREBY CONVEYED TO YORK COUNTY 8,956 S.F.± OR 0.21 AC.±



PLAT SHOWING BOUNDARY LINE ADJUSTMENT BETWEEN THE PROPERTIES OF LANDMARK RESORT PROPERTIES OF VA, LLC AND WILLIAMSBURG COUNTRY CLUB, INC

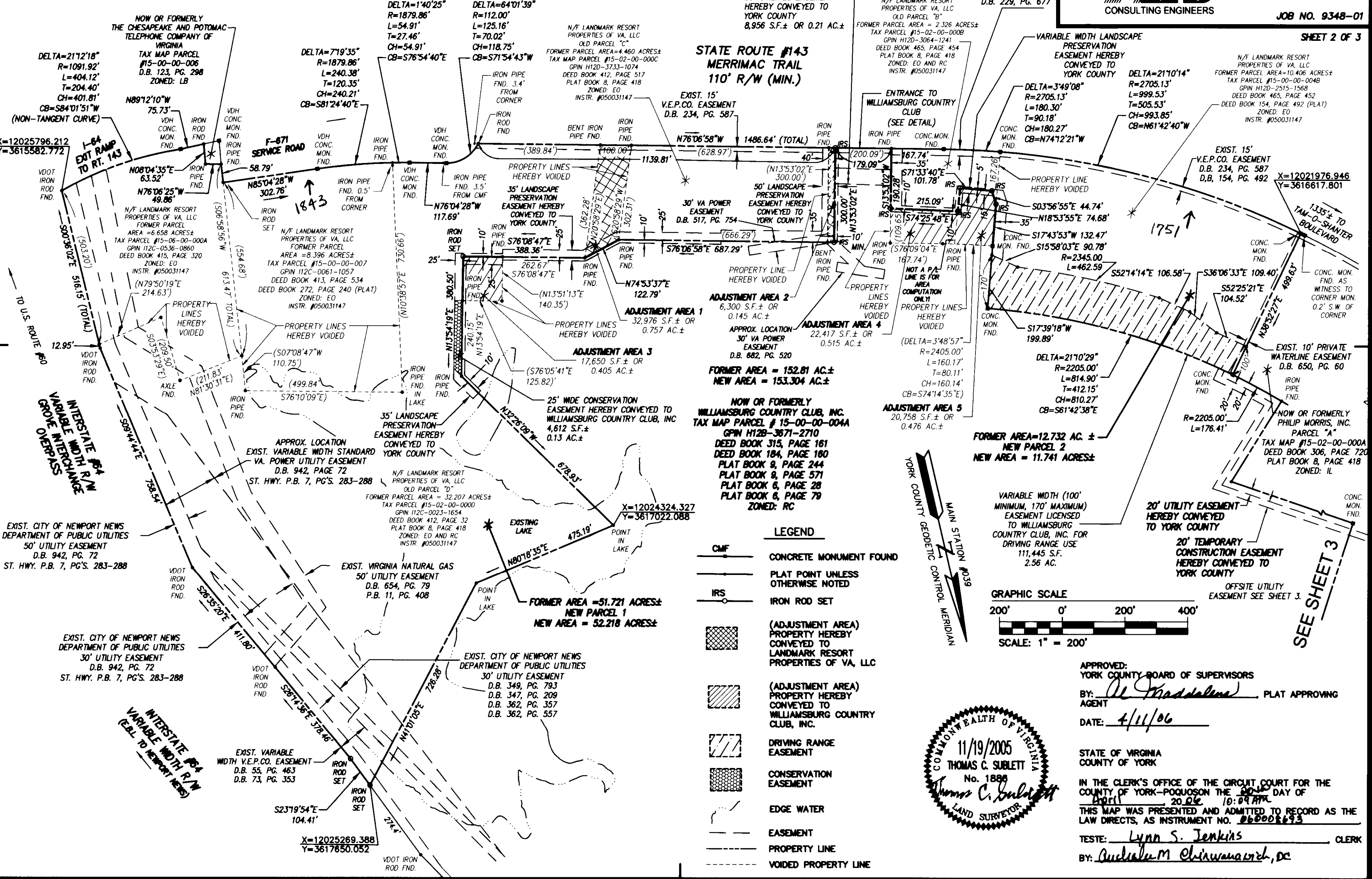
BRUTON MAGISTERIAL DISTRICT YORK COUNTY VIRGINIA
 DATE: 11/19/05 SCALE: 1" = 200' DRAWN: EAW



5248 Olde Towne Road, Suite 1
 Williamsburg, Virginia 23188
 (757) 253-0040
 Fax (757) 220-8994

JOB NO. 9348-01

SHEET 2 OF 3



STATE ROUTE #143 MERRIMAC TRAIL 110' R/W (MIN.)

ADJUSTMENT AREA 1
 32,976 S.F.± OR 0.757 AC.±

ADJUSTMENT AREA 2
 6,300 S.F.± OR 0.145 AC.±

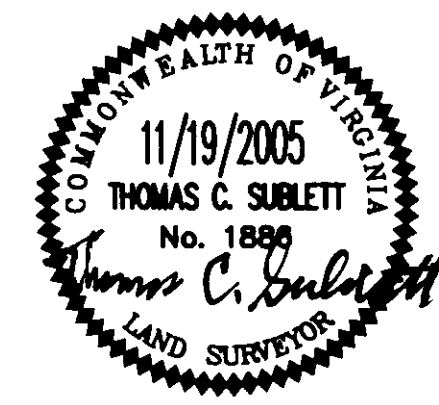
ADJUSTMENT AREA 3
 17,650 S.F.± OR 0.405 AC.±

ADJUSTMENT AREA 4
 22,417 S.F.± OR 0.515 AC.±

ADJUSTMENT AREA 5
 20,758 S.F.± OR 0.476 AC.±

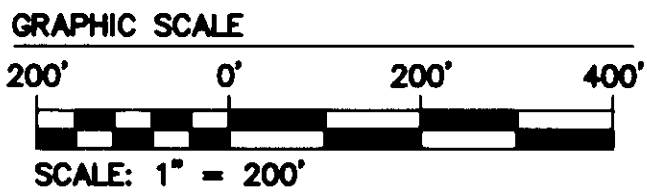
NOW OR FORMERLY WILLIAMSBURG COUNTRY CLUB, INC.
 TAX MAP PARCEL # 15-00-00-004A
 GPIN H128-3671-2710
 DEED BOOK 315, PAGE 161
 DEED BOOK 184, PAGE 160
 PLAT BOOK 8, PAGE 244
 PLAT BOOK 6, PAGE 571
 PLAT BOOK 6, PAGE 28
 PLAT BOOK 6, PAGE 79
 ZONED: RC

- LEGEND**
- CMF CONCRETE MONUMENT FOUND
 - PLAT POINT UNLESS OTHERWISE NOTED
 - IRS IRON ROD SET
 - (ADJUSTMENT AREA) PROPERTY HEREBY CONVEYED TO LANDMARK RESORT PROPERTIES OF VA, LLC
 - (ADJUSTMENT AREA) PROPERTY HEREBY CONVEYED TO WILLIAMSBURG COUNTRY CLUB, INC.
 - DRIVING RANGE EASEMENT
 - CONSERVATION EASEMENT
 - EDGE WATER
 - EASEMENT
 - PROPERTY LINE
 - VOIDED PROPERTY LINE



APPROVED:
 YORK COUNTY BOARD OF SUPERVISORS
 BY: *Al Maddalena* PLAT APPROVING AGENT
 DATE: 4/11/06

STATE OF VIRGINIA COUNTY OF YORK
 IN THE CLERK'S OFFICE OF THE CIRCUIT COURT FOR THE COUNTY OF YORK-POQUOSON THE 20th DAY OF April 2006 10:09 AM
 THIS MAP WAS PRESENTED AND ADMITTED TO RECORD AS THE LAW DIRECTS, AS INSTRUMENT NO. 26008693
 TESTE: *Lynn S. Jenkins* CLERK
 BY: *Andriana M. Chirvanovich, DC*



SEE SHEET 3