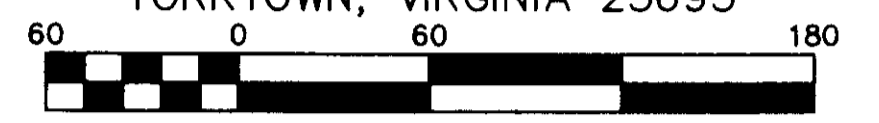
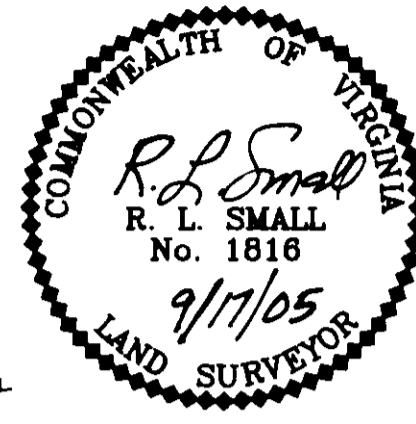


2005 APR 20 12:02

SUBDIVISION PLAT OF
VICTORY ESTATES

BETHEL MAGISTERIAL DISTRICT
COUNTY OF YORK, VIRGINIA
SCALE: 1" = 60' DATE: 17 SEPTEMBER 2005

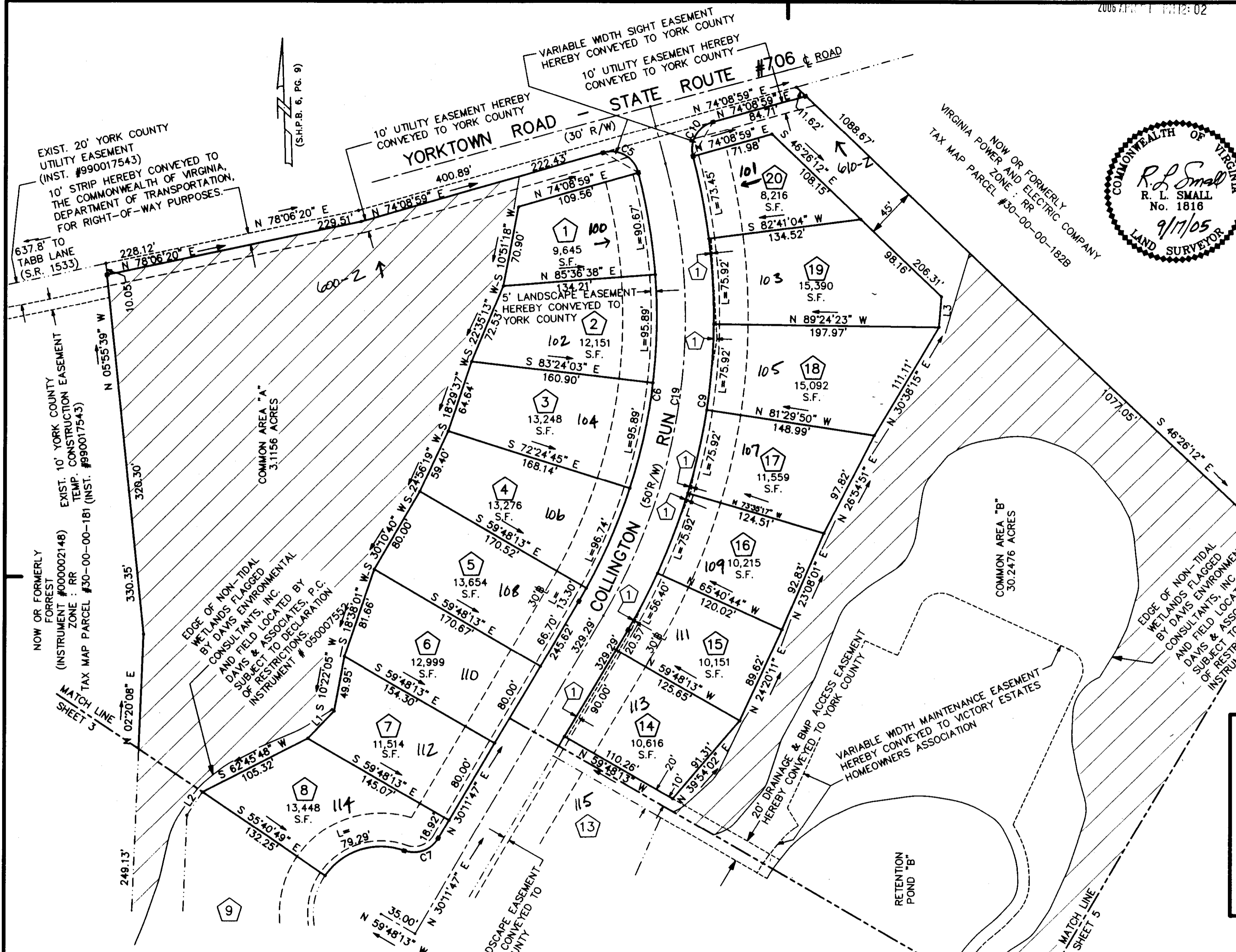
DAVIS & ASSOCIATES, P.C.
SURVEYORS - PLANNERS
3630 GEORGE WASHINGTON
MEMORIAL HIGHWAY - SUITE "G"
YORKTOWN, VIRGINIA 23693



Scale 1" = 60 ft
SHEET 4 OF 5

- SYMBOLS -

- DENOTES MINIMUM BUILDING SETBACK LINE
- DENOTES IRON PIPE FOUND
- DENOTES IRON PIPES TO BE SET AT ALL PROPERTY LINE JUNCTURES
- DENOTES CONCRETE MONUMENT FOUND
- DENOTES CONCRETE MONUMENT TO BE SET



① - VARIABLE WIDTH DRAINAGE EASEMENT (CENTERED 10' OVER STORM SEWER) HEREBY DEDICATED TO THE COMMONWEALTH OF VIRGINIA, DEPARTMENT OF TRANSPORTATION, FOR THE MAINTENANCE OF UNDERGROUND STORMWATER PIPES.

DENOTES VARIABLE WIDTH WETLANDS CONSERVATION EASEMENT HEREBY CONVEYED TO YORK COUNTY

APPROVED
YORK COUNTY BOARD OF SUPERVISORS

BY: *Al Madalena*
PLAT APPROVING AGENT

DATE: 4/4/06

STATE OF VIRGINIA
COUNTY OF YORK
IN THE CLERK'S OFFICE OF THE CIRCUIT COURT FOR THE COUNTY OF YORK-POQUOSON
THE 21st DAY OF April 2006. THIS MAP WAS PRESENTED AND ADMITTED TO RECORD AS THE LAW DIRECTS AS INSTRUMENT # 00008850
LYNN S. JENNINO, CLERK 12:00 pm
TESTE: _____
CLERK
BY: *Rachel Riebeck*