

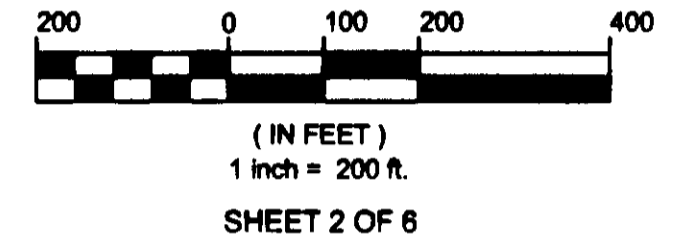
BOUNDARY SURVEY AND PROPERTY LINE VACATION  
 BEING PROPERTY OF  
 BP PRODUCTS NORTH AMERICA INC

YORK COUNTY, VIRGINIA

GRAFTON DISTRICT

DATE: 5/01/06

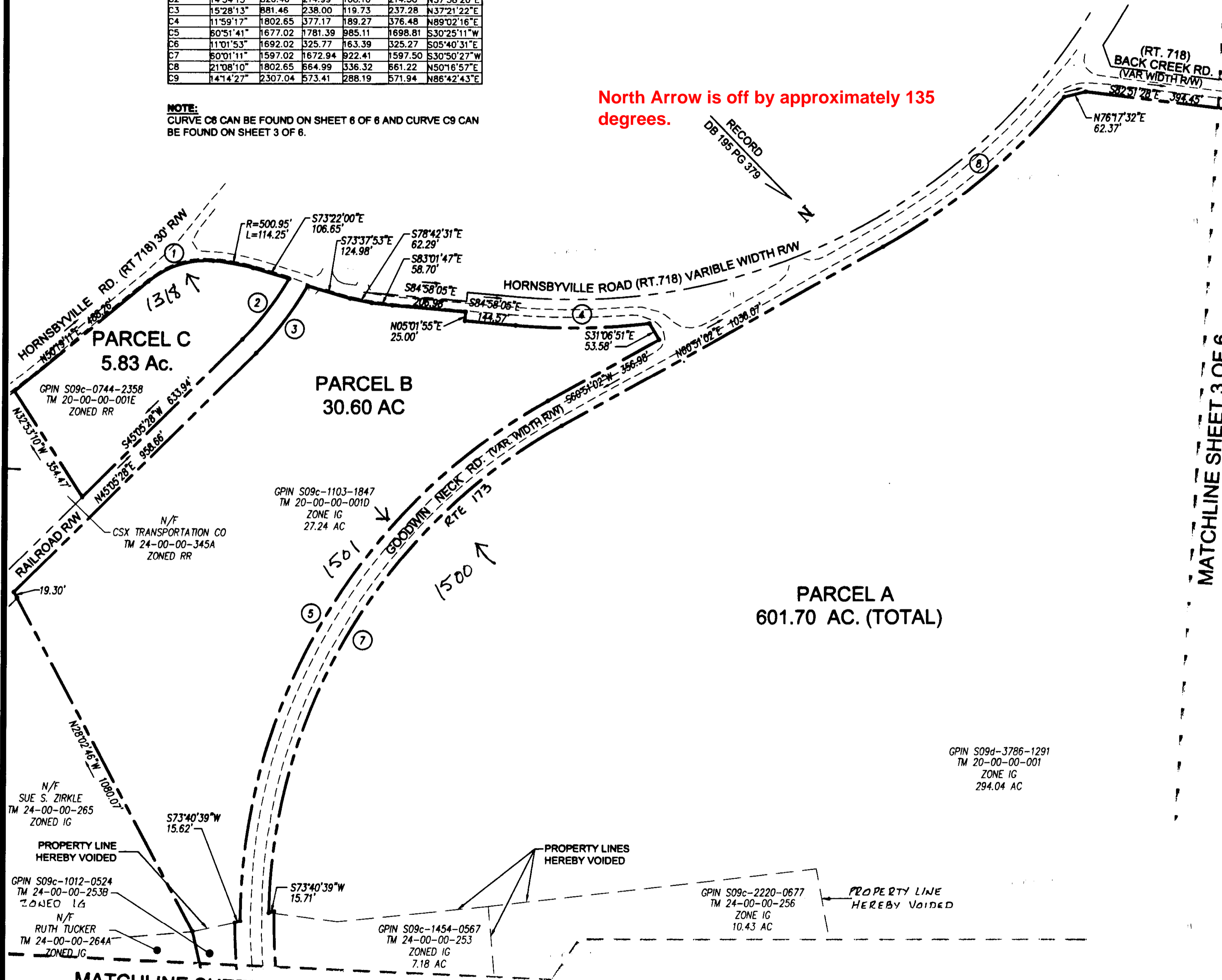
**Bury+Partners**  
 ENGINEERING SOLUTIONS  
 4095 Ironbound Road, Suite 200  
 Williamsburg, Virginia 23188  
 Tel. (757) 229-1776 Fax (757) 229-4663  
 Bury+Partners, Inc. ©Copyright 2006



CURVE TABLE						
CURVE	DELTA	RADIUS	LENGTH	TANGENT	CHORD	CHORD BEARING
C1	43°48'18"	256.41	196.04	103.09	191.30	S72°13'21"W
C2	14°54'15"	826.46	214.99	108.10	214.38	N37°38'20"E
C3	15°28'13"	881.46	238.00	119.73	237.28	N37°21'22"E
C4	11°59'17"	1802.65	377.17	189.27	376.48	N89°02'16"E
C5	60°51'41"	1677.02	1781.39	985.11	1698.81	S30°25'11"W
C6	11°01'53"	1692.02	325.77	163.39	325.27	S05°40'31"E
C7	60°01'11"	1597.02	1672.94	922.41	1597.50	S30°50'27"W
C8	21°08'10"	1802.65	664.99	336.32	661.22	N50°16'57"E
C9	14°14'27"	2307.04	573.41	288.19	571.94	N86°42'43"E

**NOTE:**  
 CURVE C8 CAN BE FOUND ON SHEET 6 OF 6 AND CURVE C9 CAN BE FOUND ON SHEET 3 OF 6.

North Arrow is off by approximately 135 degrees.



MATCHLINE SHEET 3 OF 6



APPROVED:  
 YORK COUNTY BOARD OF SUPERVISORS  
 BY: Al. Maddalena  
 PLAT APPROVING AGENT  
 DATE: 5/11/06

STATE OF VIRGINIA  
 COUNTY OF YORK  
 IN THE CLERK'S OFFICE OF THE CIRCUIT COURT FOR THE COUNTY OF YORK-POQUOSON, THIS 11<sup>th</sup> DAY OF May 2006 THIS MAP WAS PRESENTED AND ADMITTED TO RECORD AS THE LAW DIRECTS AS INSTRUMENT NO. 060011025 3:04 p.m.  
 TESTE: Lynn S. Jenkins  
 CLERK  
 BY: Valerie Lynn Ballard D.C.

MATCHLINE SHEET 6 OF 6

2006 MAY 11 PM 3:05