

SURVEYED BY - BUB HARMON (751)251-5031
 SUPERVISED BY - P.H. BYRUM (752)925-2557
 DESIGNED BY - M.D. WINSTEAD (752)925-2556
 HAMPTON ROADS DISTRICT DESIGN UNIT

REFERENCES
 (PROFILES, DETAIL & DRAINAGE DESCRIPTION SHEETS, ETC.)

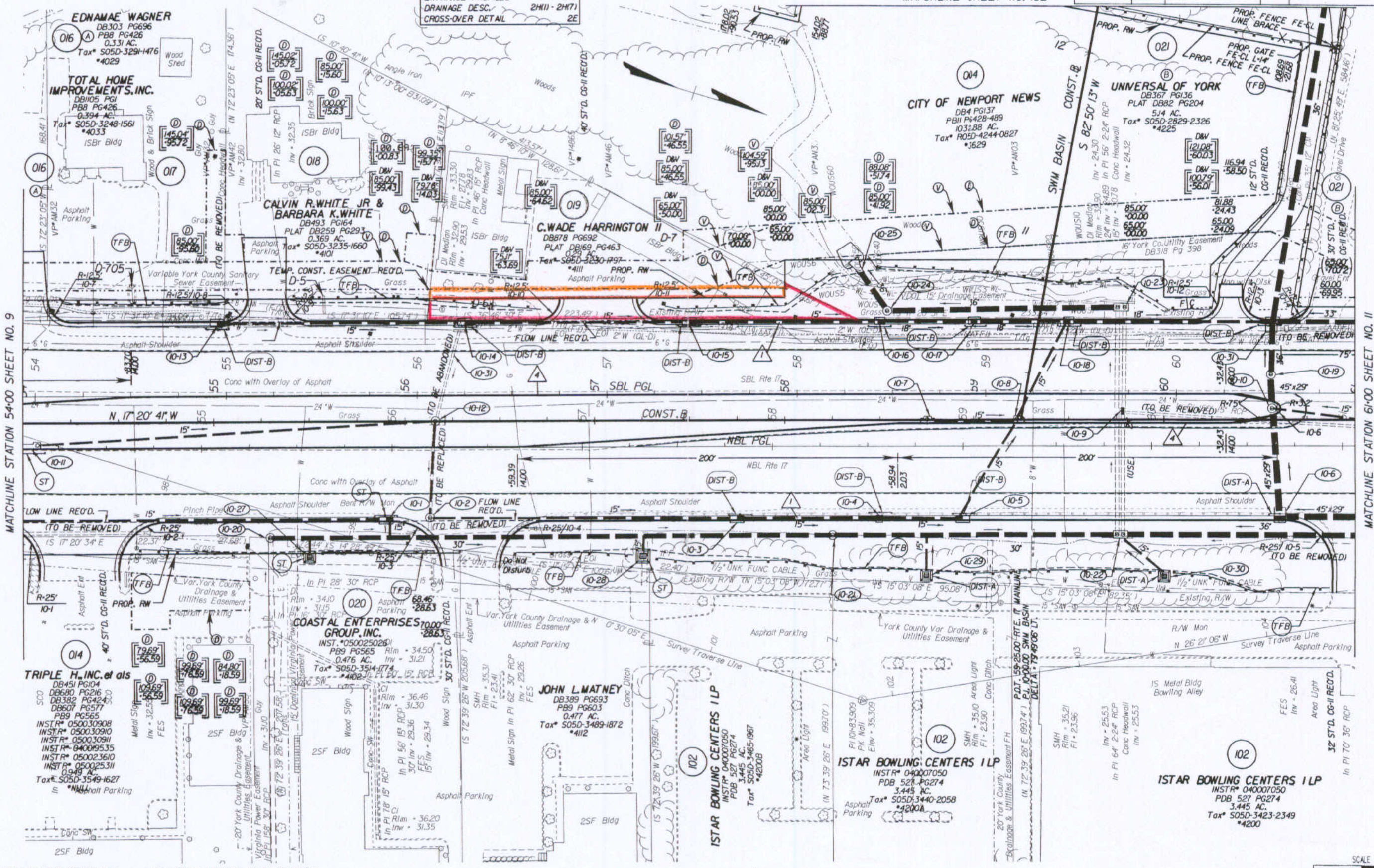
MAINLINE PROFILES	10A
ENTRANCE PROFILES	24C
DRAINAGE DESC.	2H(1) - 2H(7)
CROSS-OVER DETAIL	2E

DESIGN FEATURES RELATING TO CONSTRUCTION OR TO REGULATION AND CONTROL OF TRAFFIC MAY BE SUBJECT TO CHANGE AS DEEMED NECESSARY BY THE DEPARTMENT

REVISED	12/09/05 02/06/06 03/23/06	STATE	FEDERAL AID PROJECT	ROUTE	STATE PROJECT	SHEET NO.
		VA.		17	6017-099-129, RW-201, C-501	10

MATCHLINE SHEET NO. 10B

THESE PLANS ARE UNFINISHED FOR AND ARE NOT TO BE USED FOR ANY TYPE OF CONSTRUCTION.



MATCHLINE STATION 54+00 SHEET NO. 9

MATCHLINE STATION 61+00 SHEET NO. 11

State Highway 270
 Plat Book No. 060026620
 INSTR # 060026620

NOTE: PGL DENOTES PROFILE GRADE LINE
 NOTE: SEE GENERAL NOTES FOR E&S LEGEND
 ○ DENOTES DRAINAGE STRUCTURE NUMBER

Note: Figures in brackets and dot-dashed lines denote Permanent Easements.
 V Denotes variable easement required for Verizon Virginia
 D Denotes variable easement required for Dominion Virginia Power

Note: Figures in parenthesis and dot-dashed lines denote Temporary Easements.

--- Denotes Construction Limits In Cuts
 --- Denotes Construction Limits In Fills
 ▲ ST'D. CG-7 REQ'D.
 ▲ ST'D. MS-2 REQ'D.

SCALE 0 25' 50'

PLAN NO.	PROJECT	FILE NO.	SHEET NO.
	6017-099-129		10

B/14/2006 15.324