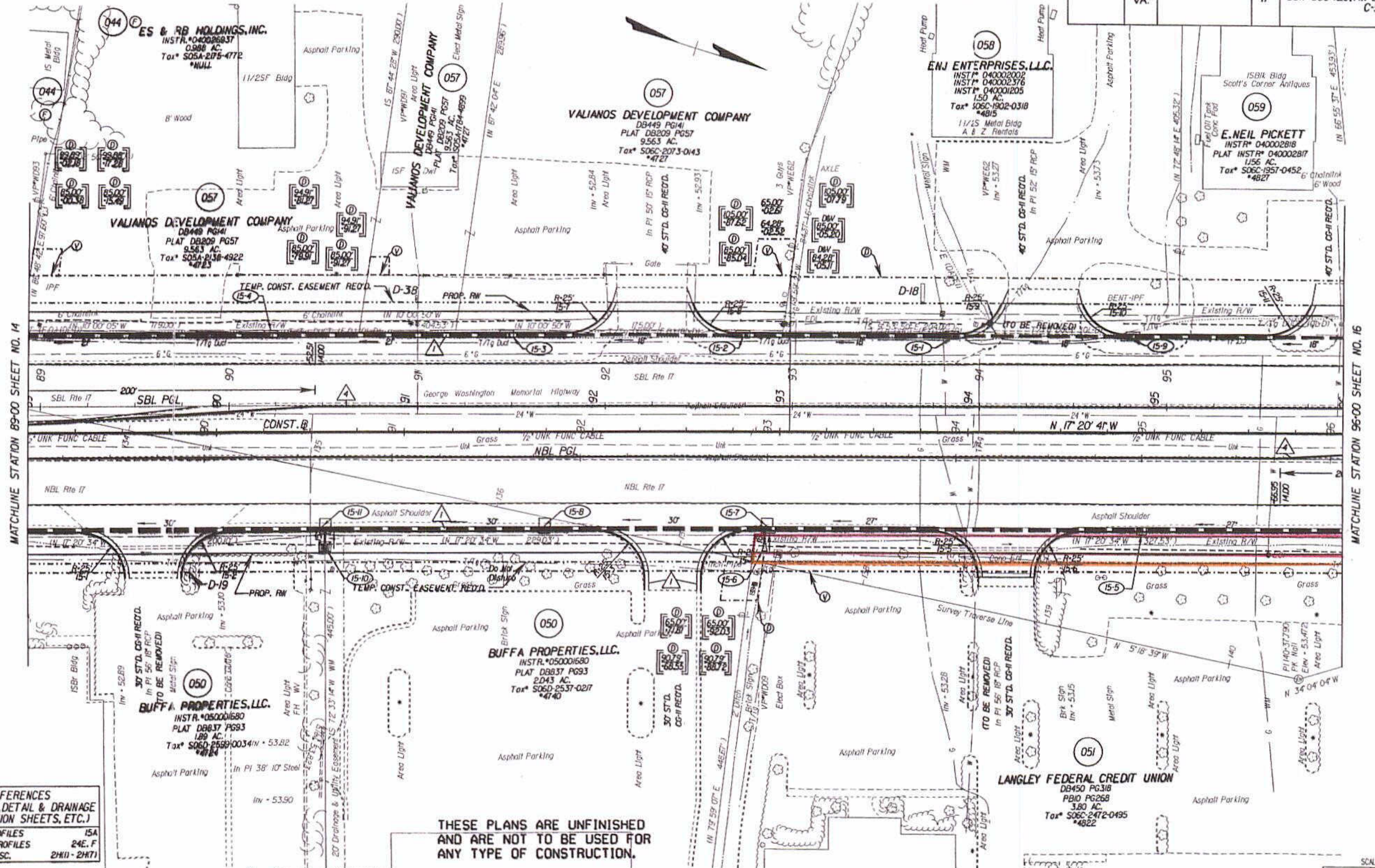


SURVEYED BY - J.B. HAMMOND 07/25/57
SUPERVISED BY - D.H. BYNUM 07/25/57
DESIGNED BY - M.D. WINSTEAD 07/25/57
HAMPTON ROADS DISTRICT DESIGN UNIT

DESIGN FEATURES RELATING TO CONSTRUCTION OR TO REGULATION AND CONTROL OF TRAFFIC MAY BE SUBJECT TO CHANGE AS DEEMED NECESSARY BY THE DEPARTMENT

REVISED 12/09/05 02/06/06	STATE VA.	FEDERAL AID PROJECT	ROUTE 17	STATE PROJECT	6017-099-129, RW-201, C-501	SHEET NO. 15
---------------------------------	--------------	------------------------	-------------	------------------	--------------------------------	-----------------



REFERENCES
(PROFILES, DETAIL & DRAINAGE DESCRIPTION SHEETS, ETC.)

MAINLINE PROFILES	15A
ENTRANCE PROFILES	24E, F
DRAINAGE DESC.	2(H1) - 2(H7)

NOTE: PGL DENOTES PROFILE GRADE LINE
NOTE: SEE GENERAL NOTES FOR E&S LEGEND
○ DENOTES DRAINAGE STRUCTURE NUMBER

Note: Figures in brackets and dot - dashed lines denote Permanent Easements.
Ⓢ Denotes variable easement required for Verizon Virginia
Ⓣ Denotes variable easement required for Dominion Virginia Power

THESE PLANS ARE UNFINISHED AND ARE NOT TO BE USED FOR ANY TYPE OF CONSTRUCTION.

Note: Figures in parenthesis and dot - dot - dashed lines denote Temporary Easements.

Ⓢ Denotes Construction Limits In Cuts
Ⓣ Denotes Construction Limits In Fills

△ ST'D. CG-7 RECD.
△ ST'D. MS-2 RECD.



PLAN NO.	PROJECT	FILE NO.	SHEET NO.
	6017-099-129		15