

SURVEYED BY: BOB BURTON 1750 251-937  
SUPERVISED BY: PAUL BURTON 1750 1925-2557  
DESIGNED BY: W.D. WINSTON 1750 1925-2556  
HAMPTON ROADS DISTRICT DESIGN UNIT

Instr# 070001456  
State Highway  
Plat Book No. 9 Page 3/3

DESIGN FEATURES RELATING TO CONSTRUCTION OR TO REGULATION AND CONTROL OF TRAFFIC MAY BE SUBJECT TO CHANGE AS DEEMED NECESSARY BY THE DEPARTMENT

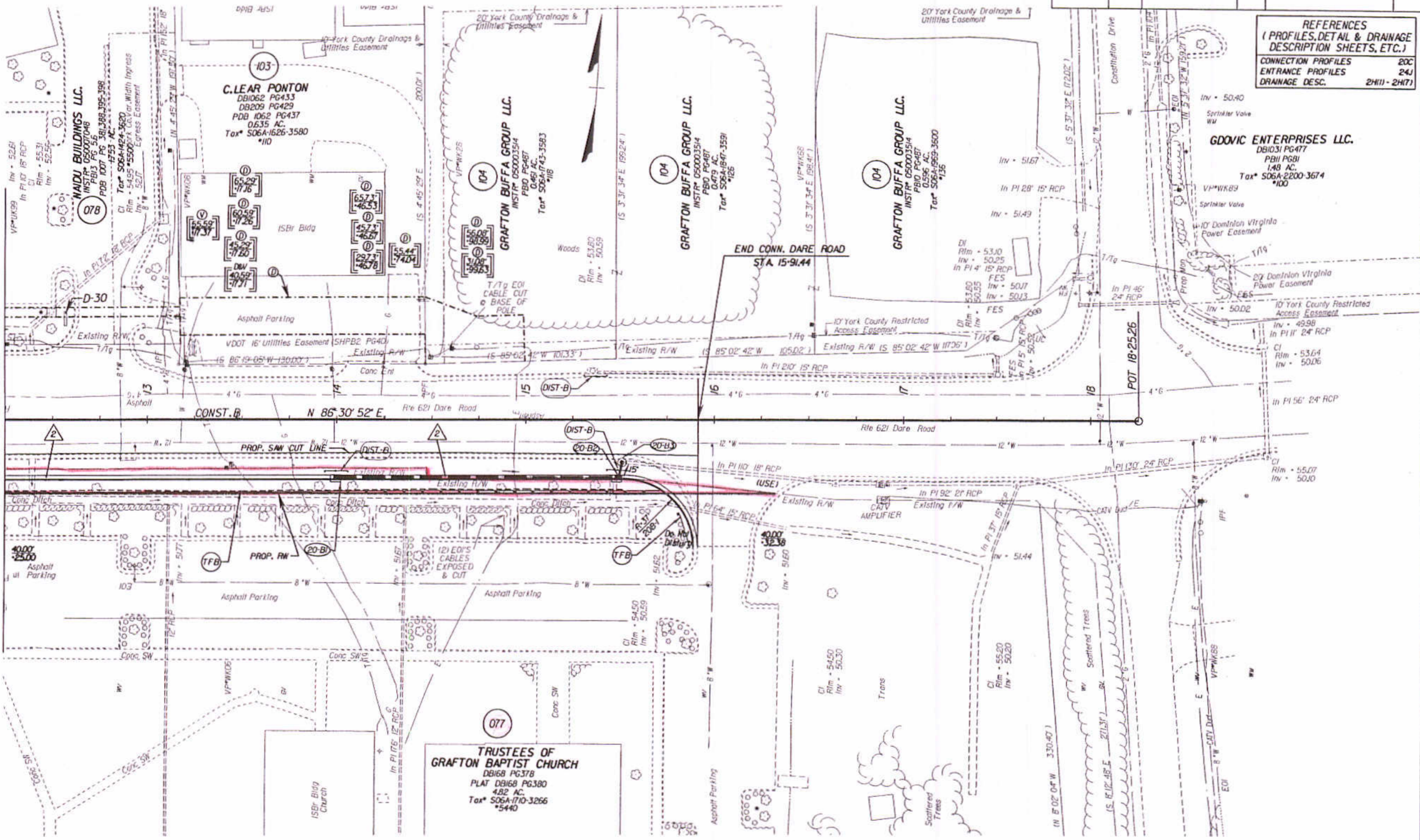
REVISED	STATE	FEDERAL AID PROJECT	ROUTE	STATE PROJECT	SHEET NO.
03/23/06	VA.		17	6017-099-129, RW-201, C-501	20B

REFERENCES  
(PROFILES, DETAIL & DRAINAGE DESCRIPTION SHEETS, ETC.)

CONNECTION PROFILES 20C  
ENTRANCE PROFILES 24J  
DRAINAGE DESC. 2H(1) - 2H(7)

THESE PLANS ARE UNFINISHED AND ARE NOT TO BE USED FOR ANY TYPE OF CONSTRUCTION.

MATCHLINE STATION 12+25 SHEET NO. 20



Note: Figures in brackets and dot-dashed lines denote Permanent Easements.

(V) Denotes variable easement required for Verizon Virginia

(D) Denotes variable easement required for Dominion Virginia Power

(C) Denotes Construction Limits In Cuts

(F) Denotes Construction Limits In Fills

ST'D. CG-6 RE'OD.

NOTE: SEE GENERAL NOTES FOR E&S LEGEND

(O) DENOTES DRAINAGE STRUCTURE NUMBER



PLAN NO.	PROJECT	FILE NO.	SHEET NO.
	6017-099-129		20B