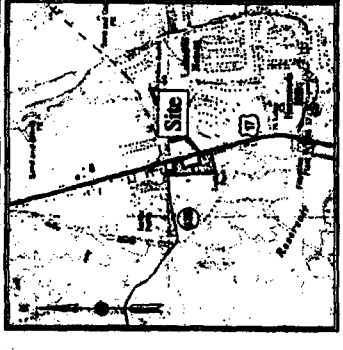
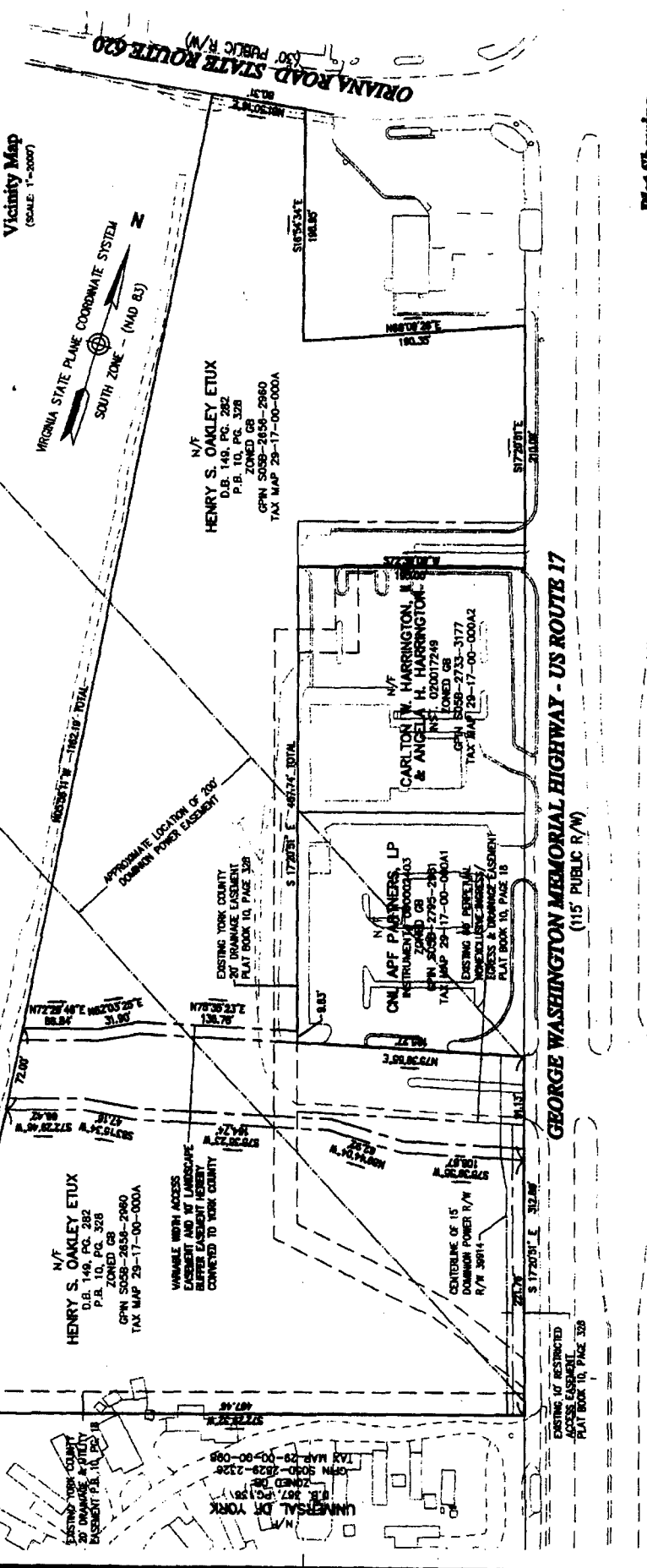


YORK COUNTY
 APPROVED AS TO CONFORMANCE WITH
 EXISTING GIS DATA
 BY: MICHELLE M. WILSON
 TITLE: LANDSCAPE BUFFER EASEMENTS
 DATE: 2.13.07



Legend
 N/F NOW OR FORMERLY
 E/CN EXISTING COUNTY
 P.B. PLAT BOOK
 P.C. PLAT CORNER
 R/W RIGHT-OF-WAY
 (MADS) NORTH AMERICAN DATUM 1983



Plat Showing
 Access Easement and Landscape
 Buffer Easements Across Property of
 Henry S. Oakley
 York County, Virginia
 DATE: 10/2/06
 SCALE: 1"=40'
 SHEET 1 OF 1
 DRAWN BY: RWP
 CHECKED BY: JWS
 PROJECT No.: 007608
 FILE No.: 007608-001



- General Notes**
- THIS PLAT IS INTENDED TO REPRESENT AN ACCESS EASEMENT AND LANDSCAPE BUFFER BEING CONVEYED TO YORK COUNTY ACROSS THE PROPERTY OF HENRY S. OAKLEY LOCATED IN YORK COUNTY, VIRGINIA AND IS BASED ON A CURRENT FIELD SURVEY.
 - MEMORANDUM: VIRGINIA STATE PLANE COORDINATE SYSTEM - SOUTH ZONE (NAD 83)
 - VARIABLE WIDTH ACCESS EASEMENT INCLUDES 10' LANDSCAPE BUFFER EASEMENTS
 - AREA OF ACCESS EASEMENT: 20,190 SQUARE FEET OR 0.4631 ACRE
 AREA OF LANDSCAPE BUFFER EASEMENTS: 6,838 SQUARE FEET OR 0.157 ACRE

State Of Virginia
 County Of York
 IN THE CLERK'S OFFICE OF THE COUNTY OF YORK-COURSON,
 THIS _____ DAY OF _____ 2006, THIS MAP WAS PRESENTED AND ADMITTED
 TO RECORD AS THE LAW ENACTS AS INSTRUMENT NUMBER _____

TESTE: _____
 CLERK